

## Product Description

The PBI is a riser box designed for use within apartment blocks and mid/high rise office blocks. The unit houses up to three splice trays and up to 16 SC/LC type pigtails and adapters. Each splice tray can accommodate 12 fibre splices. An in-line cable entry port enables the box to be installed onto an in-line riser cable and up to 16 drop ports are available for drop cables of up to 5mm in diameter.

### DESIGN & CONSTRUCTION

- Allows splicing from in line or butt cables to customer drop cables.
- Suitable for two butt or one inline cable of up to 15mm in diameter.
- In line cables enter the unit on the left-hand side.
- 16 drop cables (OD 5 mm) can be spliced. Drop cables exit the unit from the bottom face.
- The drop cable entries are suitable for cables or tubes from 2.5 to 5 mm in diameter.
- Up to 16 pre-connectorized drop cables can be accommodated using SC/LC type connectors.
- Up to 12 fusion splices can be accommodated into each of the splice trays.
- Can accommodate optical splitters. Contact Prysmian for further details.
- Cable management ensures a 20mm minimum bend radius.
- Easily installed and fitted to the wall or inside a riser.
- Suitable for internal use only and manufactured from UL94-V0 rated material.
- Input and output cables are retained using cable ties.

### Kit Contents

- The PBI is supplied with a base, cover, up to 3 splice trays, 16 SC/LC adapters and 16 SC/LC pigtails, cable ties for fixing the in-line cable and wall fixings.

\*check Part Numbers table

- Note Splice protectors and cable ties to secure the drop cables are not supplied and must be ordered separately.

### Additional Items

- Cable Ties (fixing drop cables).
- Splice Protectors.
- Mini Connector Cleaners.

Technical Data

• No of Splice Trays: Up to 3		Logistics	
• Max capacity (fibres)	36	• Packing Dimensions (mm):	
• Max diameter of in line cable:	15mm	Bubble Bag:	(h) 230
• Max no. of Connectorized Drops:	16 (LC)		(w) 150
• Drop Cable Connector Type:	SC/LC		(d) 75
• Max number of drop cables:	16 (LC)	Box:	(h) 735
• Max diameter of drop cables:	5mm		(w) 229
• Required space envelope (mm):	(h) 210 x (w) 130 x (d)60		(d) 171
• Operating temperature:	-20oC to + 60oC (5 to 95% RH)	• Packed Weight (kg):	
• Material:	FR ABS	Bubble bag (contains 1 pc):	0.45
• Colour:	White RAL 9016	Box (contains 10 pcs):	5.20
• Flammability rating:	UL94-V0	• Net weight (kg):	0.40

Part Numbers

Part Number	Adapters Supplied	Pigtails Supplied	Max. Capacity	Number of Splice Trays
XCPSC03167	8 SC/APC	0	16	1
XCPSC03168	8 SC/APC	0	16	3
XCPSC03169	8 SC/APC	8	16	1
XCPSC03170	8 SC/APC	8	16	3
XCPSC03638	8 LC/APC	0	16	3
XCPSC04850	8 LC/UPC	8	16	3
XCPSC05381	0	0	16	2
XCPSC05442	16 SC/APC	16	16	2

Additional Items

Cable Ties

Cable ties are used for securing drop cables into the box. The cable ties are 100mm in length and 2.5mm wide.

**Prysmian Part No. – XKTSC00370 (Bag of 100)**



Heat Shrink Splice Protectors

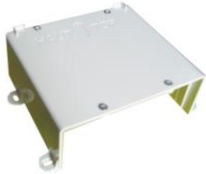
Splice protectors are used to protect the fibre splice. They are 2.4mm in diameter and 45mm in length.



**Prysmian Part No. – XKTSC00050 (pack of 12)**  
**– XPESC00031 (pack of 50)**

Wall Support

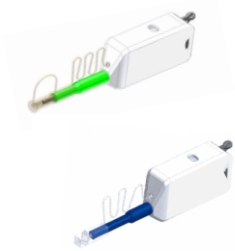
An optional kit to mount the PBI to the wall. The wall support enables fixing of the PBI onto a plate allowing cables to pass underneath. The kit contains the fixings necessary to mount the PBI.



**Prysmian Part No. – XCPSC02088**

Mini Connector Cleaners

Mini connector cleaners have a one-action cleaning system with over 500 times of cleaning units. They are effective for various contaminants (for full details please refer to datasheet AC058).



**Prysmian Part No. – XKTSC01735 (SC/ST/FC Mini Connector Cleaner)**  
**– XKTSC01736 (MU/LC Mini Connector Cleaner)**