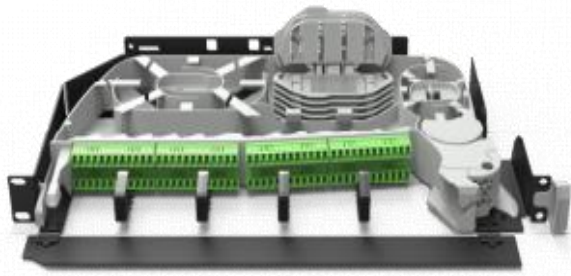


SRS4000 DISTRIBUTION SUB-RACK – 144F LC®



Product Design

Product code – see page 3



DESIGN & CONSTRUCTION

- Modular system for installation into 19" / ETSI / ANSI racks, street-side cabinets and wall mounted cabinets.
- The 144f sub-rack is supplied fully configured with 600µm pigtails / LC adapters
- Chassis are available in 1U, 2U and 3U options are supplied front mounted as standard. Rear mounting brackets are available as an option.
- Fibers are actively managed to minimum bend diameters throughout the Splicing and Patching, Patching only or Splicing only Modules.
- Splicing and bare fiber excess storage is performed inside a tray protected by a cover to prevent any accidental damage when open & closing the shelves.
- Modules pivot outwards for easy access.
- Cables are completely protected from entry to exit of the panel.
- Wall mount 19" and ETSI cabinets are also available. Please contact Prysmian for further details.
- Modules has a drop-down front for easier patch cord routing, enclosing patch-cords, and protecting adapters.

PRODUCT DESCRIPTION

The SRS4000 Distribution Sub-Rack 144f is a modular sub-rack available for integration into 19" / ETSI / ANSI racks, street-side cabinets or wall mounted cabinets. The product consists of a metal chassis available in 1U, 2U and 3U into a which a choice of modules are loaded. The 144f module is available as Splice and Patch only. Other panels and accessories are available, please refer too RM038 for details.

NOTE: SRS4000 sub-racks do not fit into an existing RS3000 rack.

SRS4000 DISTRIBUTION SUB-RACK – 144F LC [®]



Technical data

- Max number of splices:

- 1U: 144 (LC)
- 2U: 288 (LC)
- 3U: 432 (LC)

Note: Splice trays are compatible with 1.3mm splice protectors only

- Max number of output patch cords:

- 1U: 144 with 1.2mm diameter patch cords
- 2U: 288 With 1.2mm diameter patch cords
- 3U: 432 with 1.2mm diameter patch cords

NOTE: All 144F sub-racks are only compatible with 1.2mm patch cords and cannot be mixed with other diameter patch cords. If using the 144f sub-rack in an existing rack, ensure only 1.2mm patch cords are used to patch too the 144f sub-rack. See page X for patch cord part numbers.

- Max Cable Diameter (mm): 14

Input cables enter the 144f panel via bend limiting tubes, 24f per tube.

- Required space envelope (mm):

- 1U: (w) 480 x (d) 245 x (h) 44.5
- 2U (w) 480 x (d) 245 x (h) 89.0
- 3U (w) 480 x (d) 245 x (h) 133.5

- Operating temperature: -20oC to + 60oC (5 to 93% RH)

- Material:-

- Metalwork: Mild Steel
- Plastics: Acrylonitrile butadiene styrene
- Finish:-
- Metalwork: Painted Black
- Plastics: Light Grey RAL 7035

- Testing:-

- Optical: Tested at 1310nm,1550nm and 1625nm
- Dry heat: BS EN 60068-2-2 Test Bb
- Damp heat: IEC 60068-2-3: 1969
- Change of temperature: IEC 60068-2-14: 1984
- Vibration: IEC 60068-2-6: 1995
- Shock: IEC 60068-2-27: 1987

Logistics

- Packing Dimensions (mm):-

- 1U: (w) 525 (d) 330 (h) 80
- 2U: (w) 525 (d) 330 (h) 240
- 3U: (w) 525 (d) 330 (h) 240

- Packed Weight (kg):-

- 1U: 3.0
- 2U: 4.6
- 3U: 5.8

- Net Weight (kg):-

- 1U: 2.7
- 2U: 3.8
- 3U: 5.0

Pigtail and Splitter Technical Data

Pigtails are supplied with either LC/UPC or LC/APC connectors.

Pigtails for the 144F shelf are 600micron. Max stripping length 500mm.

For technical data on the pigtails supplied refer to Prysmian data sheet AC003.

For splitter technical data refer to Prysmian data sheet AC005.

Please see the standard color sequence of the SRS4000. For any questions, please refer to help line desk.

1	2	3	4	5	6	7	8	9	10	11	12
BLUE	ORANGE	GREEN	RED	YELLOW	GREY	BROWN	VIOLET	BLACK	WHITE	PINK	TURQ

SRS4000 DISTRIBUTION SUB-RACK – 144F LC[®]



Main characteristics

Ordering information

The SRS 4000 Sub rack system is supplied with either splice and patch, or patch only modules pre-fitted. To order the item required refer to the part number section on page 3.

Kit Contents

The SRS 4000 Sub rack system is supplied with modules, 1, 2 or 3 ARS cable anchor kit brackets (depending on whether 1U, 2U or 3U) and a rack fixing kit.

Additional Items - Required

- Splice Protectors
- Patch cords (see datasheet AC004)

Additional Items - Optional

- ETSI Conversion Brackets
- ARS Cable Anchor (additional)
- BEM Cable Anchor

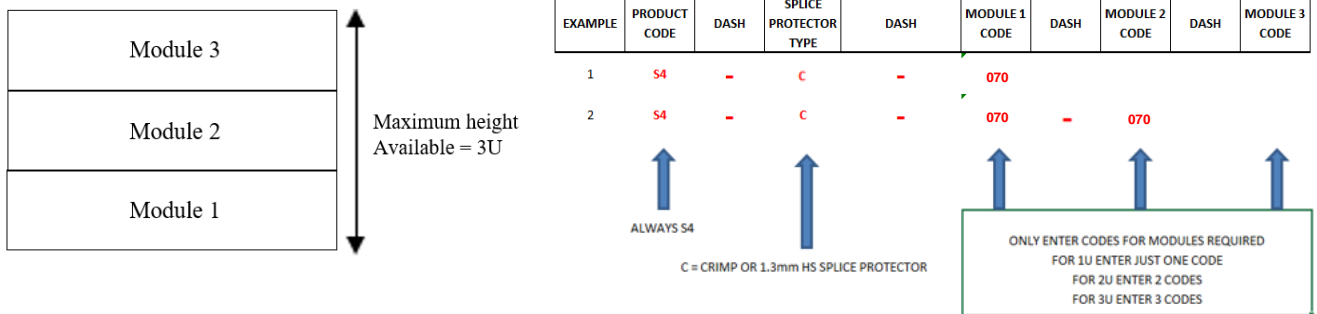
Part Numbers

The SRS4000 Sub-Rack 144f is supplied with the modules pre-fitted by Prysmian.

Part numbers are built up using a coding system where first the size of the chassis is selected from 1U, 2U and 3U. Next the splice protector type is selected with a choice from crimp or 1.3mm splice protectors. Then the bottom module is selected from the tables on the following pages.

For 2U and 3U Sub-Racks the modules for positions 2 and 3 are selected in the same way.

Refer to RM038 for all other SRS4000 sub-rack options.



Connector type	Fiber type	Adapter type	No of Fibers	Code
LC/APC	S/mode	12 way	144	070
LC/UPC	S/mode	12 way	144	071

For all other SRS4000 panel part numbers – please refer too datasheet RM038 – SRS4000 distribution Sub-rack.

1.2 mm patch cords

1.2mm patch cords are the only compatible patch cords with the 144F SRS4000 panel. The patch cords come with terminations both ends and are yellow in colour.

- Prysmian Part No.
- XPPSC04155 Pack of 10 (LCA-LCA)
 - XPPSC04156 Pack of 100 (LCA-LCA)
 - XPPSC04158 Pack of 10 (LCU-LCU)
 - XPPSC04159 Pack of 100 (LCU-LCU)



SRS4000 DISTRIBUTION SUB-RACK – 144F LC[®]

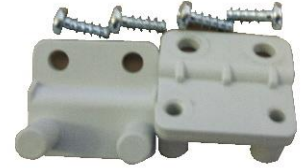


Additional Items

ETSI Conversion Brackets

ETSI Conversion Brackets enable the SRS4000 sub-racks to be installed into an ETSI rack. They are secured to the unit using four fixing screws. For a 1U shelf one set of brackets is required. For a 2U or 3U shelf two sets of brackets are required.

Prysmian Part No. – XKTSC00171 Grey



Rear Mounting Bracket

The Rear Mounting Bracket is used to install an SRS4000 shelf into a rear mounted rack. The bracket simply bolts to the back of the SRS shelf and provides fixing holes for securing to a rear mounted 19" rack. For a 2U or 3U shelf, two brackets are required.

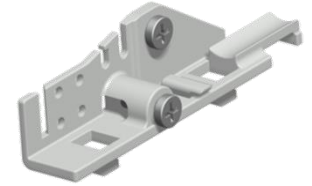
Prysmian Part No. – XSRSC00361



SRS – ARS Cable Anchor

The ARS Cable Anchor kit is used to install an additional cable into an SRS4000 shelf. The kit enables a single cable to be anchored and for the fibres to be distributed onto the shelf. The ARS is suitable for cables between 12 and 48 fibres. Bend limiting routing tubes to protect the fibres being routed to the shelf are also supplied in the kit. The ARS also allows for the anchoring / termination of both the cable strength member and any Aramid within the cable construction.

Prysmian Part No. – XSRSC00360



BEM Cable Clamp

The BEM Cable Clamp is used to anchor the cable within the rack or to an SRS4000 Mounting Chassis and route the fibres onto the Modules. The BEM is suitable for cables between 36 and 192 fibres. 20 metres of routing tube is supplied with the BEM.

Prysmian Part No. - XEXSC00960 – BEM + 20m of bend limiting tube



Blown Fibre Manifold

The Blown Fibre Manifold is used to take up to 6 blown fibre tubes of 5mm in diameter onto one SRS3000 module. The manifold fits onto the back of the SRS4000 chassis and is supplied with a protective cover.

Prysmian Part No. – XKTSC00257



Heat shrink Splice Protector

Splice protectors are used to protect the fibre splice. They are 1.3mm in diameter and 30mm in length.

Prysmian Part No. - XKTSC01284 (pack of 12)
- XKTSC00057 (pack of 50)



© PRYSMIAN 2024, All Rights Reserved

All sizes and values without tolerances are reference values. Specifications are for product as supplied by Prysmian: any modification or alteration afterwards of product may give different result.

The information contained within this document must not be copied, reprinted or reproduced in any form, either wholly or in part, without the written consent of Prysmian. The information is believed to be correct at the time of issue. Prysmian reserves the right to amend this specification without prior notice. This specification is not contractually valid unless specifically authorised by Prysmian.