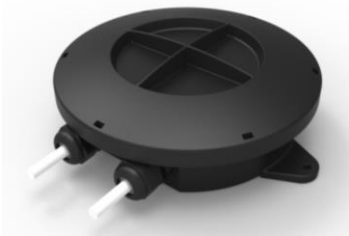


Prysmian Part Numbers: See below



DESIGN & CONSTRUCTION

- A compact closure for track and branch applications.
- Closure has four knock out ports.
- Each port accommodates a cable gland for cables 5- 9mm or 6-12mm.
- Closure is supplied with two glands. Additional glands are available separately. See additional items.
- Contains a single splice tray for up to 24 splices.
- Splice tray accommodates 2.2mm splice protectors.
- Cable management plate to secure cables and route fibres.
- Robust construction enabling direct buried applications.
- Can be used underground or can be mounted to a wall.
- Sealed to IP68 at 5m and UV resistant to ISO 4892.
- Gland available for double entry – 8 entries in total for 4-6mm cables.

Product description

The SJC Closure is a splice closure that is used for track or branch applications. It has 4 cable entry ports, a splice cassette for 24 splices and a cable management and storage area. The closure is sealed to IP68 for water and dust tightness. The closure is supplied with four knock-out ports and two entry glands. Up to two additional entry glands can be ordered separately.

For installation instructions please scan the QR Code



Technical data

• Number of cable ports:	4 ports, 2 on each side
• Maximum capacity each port:	Cables or micro ducts: 5-9 mm or 6-12mm
• Number of splice cassettes:	1
• Maximum splice capacity:	24
• Minimum fibre bending radius:	20 mm (fibre types ITU-T G.657 A1 and A2)
• Splice protector type:	Heat shrink 45mm x 2.2 mm
• Dimensions:	(l) 200 x (w) 170 x (d) 66 mm
• Colour:	Black
• Material:	Polypropylene housing and ABS inner parts
• UV resistance:	Resistant to ISO 4892 – 1000 hours
• Temperature range:	
Transport and storage	-30°C to +60°C
Installation	-10°C to +50°C
Operation	-25°C to +60°C
• Cable retention:	80 N
• Impact resistance:	10 Nm @ 20 °C, radius 100 mm
• Static load:	1000 N @ 20 °C on top surface of the box according to EN 50411-2-3
• Water immersion:	IP68 (No water ingress at 1.5meter water pressure for 20 days)
• Application area:	Group 1 according to EN 124, placed minimum 25 cm below surface level Group 2 according to EN 124, placed minimum 30 cm below stone or concrete pavement

Logistics

• Packing Dimensions (mm):	205 (l) x 175 (w) x 70 (d)	(No. per euro pallet = 220 at 98Kg total weight)
• Packed Weight (kg):	0.40	
• Net Weight (kg):	0.39	

Main characteristics

Kits Contents

The SJC is supplied with: -

- 01 x Base
- 01 x Cover
- 01 x O Seal
- 01 x Splice Tray
- 01 x Cable Management Plate
- 02 x Cable Entry Kits

Additional Items

- Splice Protectors
- Cable Entry Glands

Part Numbers

XJTSC02335 – with 2 cable entries for cable 5-9mm.
XJTSC02470 – with 2 cable entries for cables 6-12mm
XJTSC02773 – with 2 cable entries 3 way for cables 2.5-4mm

Additional items

Cable Entry Kit

The cable entry kit is used to install an additional cable into the joint. It contains a cable gland, a cable tie and foam tape.

Part Number	Cable diameter	Qty
XJTSC02336	5-9 mm	1
XJTSC02471	6-12 mm	1
XJTSC02542	4-6mm (2 entries)	1
XJTSC02774	2.5-4mm (3 entries)	1

Splice protectors

Splice protectors are used to protect the fibre splice. They are 2.2mm in diameter and 45mm in length.

Part Number

XKTSC00050 (Pack of 12)