

BEP 16, 24 (BEP12 box + 12FO extension box)

This procedure will showcase two main products configurations.

1. Equipped with Pigtails -
BEP (16) PN XCPSC05260
BEP (24) PN XCPSC05261

*24f Pigtails will be shown in the IP, for 16
the steps will remain the same.

2. Equipped with preterminated cable.
BEP (16) precon Flex Drop ADSS 30m PN XCPSC05277
BEP (16) precon Flex Drop ADSS 40m PN XCPSC05278
BEP (16) precon Flex Drop ADSS 50m PN XCPSC05279
BEP (24) precon Flex Drop ADSS 30m PN XCPSC05280
BEP (24) precon Flex Drop ADSS 40m PN XCPSC05281
BEP (24) precon Flex Drop ADSS 50m PN XCPSC05282

*24f precon will be shown in the IP, for 16
the steps will remain the same.




Precautions and Warnings

- ! This guide is only valid for products purchased from or approved by Prysmian.
- ! During this procedure all local Health & Safety statutory regulations must be adhered to.
- ! This installation should only be carried out by suitably trained competent persons.

Tools Required

Key	T20 Tool	Drill	Marker	Level	Screwdriver
					

Contents of Kits

Extension box up 12fo PN	Oval port kit	Accessory of BEP with precon cable	Inline port kit	Entry kit with fixings
	*	 <p>1 x 6mm Seal 1 x Protective Gromet 1 x Wall Mounting Kit 1 x Key 1 x T20 Tool</p>	 <p>2 x Inline Ports 2 x Inline Port Seals B 1 x Branch Metal Part 1 1 x Branch Metal Part 2</p>	 <p>1 x Connection Part 1 x 6mm Seal 1 x 12.5mm Seal 1 x Protective Gromet 2 x Connection Tubes 12 x Splice Protectors 1 x Wall Mounting Kit 1 x Key 1 x T20 Tool</p>

Packaging (inner cardboard box per product + outer cardboard box for 10 products).

**Wall Mounting - BEP 16, 24
(BEP12 box + 12FO extension box) - Pigtails**

Step 1



Mark on the wall using a marker, the locations of the mounting positions.

**Wall Mounting - BEP 16, 24
(BEP12 box + 12FO extension box) - Pigtails**

Step 2



Drill holes in the wall.

**Wall Mounting - BEP 16, 24
(BEP12 box + 12FO extension box) - Pigtails**

Step 3



Mount the products using the screws and ensure both products are level.

**Cable Installation - BEP 16, 24
(BEP12 box + 12FO extension box) - Pigtails**

Step 1



Open the boxes using the key.

**Cable Installation - BEP 16, 24
(BEP12 box + 12FO extension box) - Pigtails**

Step 2



Ensure both are open.

**Cable Installation - BEP 16, 24
(BEP12 box + 12FO extension box) - Pigtails**

Step 3



Unscrew tray area to gain access to the gland.

**Cable Installation - BEP 16, 24
(BEP12 box + 12FO extension box) - Pigtails**

Step 4



Unclick the circular gland.

**Cable Installation - BEP 16, 24
(BEP12 box + 12FO extension box) - Pigtails**

Step 5



Unscrew the cable gland and separate the halves.

**Cable Installation - BEP 16, 24
(BEP12 box + 12FO extension box) - Pigtails**

Step 6



After unscrewing the halves, unscrew the gland body.

**Cable Installation - BEP 16, 24
(BEP12 box + 12FO extension box) - Pigtails**

Step 7



Pop out the rubber grommet.

**Cable Installation - BEP 16, 24
(BEP12 box + 12FO extension box) - Pigtails**

Step 8



The grommet with the smaller hole is for cables that are 6mm. Medium grommet size is 8mm, whilst the large grommet is for cables of 12.5mm. After selecting the correct grommet, depending on the cable diameter, use scissors to cut the end open.

**Cable Installation - BEP 16, 24
(BEP12 box + 12FO extension box) - Pigtails**

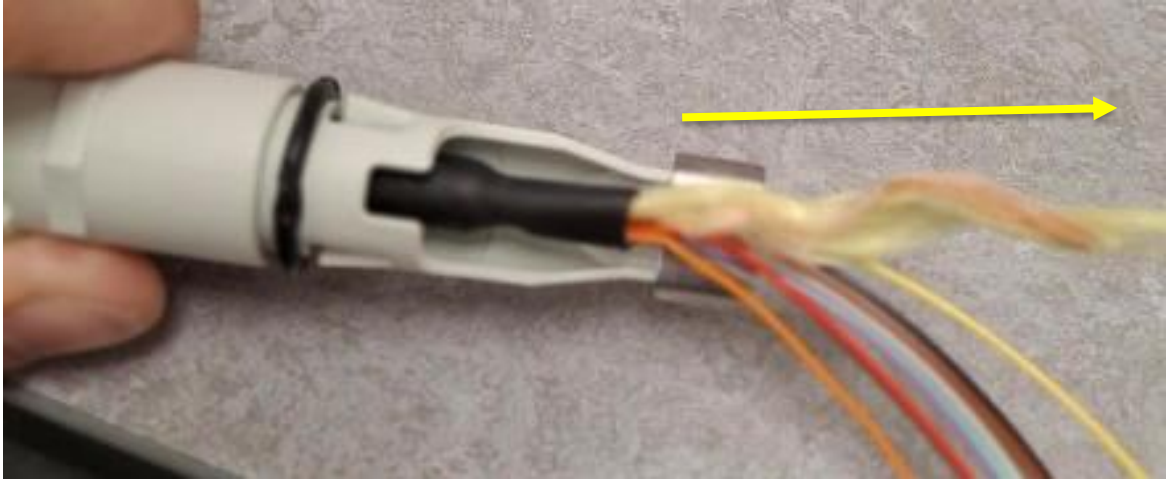
Step 9



Slide the gland parts over the cable.

**Cable Installation - BEP 16, 24
(BEP12 box + 12FO extension box) - Pigtails**

Step 10



After sliding the gland back over the cable, measure out 50mm of Kevlar to use when coiling the cable.

**Cable Installation - BEP 16, 24
(BEP12 box + 12FO extension box) - Pigtails**

Step 11



Coil the Kevlar underneath the retention bracket, go around 3 times before tightening.

**Cable Installation - BEP 16, 24
(BEP12 box + 12FO extension box) - Pigtails**

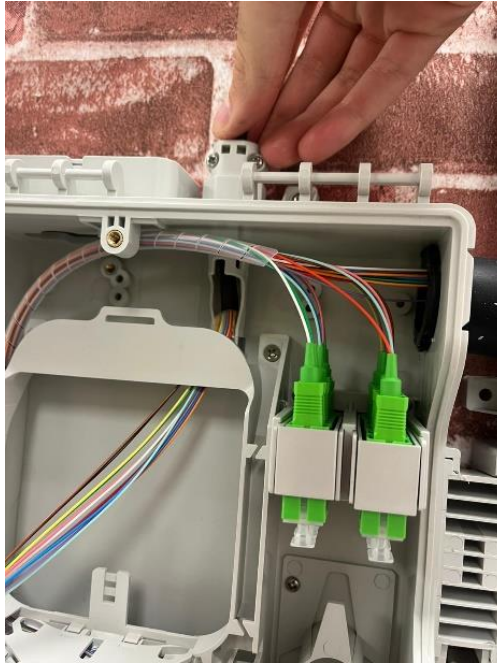
Step 12



Secure the 2 plates back together and clip the gland back into the BEP.

Drop Cable Installation - BEP 16, 24 (BEP12 box + 12FO extension box) - Pigtails

Step 1



After clicking the gland back into position, route the elements down behind the trays.

**Drop Cable Installation - BEP 16, 24
(BEP12 box + 12FO extension box) - Pigtails**

Step 2



Coil the elements going clockwise.

**Drop Cable Installation - BEP 16, 24
(BEP12 box + 12FO extension box) - Pigtails**

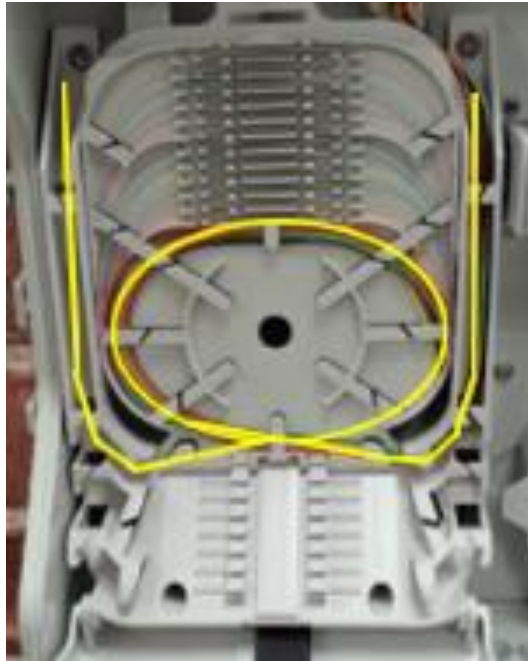
Step 3



Bring the incoming cable elements into the routing area, ensure that the elements are stripped after the point highlighted.

**Drop Cable Installation - BEP 16, 24
(BEP12 box + 12FO extension box) - Pigtails**

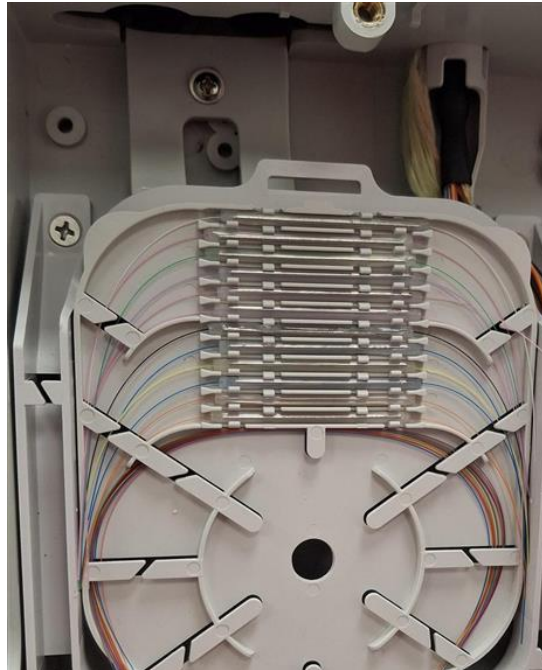
Step 4



Follow the routing diagram.

**Drop Cable Installation - BEP 16, 24
(BEP12 box + 12FO extension box) - Pigtails**

Step 5



Splice the incoming cable to the existing pigtails, using your company's preferred method. Place the splices in the tray positions as shown.

**Drop Cable Installation - BEP 16, 24
(BEP12 box + 12FO extension box) - Pigtails**

Step 6



Place the splice tray cover back on to the tray, wrap the velcro around and lock the splice area up.

**Drop Cable Installation - BEP 16, 24
(BEP12 box + 12FO extension box) - Pigtails**

Step 1



Push through the rubber grommet through. Then bring through the drop cable.

**Drop Cable Installation - BEP 16, 24
(BEP12 box + 12FO extension box) - Pigtails**

Step 2



Then unclip the rubber from the plastic housing & open the plastic. The arrows show where the clips are to open it.

**Drop Cable Installation - BEP 16, 24
(BEP12 box + 12FO extension box) - Pigtails**

Step 3



Click the drop cable in the required position.

**Drop Cable Installation - BEP 16, 24
(BEP12 box + 12FO extension box) - Pigtails**

Step 4



Place the rubber grommet and plastic housing around the drop cable. Click it shut.

**Drop Cable Installation - BEP 16, 24
(BEP12 box + 12FO extension box) - Pigtails**

Step 5



It should look like this. Close the lid and screw back together.

**Drop Cable Installation - BEP 16, 24
(BEP12 box + 12FO extension box) - Pigtails**

Step 6



Close the lids of both boxes and screw them shut.

**Wall Mounting - BEP 16, 24 (BEP12 box + 12FO extension box)
- Preterminated Cable**

Step 1



Mark on the wall using a marker, the locations of the mounting positions.

**Wall Mounting - BEP 16, 24 (BEP12 box + 12FO extension box)
- Preterminated Cable**

Step 2



Drill holes in the wall.

**Wall Mounting - BEP 16, 24 (BEP12 box + 12FO extension box)
- Preterminated Cable**

Step 3



Mount the products using the screws & ensure both products are level.

**Drop Cable Installation - BEP 16, 24
(BEP12 box + 12FO extension box)
- Preterminated Cable**

Step 1



Push through the rubber grommet through. Then bring in the drop cable.

**Drop Cable Installation - BEP 16, 24
(BEP12 box + 12FO extension box)
- Preterminated Cable**

Step 2



Then unclip the rubber from the plastic housing & open the plastic. The arrows show where the clips are to open it.

**Drop Cable Installation - BEP 16, 24
(BEP12 box + 12FO extension box)
- Preterminated Cable**

Step 3



Click the drop cable in the required position.

**Drop Cable Installation - BEP 16, 24
(BEP12 box + 12FO extension box)
- Preterminated Cable**

Step 4



Place the rubber grommet and plastic housing around the drop cable. Click it shut.

**Drop Cable Installation - BEP 16, 24
(BEP12 box + 12FO extension box)
- Preterminated Cable**

Step 5



It should look like this. Close the lid and screw back together.

**Drop Cable Installation - BEP 16, 24
(BEP12 box + 12FO extension box)
- Preterminated Cable**

Step 6



Close the lids of both boxes and screw them shut.

Installation of the Corrugated Gland

Step 1



Knock out the insert as shown.

Installation of the Corrugated Gland

Step 2



It should look like this, a clean cut with no sharp edges.

Installation of the Corrugated Gland

Step 3



Place the corrugated gland into the hole.

Installation of the Corrugated Gland

Step 4



Feed the tube through the corrugated gland.

Installation of the Corrugated Gland

Step 5



Place the gland into the BEP and attach the nut on the back of the corrugated tube.

Installation of the Corrugated Gland

Step 6



It should look like this when completed.

Installation of the Inline Cable Seal

Step 1



Before starting the process, measure the diameter of the cable that will be installed. This will then decide which segment to cut away.

Installation of the Inline Cable Seal

Step 2



Use scissors to cut the required area.

Installation of the Inline Cable Seal

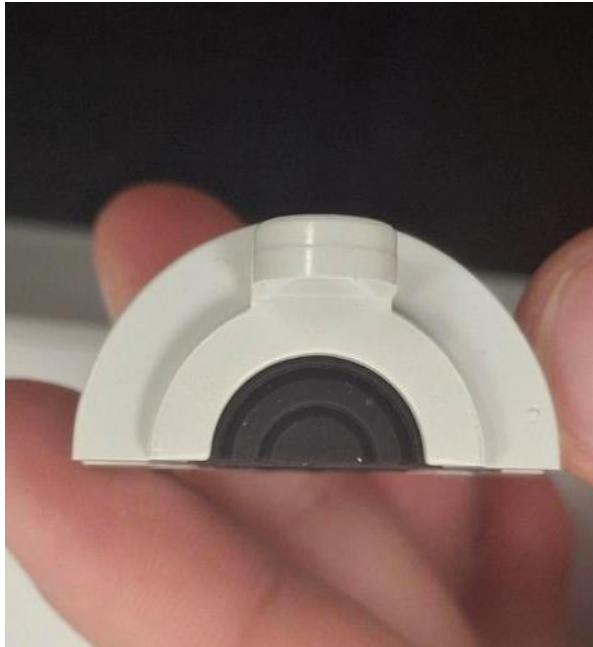
Step 3



Then pull off the tab to leave a clean surface.

Installation of the Inline Cable Seal

Step 4



Repeat the steps.

Installation of the Inline Cable Seal

Step 5



Use scissors to cut the required area.

Installation of the Inline Cable Seal

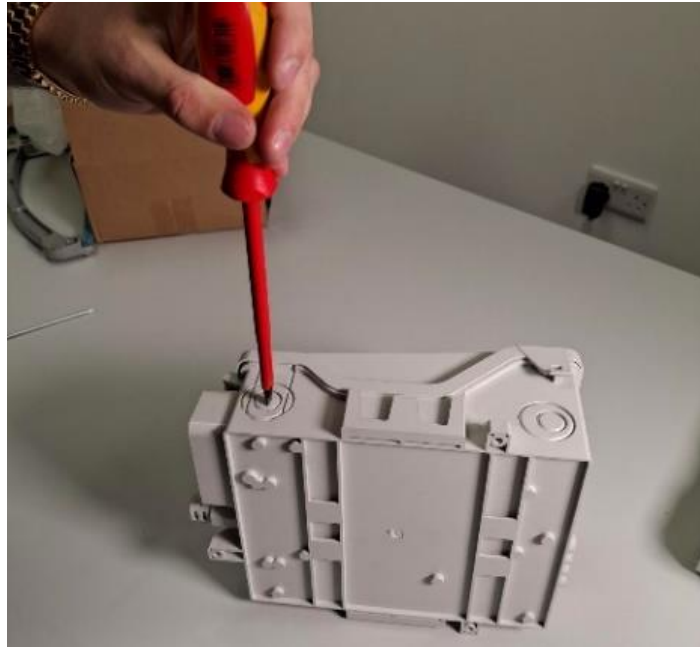
Step 6



Then pull off the tab to leave a clean surface.

Installation of the Inline Cable Seal

Step 7



When tapping out the knockout for the inline cable seal, it is important to be accurate. Use a flat head screwdriver for this.

Installation of the Inline Cable Seal

Step 8



Unscrew the tray cover to access the required area.

Installation of the Inline Cable Seal

Step 9



Use a saw for the hole, ensure no sharp edges or grooves remain as it needs to be accurate.

Installation of the Inline Cable Seal

Step 10



Slide the bottom half of the inline cable seal into position.

Installation of the Inline Cable Seal

Step 11



Secure the cable restraint bracket using the screws supplied in the kit.

Installation of the Inline Cable Seal

Step 12



Secure the bottom half of the inline cable seal to the BEP, using the screw provided in the kit.

Installation of the Inline Cable Seal

Step 13



Highlighted is what it should look like.

Installation of the Inline Cable Seal

Step 14



Slide the other half of the inline seal over.

Installation of the Inline Cable Seal

Step 15



Slide the other half of the inline seal in place.

Installation of the Inline Cable Seal

Step 16



After bringing the cable through the inline seal, anchor it in place by using a cable tie. Use the kevlar from the cable and wrap it around the anchor bracket 3 times.

Installation of the Inline Cable Seal

Step 17



When shut, the lid compresses the seal to the cable.

Contact information

	Office	Telephone/Fax	Email
ASEAN	Singapore	T : +65 6898 3633 T : +65 6265 0707	sales.asean@prysmian.com
AUSTRALIA	Liverpool	T: 1300 300 304 F : 1300 300 307	sales.telecom.au@prysmian.com
CHINA	Wuxi	T : +86 510 68069518 F: +86 510 68069559	tls.china@prysmian.com
DANUBIAN	Slatina	T : +40-349-406.628 F : +40-349-433.484	customercare.romania@prysmian.com
FRANCE	Champs-Sur-Marne	T : +33 1 69 67 72 80	telecom.fr@prysmian.com
ITALIA	Milano	T: +3964493939 F: +3964499264	pqa@prysmian.com
LATAM	Sorocaba	T: +55 15 3212 6801 F: +55 15 3212 6814	sales.telecom.br@prysmian.com
MIDDLE EAST	Dubai	T : +971 4 368 8682 F : +971 4 368 8683	dubaioffice@prysmiancables-me.com
NORDICS	Malmö	T : +46 380 554 265	info.nordic@prysmian.com
NORTH AMERICA	Lexington	T : 800 669 0808	comm.cables@prysmian.com
OPGW & SPECIALS	Vilanova	T: +34 93 811 6181 F: + 34 93 811 6031	opgw@prysmian.com
RUSSIA	Moscow	T: +7 495 777 80 86 F: +7 495 777 80 89	info.ru@prysmian.com
SPAIN & AFRICA	Maliña	T: +34 942247118 F: +34 942247114	santander.bo@prysmian.com
TURKEY	Istanbul		tpks@prysmian.com
UK	Eastleigh	T: +44 2380 295 000	sales.telecom.uk@prysmian.com

Copyright Prysmian - 2025 You may not copy, reprint, or reproduce in any form the content, either wholly or in part, of this Installation Guide, without the written permission of the copyright owner. Specifications are for product as supplied by Prysmian: any modification or alteration afterwards of product may give different result. The information is believed to be correct at the time of issue. Prysmian reserves the right to amend the information within this Installation Guide without prior notice. This Installation Guide may include inaccuracies, omissions of content and of information and is not contractually valid unless specifically authorised by Prysmian. Property of Prysmian UK - Uncontrolled when printed Prysmian Cables & Systems Limited, Chickenhall Lane, Eastleigh,

PRYSMIAN HELPLINE: + 44 (0) 7816191633
connectivity.helpline@prysmian.com