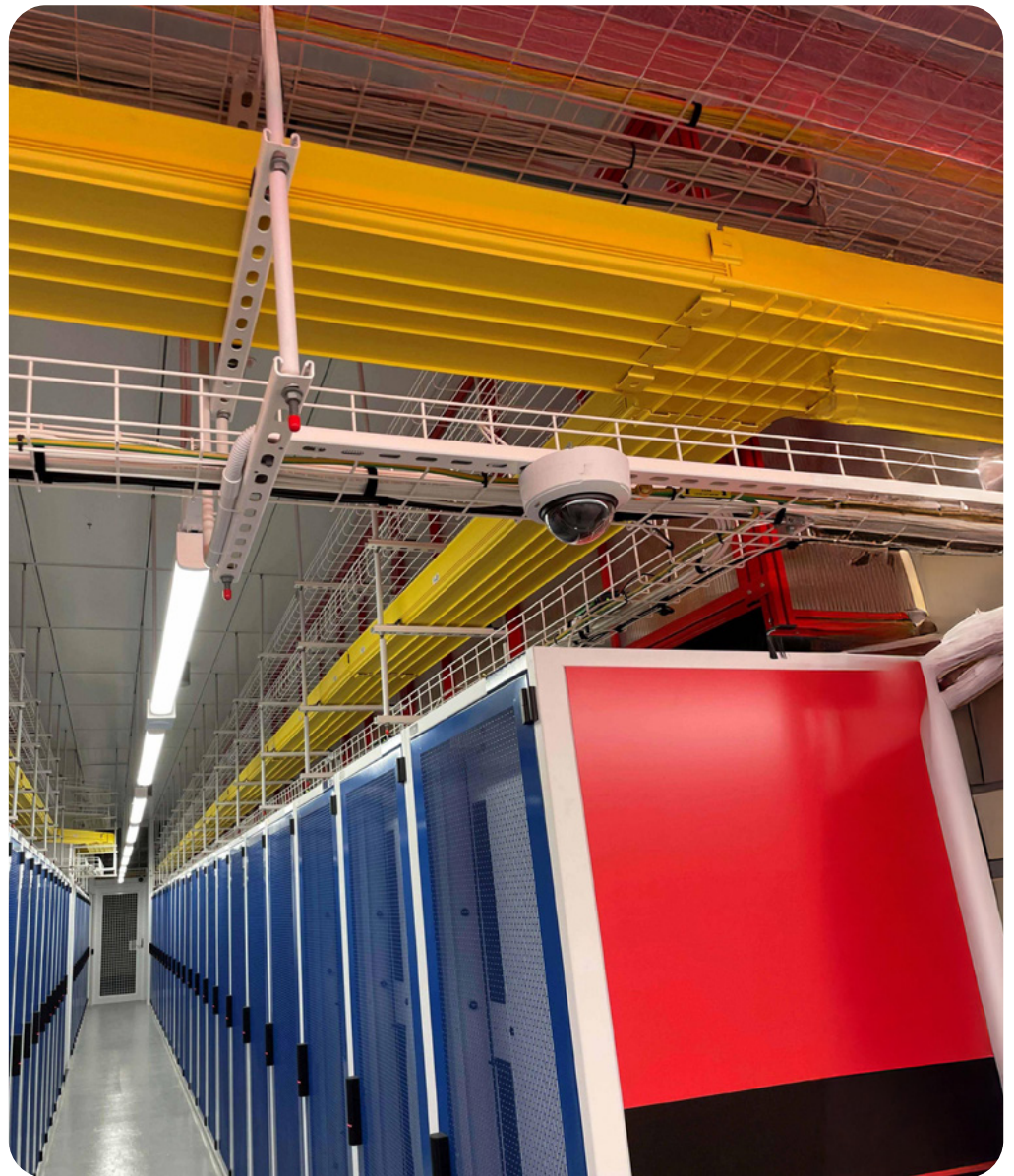


OPTICAL FIBRE DUCTING - RACEWAY

Solutions, Products and Accessories



ACCELERATING GROWTH

As a leader in optical fibre solutions, Prysmian is powering industries and connecting communities across the world.

We're committed to leading the energy transition and driving digital transformation by harnessing our knowledge, innovation and reach. We're connecting people and businesses across the world with the energy and information they need, and always working towards a more sustainable way of living to ensure a positive impact on the planet.

To power the change, we're joining forces with Warren and Brown Technologies: global experts in fibre and copper communications equipment. Together, we're pioneering new possibilities for digitalisation, accelerating connectivity everywhere and opening up opportunities for industries internationally with cutting-edge cable solutions that support the circular economy worldwide.

Together, we can navigate the way forward.



Contents

| | |
|--------------------------|----|
| Straight duct | 11 |
| Joiners | 12 |
| Tees, Elbows and Crosses | 13 |
| Breakouts | 15 |
| Retainer clips | 17 |
| Express outlets | 17 |
| Drop-off solutions | 18 |
| Reducers | 20 |
| Fibre storage loops | 21 |
| End caps | 22 |
| Tubing | 23 |
| Adaptors | 24 |
| Mounting Solutions | 25 |
| Tooling Components | 28 |
| Prysmian part numbers | 32 |

THE ULTIMATE FIBRE OPTIC DUCTING RACEWAY SYSTEM BY PRYSMIAN

Optical fibre patch cords are crucial for transmitting vast amounts of critical data in communications networks.

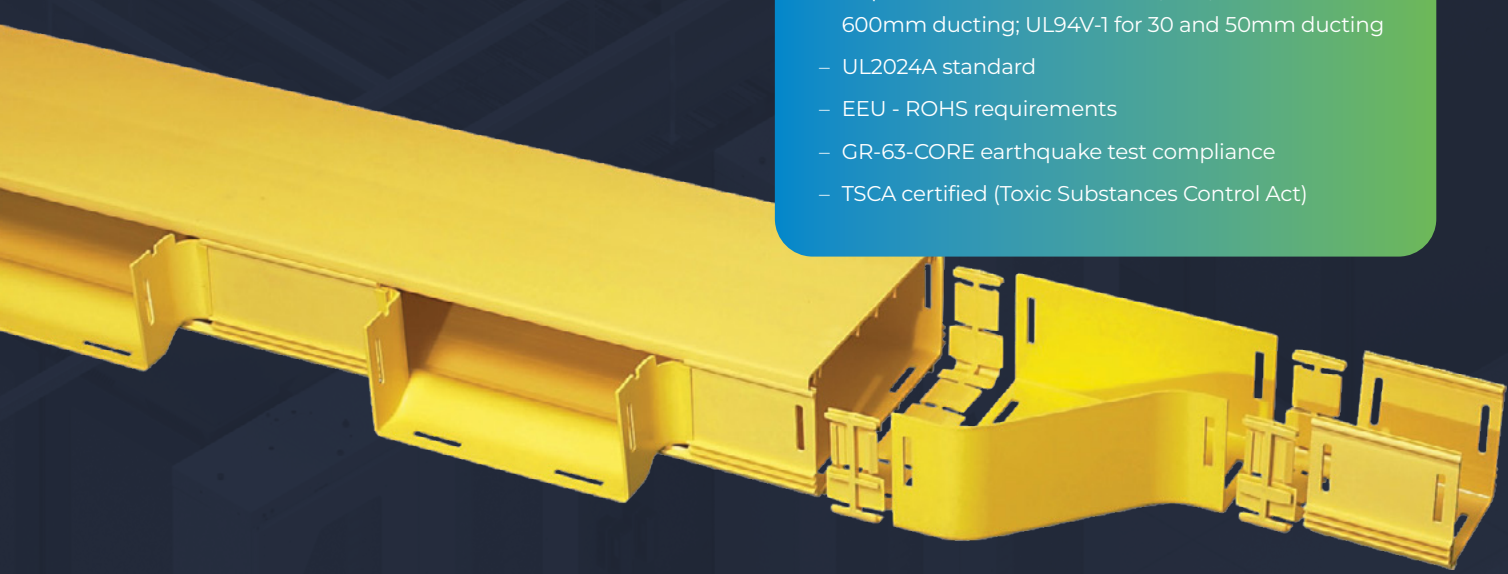
To maintain network reliability, these delicate cables – ranging from 1.6mm to 3mm in diameter – must be safeguarded from heavy electrical and copper data cabling. Traditional routing methods, such as cable trays and baskets, can damage fibre cords and compromise bend radii, leading to costly network downtime. An optical fibre ducting raceway, like Fibre Raceway, prevents these issues and ensures the safety and integrity of your network.

Prysmian's Fibre Raceway system stands out with its pre-slotted, fully recyclable components and unique slotless joiners that require no additional tools for installation. This innovative design simplifies deployment while providing precise protection and management for fibre optic cables. Combining cutting-edge technology with unparalleled functionality, Fibre Raceway enhances both sustainability and infrastructure efficiency.

Our dual joiner options are a key differentiator in the industry. Each component is pre-slotted for effortless assembly and exceptional precision, offering a level of innovation and convenience that sets Prysmian apart from competitors.

Prysmian Ducting Raceway items conform to the following standards and requirements:

- LSZH Low Smoke Zero Halogen
- ISO 9001 Certified Quality Management System by BSI
- Halogen free and fire-retardent plastic requirements: UL94V-0 for 100, 200, 300 and 600mm ducting; UL94V-1 for 30 and 50mm ducting
- UL2024A standard
- EEU - ROHS requirements
- GR-63-CORE earthquake test compliance
- TSCA certified (Toxic Substances Control Act)



WHICH DUCTING RACEWAY SUITS YOUR NEEDS?

The ducting system is available in yellow or black on request and comes in six sizes, with options for either solid or slotted walls to accommodate fibre exits.

Selecting the appropriate size is crucial to allow for future expansion and additions. Our latest addition, the 600mm x 100mm ducting raceway system, offers maximum capacity, accommodating up to 7,500 2mm patch cords at a 50% fill rate. The raceway system is fully customisable, ensuring it can be tailored to meet the specific needs of your facility.

The capacities listed below are based on half-full duct capacity (50%) and are recommended to ensure no damage occurs to the cords due to crushing. This is not the total number of optical fibre cords that can be accommodated if completely filled.

With over 400 individual components and mounting hardware readily available in local stock and at selected locations globally, our product range is constantly expanding. Proudly made in Australia, thanks to Prysmian's global warehouse facilities, we ensure quick order turnaround times – days, not months.

Our future-proof ducting raceway solution is backed by dedicated R&D teams, advanced network-design capabilities, and ongoing product support and training. Prysmian also offers a comprehensive suite of services, complimentary design and layout services, bill of material (BOM) creation, site visits, and expert technical guidance.

Capacities

Based on 2mmØ cord

| DUCT SIZE | 50MM X 50 2" X 2" | 100MM X 50 4" X 2" | 100MM X 100 4" X 4" | 220MM X 100 8" X 4" | 300MM X 100 12" X 4" | 600MM X 100 24" X 4" |
|---------------------------------|----------------------|-----------------------|------------------------|------------------------|-------------------------|-------------------------|
| Straight ducting raceway | 280 | 560 | 1110 | 2450 | 3340 | 6680 |
| Ducting raceway with ramp-off | | | 670 | 1470 | | |
| Vertical tee - straight through | | | 1110 | 980 | | |
| Vertical tee downspout - drop | | | 1110 | 110 | | |
| Over the top outlet | | | 670 | | | |

| CONVOLUTED TUBING | SPLIT 20MM DIA. | 38MM DIA. | 50MM DIA. | 75MM DIA. | 50MM X 50 SQUARE |
|-----------------------|-----------------|-----------|-----------|-----------|------------------|
| Optical cable size/mm | 2 | 2 | 2 | 2 | 2 |
| Tubing capacity | 22 | 125 | 220 | 360 | 280 |

Note: Calculations are based on half-full duct capacity - 50%

PLANNING AND DESIGNING A LAYOUT AND INSTALLATION

Prysmian is here to assist you in the planning and design of a ducting layout / installation.

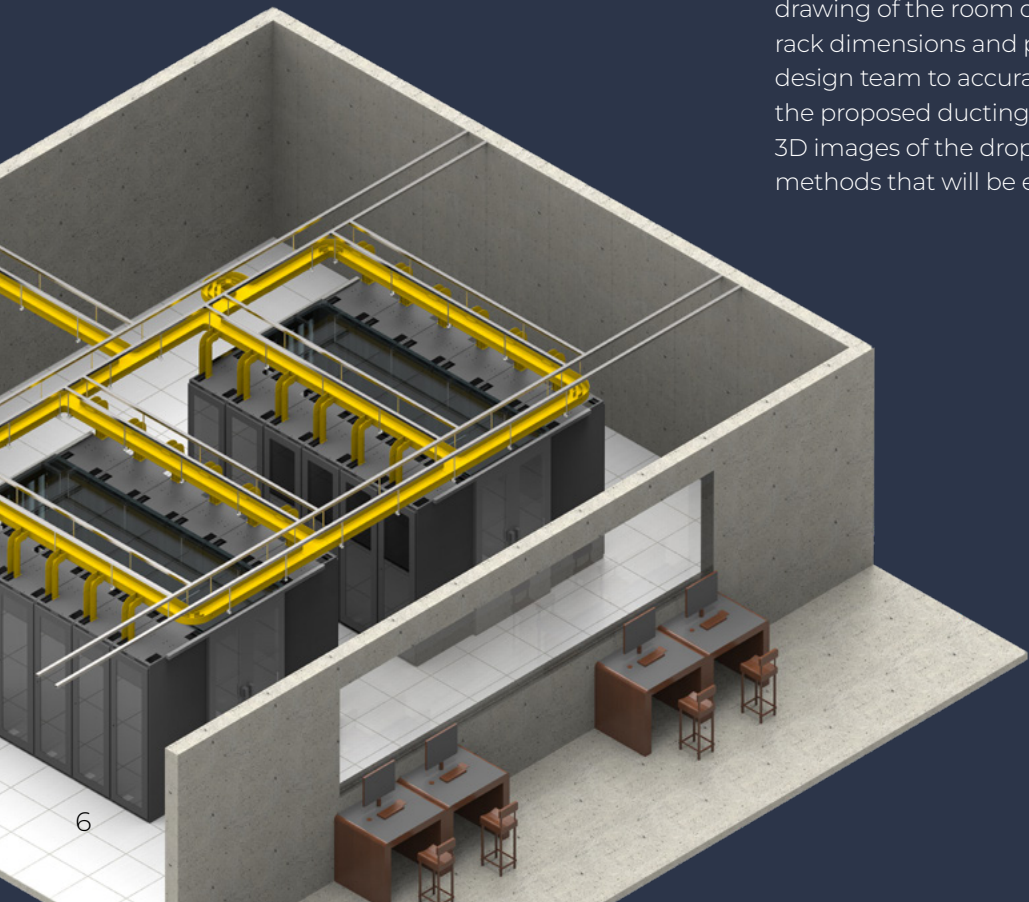
Typically, we are able to produce a detailed layout drawing and complete BOM to complete the task at hand. Below are some examples of how we help you design and build a ducting layout that works for your current operations but has the potential for future expansion.

We encourage you to plan ahead when considering your installation in order to avoid complex retrofitting of ducting to existing 'live' ducting infrastructure. To assist you, we will ask for additional information to ascertain the correct items required, ensuring you achieve your desired results.

Some of these questions are listed below:

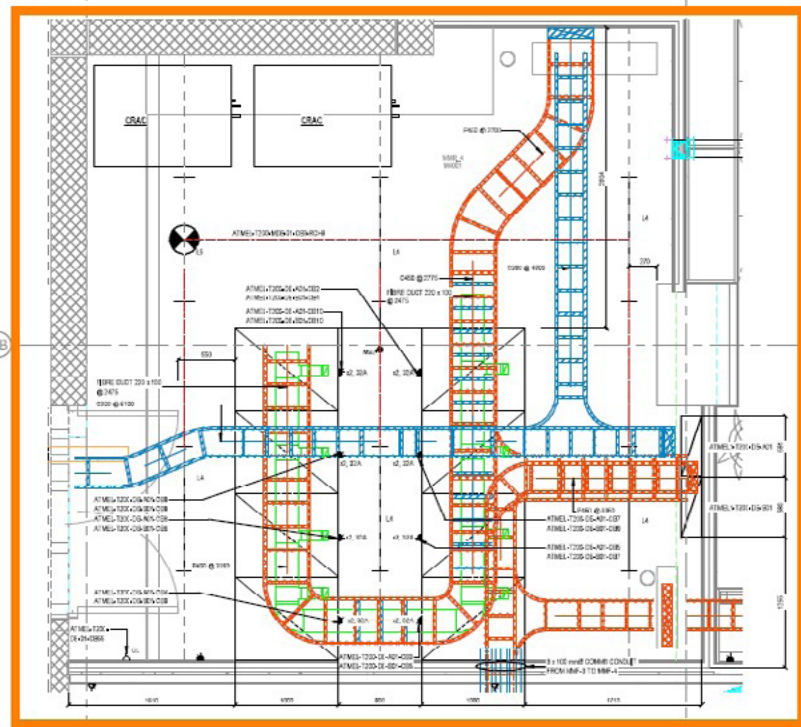
- Duct size? A larger duct may be more suitable for the backbone and to meet future needs.
- Drop-off type? Are tubes required? Do you need to run duct to rack entry points? How many fibres are expected for each drop off?
- Mounting methods? From ladder rack? Steel superstructure? Rack top or underfloor?
- Ducting colour: yellow or black?
- Do you require duct to have covers?
- Have you identified high-traffic areas? Will the location of the HDODF require a larger duct?
- Is fibre storage a requirement within the layout?

The following pages show some basic examples of smaller installations. The customer will usually provide a drawing of the room or office showing, where possible, rack dimensions and positions etc. This allows our design team to accurately redraw the space and show the proposed ducting in position. We can also create 3D images of the drop outs and suggested mounting methods that will be employed.



EXAMPLE 1

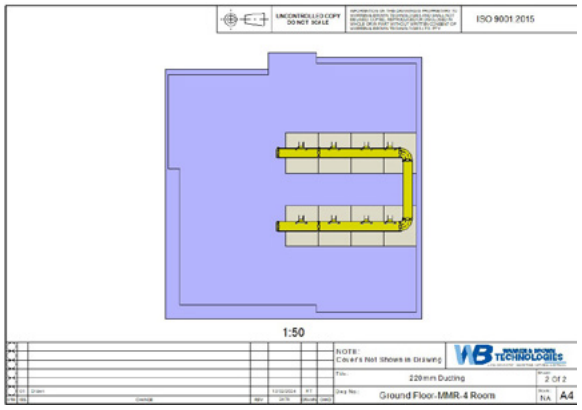
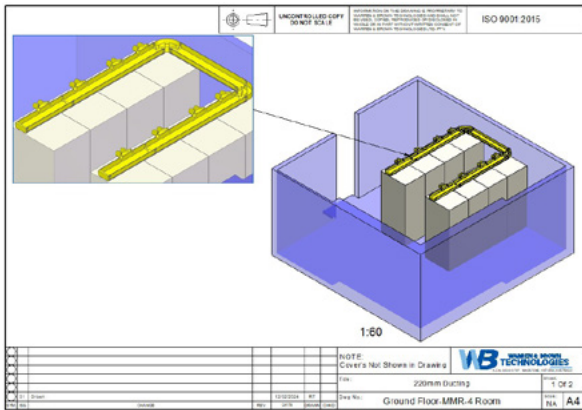
1 Customer-supplied drawing



2 Prysmian will produce an initial drawing / layout for comment



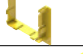

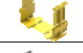
3 Customer provides feedback and any modifications are made as required

4 Prysmian creates a final drawing
Below is an example of what we can produce



5 A bill of materials is produced

Example output shown below

| PART DESCRIPTION | PART NO | TOTAL QTY | PRODUCT IMAGE |
|---|-----------------|-----------|---|
| 1 220mm x 100mm Duct and Snap-On Lid | TC1279-21ASN(M) | 18 |  |
| 2 220mm x 100mm Horizontal Tee and Lid (220mm x 220mm) | TC1279-01A | 5 |  |
| 3 220mm x 100mm Horizontal Elbow and Lid 90° | TC1279-29A | 5 |  |
| 4 220mm x 100mm Vertical Tee and Lid (100mm x 100mm Drop) | TC1279-11A | 4 |  |
| 5 220mm x 100mm Storage Loop and Lid (Inline) | TC1279-207KIT | 2 |  |
| 6 220mm x 100mm Joiner | TC1279-25 | 40 |  |
| 7 220mm x 100mm Endcap | TC1279-56 | 1 |  |
| 8 Side Drop-Off to 100mm x 100mm Ducting - Raceway | TC1279-111KIT | 12 |  |
| 9 100mm x 100mm Endcap (End Support Bracket) | TC1279-57D | 12 |  |
| 10 100mm x 100mm Duct and Snap-On Lid | TC1279-23ASN(M) | 4 |  |
| 11 100mm x 100mm Joiner | TC1279-27 | 15 |  |
| 12 Suspension Bracket Mounting Kit Suits 220mm Ducting | TC1279-106KIT | 38 |  |

As you can see, a plan view, 3D view and BOM are produced

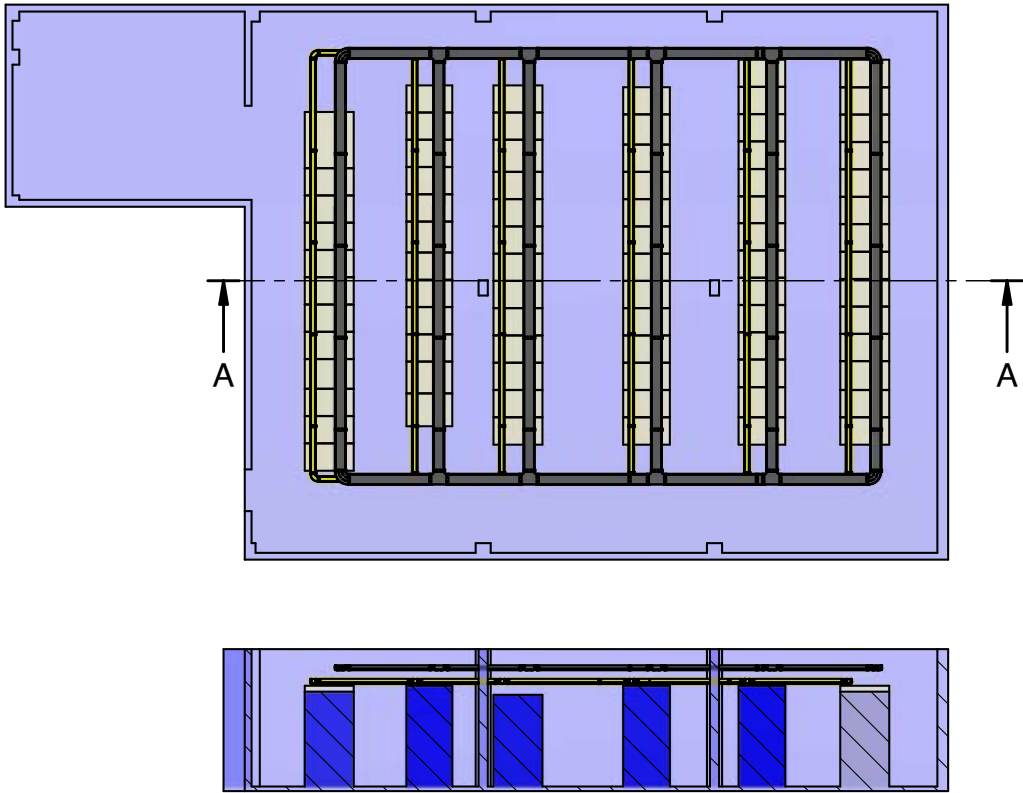
EXAMPLE 2

Prysmian can also assist with the design of much larger projects, producing detailed drawings to ensure the end user understands the complete installation. An example of a larger-scale project is shown below.

1 Customer-supplied drawing



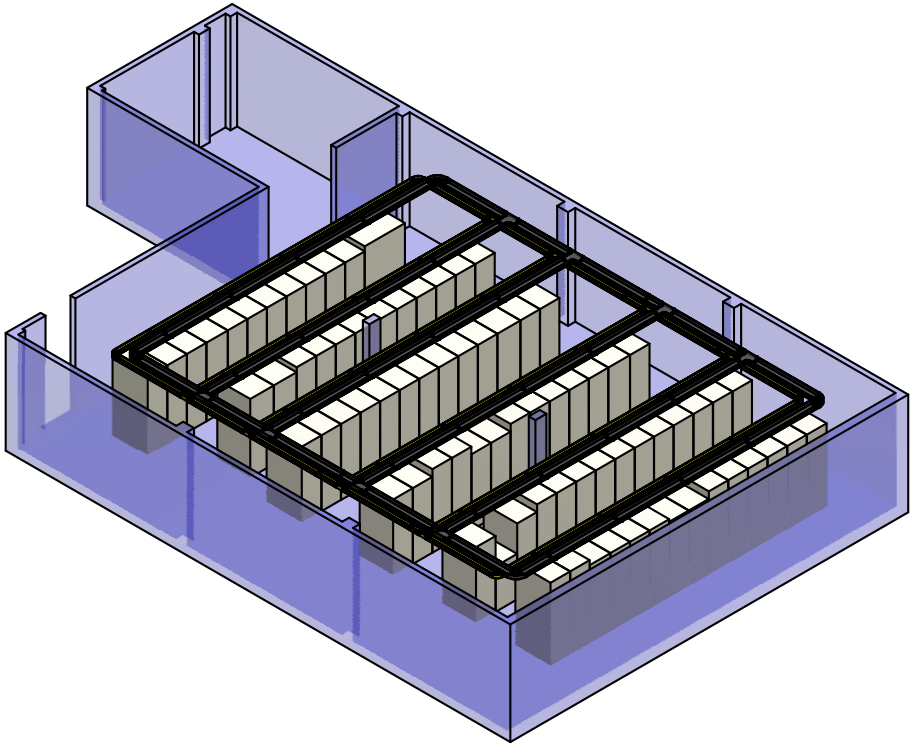
2 Prysmian will produce an initial drawing / layout for comment



3 Customer provides feedback and any modifications are made as required

4 Prysmian creates a final drawing

Below is an example of what we can produce



| PART DESCRIPTION | | PART NO | TOTAL QTY | PRODUCT IMAGE |
|------------------|--|----------------|-----------|---|
| 1 | 220mm x 100mm Duct and Snap-On Lid | TC1279-21ASNB | 38 |  |
| 2 | 220mm x 100mm Horizontal Tee and Lid (220mm x 220mm) | TC1279-01AB | 8 |  |
| 3 | 220mm x 100mm Horizontal Elbow and Lid 90° | TC1279-29AB | 4 |  |
| 4 | 220mm x 100mm Joiner | TC1279-25B | 65 |  |
| 5 | Express Top Outlet Drop-Off to 100mm x 100mm Ducting - Raceway, Vertical (Slots) | TC1279-307ASLB | 77 |  |
| 6 | 100mm 88mm Tube Outlet | TC1279-456B | 77 |  |
| 7 | Convolutud Tube Flexible, 75mm ID / 88mm OD x (2 metre length) | TC1279-458B | 16 |  |
| 8 | Suspension Bracket Mounting Kit Suits 220mm Ducting | TC1279-106KIT | 76 |  |
| 9 | 100mm x 100mm Duct and Snap-On Lid | TC1279-23ASN | 40 |  |
| 10 | 100mm x 100mm Horizontal Tee and Lid (100mm x 100mm) | TC1279-03A | 8 |  |
| 11 | 100mm x 100mm Horizontal Elbow and Lid 90° | TC1279-31A | 4 |  |
| 12 | 100mm x 100mm Joiner | TC1279-27 | 65 |  |
| 13 | Express Top Outlet Drop-Off to 50mm x 50mm Ducting - Raceway, Vertical (Slots) | TC1279-531ASL | 77 |  |
| 14 | 50mm x 50mm Endcap (Tube Outlet for 44mm Tube) | TC1279-127D | 77 |  |
| 15 | Convolutud Tube Æ50mm (2 metre length) (YELLOW) | TC1279-53Y | 4 |  |
| 16 | Suspension Bracket Mounting Kit Suits 100mm Ducting | TC1279-107KIT | 80 |  |

As you can see, a plan view, 3D view and BOM are produced

STRAIGHT DUCT

Prysmian straight-duct lengths are available in six sizes and can come with or without covers. Slotted duct / raceway is available in some sizes for vertical drops or applications inside equipment racks to allow cords to exit through the side of the duct. Some sizes are available with hinged covers (hinges included in pack) or clip-on covers.

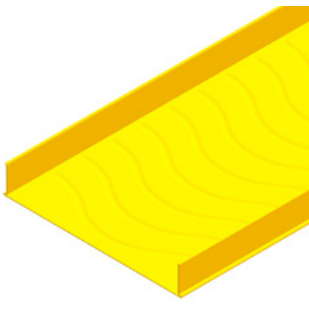
All duct sizes come in 2m (6' 7") lengths, and are slotted at each end for simple snapping together with an appropriate joiner. Most other ducting raceway brands are only available in 6 foot lengths – 10% shorter than Prysmian's Fibre Raceway.



TC1279-23



TC1279-275



TC1279-406



TC1279-21

| SIZE (MM) SIZE (INCHES) | 50MM X 50 2" X 2" | 100MM X 50 4" X 2" | 100MM X 100 4" X 4" | 220MM X 100 8" X 4" | 300MM X 100 12" X 4" | 600MM X 100 24" X 4" |
|-------------------------------|----------------------|-----------------------|------------------------|------------------------|-------------------------|-------------------------|
| Solid duct | TC1279-81 | TC1279-223 | TC1279-23 | TC1279-21 | TC1279-275 | TC1279-406 |
| Solid duct and cover | TC1279-81XA | TC1279-223ASN | TC1279-23ASN(M) | TC1279-21ASN(M) | TC1279-275A(M) | TC1279-406A |
| Solid duct and hinged cover | TC1279-81A | TC1279-223A | TC1279-23A | TC1279-21A | N/A | N/A |
| Slotted duct (side exit) | TC1279-81SL | TC1279-223SL | TC1279-23SL | N/A | N/A | N/A |
| Slotted duct and cover | TC1279-81SLXA | TC1279-223SLASN | TC1279-23SLASN | N/A | N/A | N/A |
| Slotted duct and hinged cover | TC1279-81SLA | TC1279-223SLXA | TC1279-23SLA | N/A | N/A | N/A |

JOINERS

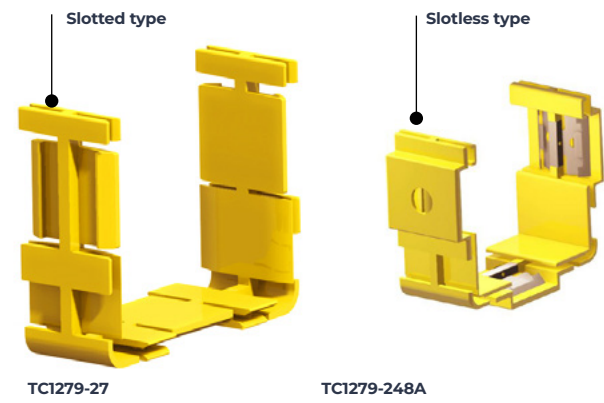
Prysmian Fibre Raceway slotted joiners are used to snap together system components and straight ducting raceway. They snap easily into the slots in the end of each piece to be joined.

Alternatively, “slotless” joiners are available in sizes from 100mm x 50mm upwards and will join the ducting raceway components with or without joining slots.

Note: For a straight-ducting raceway that has been cut to length, new slots need to be made with a suitable size slotting tool when using slotted joiners.

All components (tees, elbows etc) come preslotted to aid speedy installation.

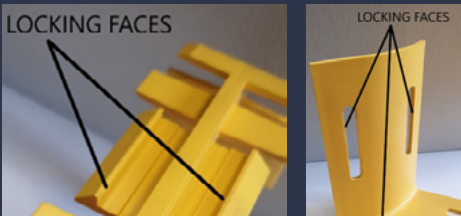
Note: You only need to add slots to duct lengths that have been shortened



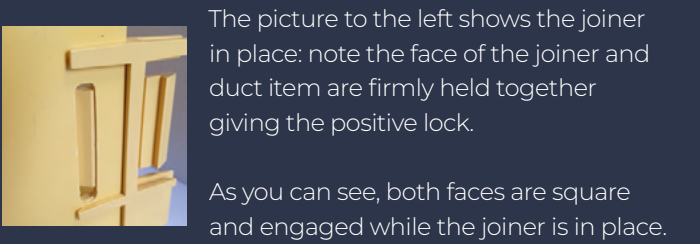
| SIZE (MM) SIZE (INCHES) | 50MM X 50 2" X 2" | 100MM X 50 4" X 2" | 100MM X 100 4" X 4" | 220MM X 100 8" X 4" | 300MM X 100 12" X 4" | 600MM X 100 24" X 4" |
|----------------------------|----------------------|-----------------------|------------------------|------------------------|-------------------------|-------------------------|
| Joiners (require slots) | TC1279-73 | TC1279-226 | TC1279-27 | TC1279-25 | TC1279-320 | N/A |
| Slotless joiners | N/A | TC1279-459A | TC1279-248A | TC1279-250A | TC1279-287A | TC1279-410A |

SLOTTED JOINERS EXPLAINED

The Prysmian Joiner is a unique product that works on the simple principle of two faces locking together. The more load that is applied to the matching faces, the more effectively they work. Below are pictures of the joiner and the so the sentence reads: “and the lower section duct item showing the matching positive-locking faces.



Note: a minimum of three positive locks are used on each joiner to ensure positive connection on sidewalls and lower section of duct lengths and components.



The picture to the left shows the joiner in place: note the face of the joiner and duct item are firmly held together giving the positive lock. As you can see, both faces are square and engaged while the joiner is in place. It is also worth noting that the joiner is easily removed by inserting a simple flat-blade screwdriver behind the joiner edge and twisting the joiner face-out of the component slot. Joiners can be reused multiple times as neither the joiner or duct components suffer any damage during the installation or removal process.

BENEFITS OF SLOTTED JOINERS

- Strong positive face-to-face locking
- Easy removal with flat-blade screwdriver
- All duct lengths and components are supplied pre slotted, ready to be joined together
- Super-fast installation time
- Re-use joiners multiple times
- Simple easy-to-fit method, just click into place
- Space-saving, slotted joiners are slimline not bulky like slotless or competitor joiners

TEES, ELBOWS AND CROSSES

Horizontal tees

Prysmian Fibre Raceway horizontal tees may be used to branch off the main route or provide a method of breaking into horizontal duct. They are available with or without covers.

Specialised tee piece



Note: Horizontal tees can also be used as a means of drop off.

| SIZE (MM) SIZE (INCHES) | 50MM X 50 2" X 2" | 100MM X 50 4" X 2" | 100MM X 100 4" X 4" | 220MM X 100 8" X 4" | 300MM X 100 12" X 4" | 600MM X 100 24" X 4" |
|--|----------------------|---|------------------------|------------------------|-------------------------|-------------------------|
| Horizontal tee | TC1279-75 | TC1279-224 | TC1279-03 | TC1279-01 | TC1279-279 | TC1279-412 |
| Horizontal tee and cover | TC1279-75A | TC1279-224A | TC1279-03A | TC1279-01A | TC1279-279A | TC1279-412A |
| 300mm - 220mm duct horizontal tee and cover | TC1279-316A | 220mm - 100mm duct horizontal tee and cover | | | TC1279-09A | N/A |
| 300mm - 100mm duct horizontal tee and cover | TC1279-398A | 100mm - 220mm duct horizontal tee and cover | | | TC1279-393A | N/A |
| 300mm - 100mm specialized tee with separator/ island | TC1279-398A | 100mm - 220mm duct horizontal tee and cover | | | TC1279-279IT | N/A |

Horizontal elbows

Prysmian Fibre Raceway horizontal elbows are used to change the direction of horizontal routes. They are available with or without covers.

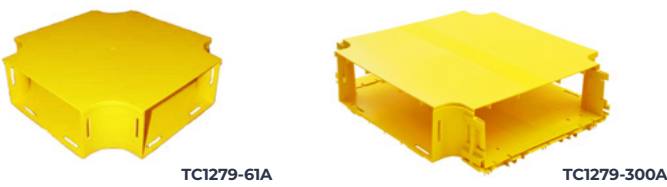


| SIZE (MM) SIZE (INCHES) | 50MM X 50 2" X 2" | 100MM X 50 4" X 2" | 100MM X 100 4" X 4" | 220MM X 100 8" X 4" | 300MM X 100 12" X 4" | 600MM X 100 24" X 4" |
|----------------------------|----------------------|-----------------------|------------------------|------------------------|-------------------------|-------------------------|
| 30° Elbow | TC1279-77-30 | N/A | TC1279-47 | TC1279-45 | N/A | N/A |
| 30° Elbow and cover | TC1279-77-30A | N/A | TC1279-47A | TC1279-45A | N/A | N/A |
| 45° Elbow | TC1279-77-45 | N/A | TC1279-31-45 | TC1279-29-45 | TC1279-304 | TC1279-414 |
| 45° Elbow and cover | TC1279-77-45A | N/A | TC1279-31-45A | TC1279-29-45A | TC1279-304A | TC1279-414A |
| 90° Elbow | TC1279-77 | TC1279-269 | TC1279-31 | TC1279-29 | TC1279-387 | TC1279-411KIT |
| 90° Elbow and cover | TC1279-77A | TC1279-269A | TC1279-31A | TC1279-29A | TC1279-387A | TC1279-411A |

Horizontal crosses

Prysmian Fibre Raceway horizontal crosses can be used to provide a cross intersection in straight duct.

Reduction crosses join horizontal duct of different sizes.



| SIZE (MM) SIZE (INCHES) | 50MM X 50 2" X 2" | 100MM X 50 4" X 2" | 100MM X 100 4" X 4" | 220MM X 100 8" X 4" | 300MM X 100 12" X 4" | 600MM X 100 24" X 4" |
|----------------------------|----------------------------|-----------------------|------------------------|----------------------------|-------------------------|-------------------------|
| Horizontal cross | TC1279-139 | TC1279-234 | TC1279-71 | TC1279-61 | TC1279-300 | TC1279-416 |
| Horizontal cross and cover | TC1279-139A | TC1279-234A | TC1279-71A | TC1279-61A | TC1279-300A | TC1279-416A |
| Reduction cross | 220mm x 100 to 100mm x 100 | | TC1279-65 | 220mm x 100 to 300mm x 100 | | TC1279-331 |
| Reduction cross and cover | 220mm x 100 to 100mm x 100 | | TC1279-65A | 220mm x 100 to 300mm x 100 | | TC1279-331A |
| Reduction cross | 300mm x 100 to 100mm x 100 | | TC1279-396 | | | |
| Reduction cross and cover | 300mm x 100 to 100mm x 100 | | TC1279-396A | | | |

Handy hint

You can use breakouts in place of tees and crosses to achieve the same result (see page 15)

Vertical tees (downspouts) - intrasuite assemblies

Prysmian Fibre Raceway vertical tees can be used to drop cables vertically from horizontal routes into frames or cabinets. Retrofit tees provide open access and are used where cables are already in place. They are available with or without covers.

Note: Can also be used as drop-offs.

| SIZE (MM) SIZE (INCHES) | 50MM X 50 2" X 2" | 100MM X 50 4" X 2" | 100MM X 100 4" X 4" | 220MM X 100 8" X 4" | 300MM X 100 12" X 4" | 600MM X 100 24" X 4" |
|------------------------------|----------------------|-----------------------|------------------------|------------------------|-------------------------|-------------------------|
| 50mm x 50mm drop | TC1279-145 | N/A | N/A | N/A | N/A | N/A |
| 50mm x 50mm drop and cover | TC1279-145A | N/A | N/A | N/A | N/A | N/A |
| 50mm x 50mm drop retro | TC1279-145R | N/A | N/A | N/A | N/A | N/A |
| 100mm x 50mm drop | N/A | TC1279-228 | N/A | N/A | N/A | N/A |
| 100mm x 50mm drop and cover | N/A | TC1279-228A | N/A | N/A | N/A | N/A |
| 100mm x 100mm drop | N/A | N/A | TC1279-63 | TC1279-11 | N/A | N/A |
| 100mm x 100mm drop and cover | N/A | N/A | TC1279-63A | TC1279-11A | N/A | N/A |
| 100mm x 100mm drop retro | N/A | N/A | TC1279-63R | TC1279-11R | N/A | N/A |
| 220mm x 100mm drop | N/A | N/A | N/A | N/A | TC1279-277 | N/A |
| 220mm x 100mm drop and cover | N/A | N/A | N/A | TC1279-329A | TC1279-277A | N/A |

Vertical elbows

Prysmian Fibre Raceway vertical elbows are used to connect horizontal routes at different heights, or to allow the fibre path to be raised or lowered to avoid obstacles. Retrofit versions are used where there is existing fibre. They are available with or without covers.

| SIZE (MM) SIZE (INCHES) | 50MM X 50 2" X 2" | 100MM X 50 4" X 2" | 100MM X 100 4" X 4" | 220MM X 100 8" X 4" | 300MM X 100 12" X 4" | 600MM X 100 24" X 4" |
|----------------------------|----------------------|-----------------------|------------------------|------------------------|-------------------------|-------------------------|
| 30° down | TC1279-87-30 | N/A | TC1279-111-30 | TC1279-123-30 | N/A | N/A |
| 30° down and cover | TC1279-87-30A | N/A | TC1279-111-30A | TC1279-123-30A | N/A | N/A |
| 30° down retrofit | N/A | N/A | TC1279-111-30R | TC1279-123-30R | N/A | N/A |
| 30° up | N/A | N/A | TC1279-113-30 | TC1279-125-30 | N/A | N/A |
| 30° up and cover | N/A | N/A | TC1279-113-30A | TC1279-125-30A | N/A | N/A |
| 30° up retrofit | N/A | N/A | TC1279-113-30R | TC1279-125-30R | N/A | N/A |
| 45° down | TC1279-87-45 | N/A | TC1279-111-45 | TC1279-123-45 | TC1279-285 | N/A |
| 45° down and cover | TC1279-87-45A | N/A | TC1279-111-45A | TC1279-123-45A | TC1279-285A | N/A |
| 45° down retrofit | N/A | N/A | TC1279-111-45R | TC1279-123-45R | N/A | N/A |
| 45° up | TC1279-143-45 | N/A | TC1279-113-45 | TC1279-125-45 | TC1279-283 | N/A |
| 45° up and cover | TC1279-143-45A | N/A | TC1279-113-45A | TC1279-125-45A | TC1279-283A | TC1279-437A |
| 45° up retrofit | TC1279-143-45R | N/A | TC1279-113-45R | TC1279-125-45R | N/A | N/A |
| 90° down | TC1279-87 | TC1279-236 | TC1279-111 | TC1279-123 | TC1279-193 | TC1279-425KIT |
| 90° down and cover | TC1279-87A | TC1279-236A | TC1279-111A | TC1279-123A | TC1279-193A | TC1279-425A |
| 90° down retrofit | TC1279-87R | TC1279-236R | TC1279-111R | TC1279-123R | N/A | N/A |
| 90° up | TC1279-143 | TC1279-246 | TC1279-113 | TC1279-125 | TC1279-298A | TC1279-427KIT |
| 90° up and cover | TC1279-143A | TC1279-246A | TC1279-113A | TC1279-125A | TC1279-298KIT | TC1279-427A |
| 90° up retrofit | TC1279-143R | TC1279-246R | TC1279-113R | TC1279-125R | N/A | N/A |
| 90° up and down enclosed | N/A | N/A | TC1279-39A | TC1279-37A | N/A | N/A |

BREAKOUTS

Trumpet outlet

The breakout assembly is used to provide a safe exit for optical fibre cord/s to equipment at any point in a ducting length. It is normally used to provide a breakout in existing duct systems, and clips straight into a cut-out in the duct wall. When used as described, the breakout assembly provides a curved outlet; to which any standard part can be fitted using a joiner. A lid is supplied.

Note: Tools for producing cut outs are shown on pages 34-35

OUTLET TRUMPET

TC1279-93A 50mm x 50mm
TC1279-218A 100mm x 100mm
TC1279-330A 220mm x 100mm
TC1279-379A 300mm x 100mm



Handy hint
You can reverse this breakout to use it as a trumpet if required

High-capacity duct outlets

These duct outlet kits provide the ideal solution for high-capacity optical fibre cords. Duct outlets can be placed anywhere along the duct and minimal time and effort is required to install these outlet components. This solution allows for quick installation, as fewer cuts are required and it is stronger as the ribs of the duct are not cut.

- Simply clips onto the top of a straight duct length
- Straight duct components ordered separately



TC1279-452A
High capacity outlet, 100mm x 100mm (4" x 4") 90°
- Provides a 90° down bend (and breakout facility) at any point in a 100mm, 220mm or 300mm duct system
- Can accept any standard 100mm x 100mm duct item using a joiner

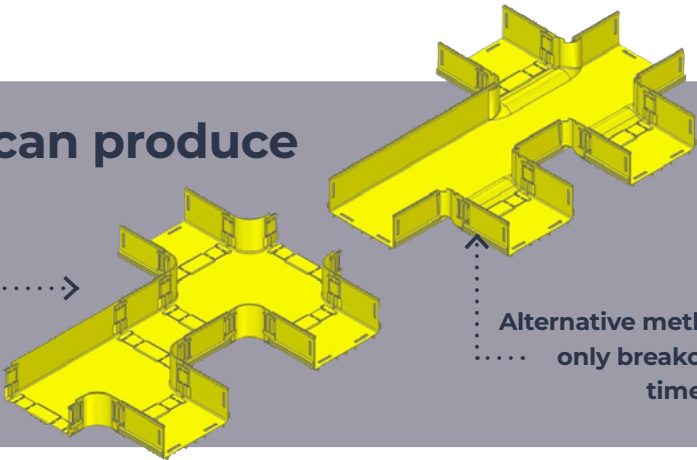
TC1279-454A

High capacity outlet, 220mm x 100mm (8" x 4") 90° Provides a 90° down bend (and breakout facility) at any point in a 100mm, 220mm, 300mm or 600mm duct system
- Can accept any standard 220mm x 100mm duct item using a joiner
- Use template 483A for cut out

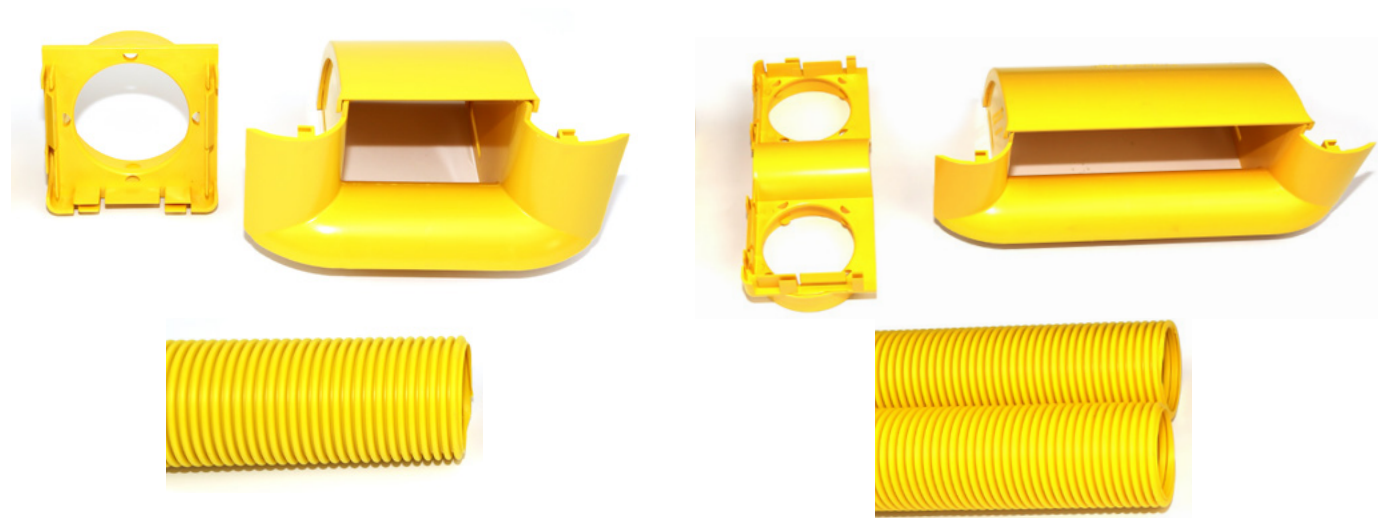


Unique breakouts can produce crosses or tees

Traditional method using a cross or tee



Alternative method using only breakouts saves time and cost



TC1279-452KIT

High-capacity outlet kit, single, 100mm x 100mm (4" x 4") 90°

- Provides a 90° down bend tube in a 100mm, 220mm or 300mm duct system
- The 75mm ID/88 mm OD tube can carry either: 360 x 2mm cords; 210 x 2.4mm cords; or 160 x 3mm dia cords maximum
- Use template 483A for cutout

Kit includes:

- 1x TC1279-452A
- 1 x 2m long convoluted tube TC1279-458
- 1 x TC1279-456 convoluted tube outlet

TC1279-454KIT

High-capacity outlet kit, dual, 220mm x 100mm (8" x 4") 90°

- Provides a 90° down bend for two large-size convoluted tubes in a 100mm, 220mm or 300mm duct system
- Each 75mm ID tube can carry up to 360 x 2mm cords
- Use template 483A for cut out

Kit includes:

- 1x TC1279-454A
- 2 x 2m long convoluted tubes TC1279-458
- 1 x TC1279-457 dual convoluted tube outlet

Side drop-off kits - 100mm x 100mm exit

100mm x 100mm duct drop-off solutions are suitable for 100mm x 50mm, 100mm x 100mm, 220mm x 100mm and 300mm x 100mm straight duct lengths.

- Use tool TC1279-231 to make cut-out in side of duct or template TC1279-483A)
- Straight duct components ordered separately



TC1279-111KIT

Side drop-off to 100mm x 100mm ducting raceway

- This drop can fit between 500-600 x 2mm cables
- Use tool TC1279-231 to make cut-out in side of duct

TC1279-218A

Side drop-off (outlet only) to 100mm x 100mm ducting raceway

- This outlet can fit between 500-600 x 2mm cables
- Use tool TC1279-483A



TC1279-483A

Cut-out jig, for drop-offs and breakout guides - suitable for all ducts from 50mm to 600mm

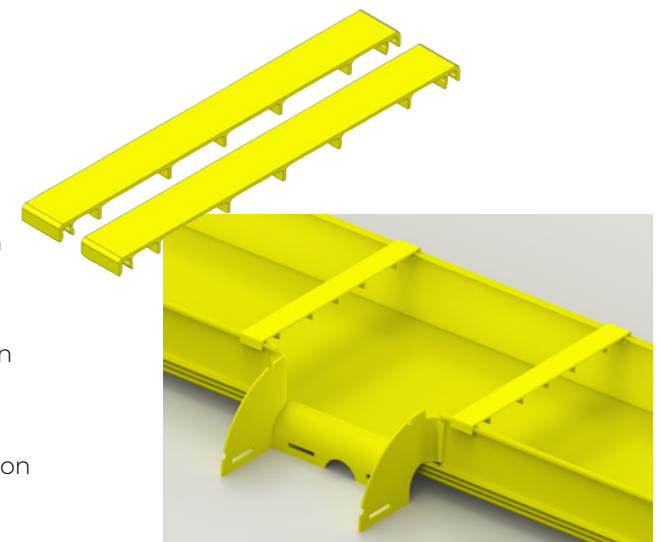


RETAINER CLIPS

These clips provide additional support near the express drops where covers have not been used.

Suits:

- 100mm cut to 35mm long, TC1279-24SKIT, 100mm Snap-on lid cut to 35mm kit (10 Pairs) or TC1279-24SKITA, 100mm Snap-on lid cut to 35mm kit (20 Pairs)
- 220mm cut to 35mm long , TC1279-22SKIT, 220mm Snap-on lid cut to 35mm kit (10 Pairs) or TC1279-22SKITA, 220mm Snap-on lid cut to 35mm kit (20 Pairs)
- 300mm cut to 35mm long , TC1279-276SKIT, 300mm Snap-on lid cut to 35mm kit (10 Pairs) or TC1279-276SKITA, 300mm Snap-on lid cut to 35mm kit (20 Pairs)



EXPRESS OUTLETS

Express top outlet (clip on) drop-off kits 100 x 100mm exit

100mm x 100mm express top outlet drop-off solutions are suitable for 100mm x 50mm, 100mm x 100mm, 220mm x 100mm, 300mm x 100mm and 600mm x 100mm straight duct lengths. These style outlets simply clip onto the top of the ducting raceway, providing an express outlet (drop) along a length of ducting. No slotting, bolting or cutting is required for installing these components onto the straight duct length.

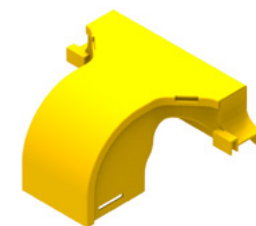
- Simply clips onto the top of a straight duct length
- Straight duct components ordered separately



TC1279-531A

Express top outlet drop-off to 50mm x 50mm ducting raceway, horizontal

- This drop can fit between 300-400 x 2mm cables
- Fits on any duct 100mm x 50mm or larger



TC1279-307A

Express top outlet drop-off to 100mm x 100mm ducting raceway, vertical

- This drop can fit between 300-400 x 2mm cables
- Fits on any duct 100mm x 50mm or larger

Additional outlet lids

For each outlet in the range, special lids are available that close the space between the express outlets and the duct.

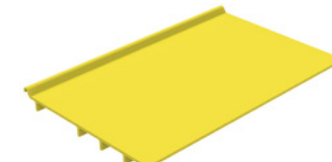
TC1279-290B

Duct lid for top outlet assembly 100mm



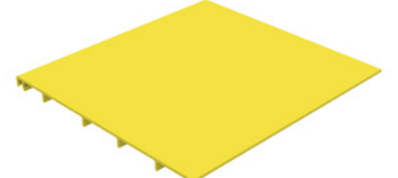
TC1279-290C

Duct lid for top outlet assembly 220mm



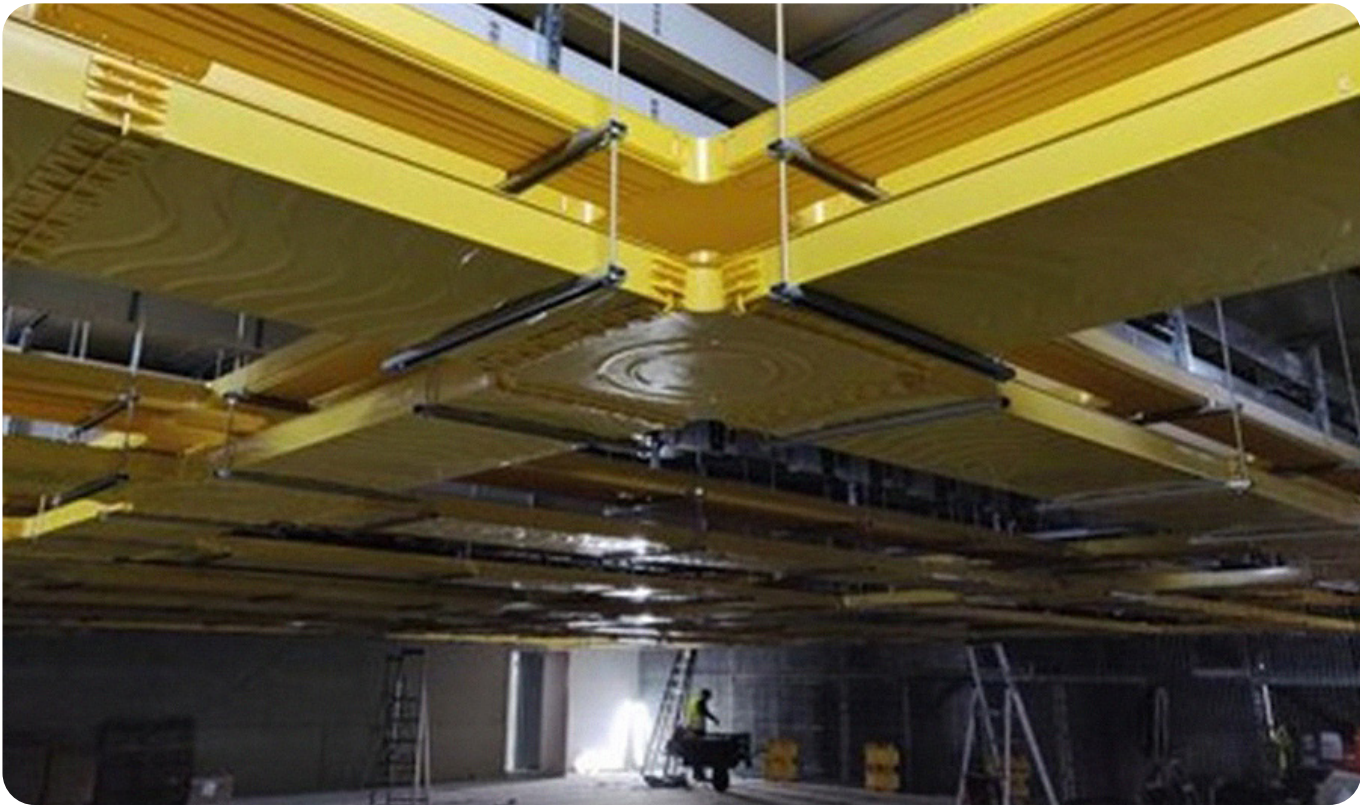
TC1279-290 D

Duct lid for top outlet assembly 300mm



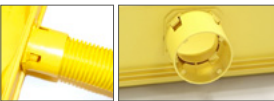
DROP-OFF SOLUTIONS

These components provide different methods of allowing fibres to enter or leave the fibre optic ducting raceway. They can be purchased as kits or as individual items.



Side spill out kit

This drop-off assembly can be installed anywhere along the length of a 100mm high duct to allow up to 80 x 2mm optical fibre cords to leave the duct horizontally or vertically (if installed on the floor of the straight duct). Use cutout tool / hole saw TC1279-604KIT with a drill to make a cut into the ducting.



TC1279-602A
Duct side spill out, straight outlet to convoluted tubing



TC1279-609A
Duct side spill out, 90°, up / down / left / right to convoluted tubing

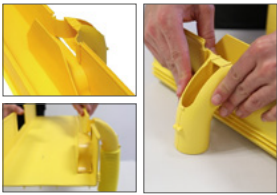


Note: Convoluted tube TC1279-53Y or TC1279-53B suits these drop offs (See page 24)

Side drop-off kits - 50mm x 50mm exit

50mm (2") duct drop-off solutions are suitable for 50mm x 50mm, 100mm x 50mm, 100mm x 100mm, 220mm x 100mm, 300mm x 100mm and 600mm x 100mm straight duct lengths.

- Use tool TC1279-483A to make cut-out in side of duct
- Round convoluted tube, square convoluted tube and straight duct components ordered separately



TC1279-41KIT
50mm (2") side drop-off (outlet) to 50mm dia round convoluted tube
- Can fit approx. 80 x 2mm cables
- Also includes duct ramp



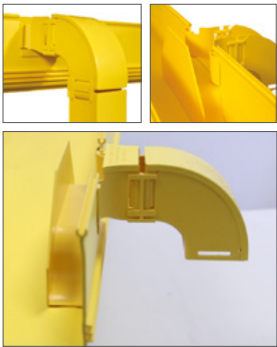
TC1279-41A
50mm (2") side drop-off (outlet only)
- Can fit approx. 80 x 2mm cables



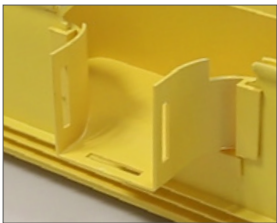
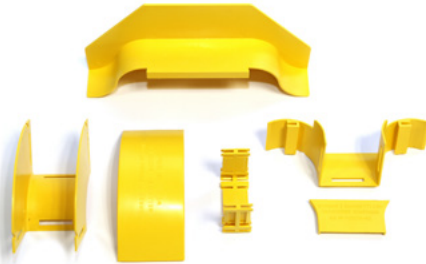
TC1279-89KIT
Side drop-off to 50mm (2") square convoluted tube (TC1279 - 85YEL)
- Can fit approx. 100-150 x 2mm cables
- Also includes duct ramp



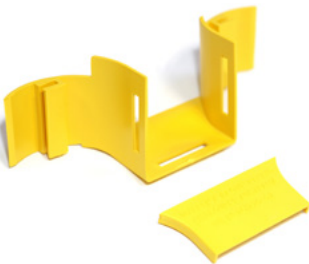
TC1279-89A
Side drop-off (outlet) to 50mm square only
- Can fit approx. 100-150 x 2mm cables
- Fits square tube TC1279 - 85YEL



TC1279-93KIT
Side drop-off kit to 50mm ducting raceway
- Can fit between 100-150 x 2mm cables
- Full kit for vertical drop (includes duct outlet, duct ramp, joiner and vertical elbow)
- Straight duct lengths ordered separately



TC1279-93A
Side breakout to 50mm ducting raceway
- Can fit between 100-150 x 2mm cables
- Straight duct lengths, duct ramp, joiner and elbow ordered separately



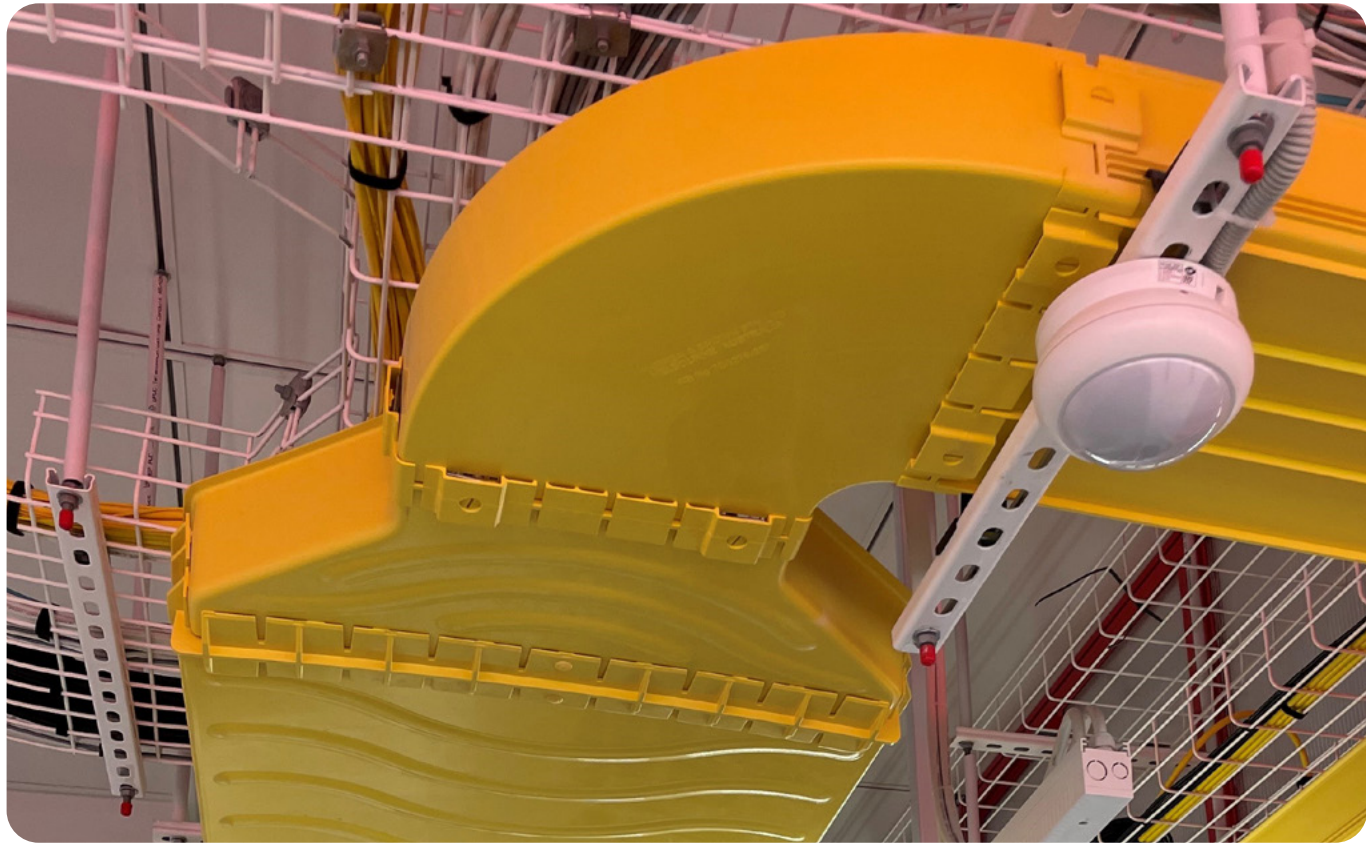
REDUCERS

Prysmian Fibre Raceway reducers allow different size ducts to be joined together. They are available with or without covers.



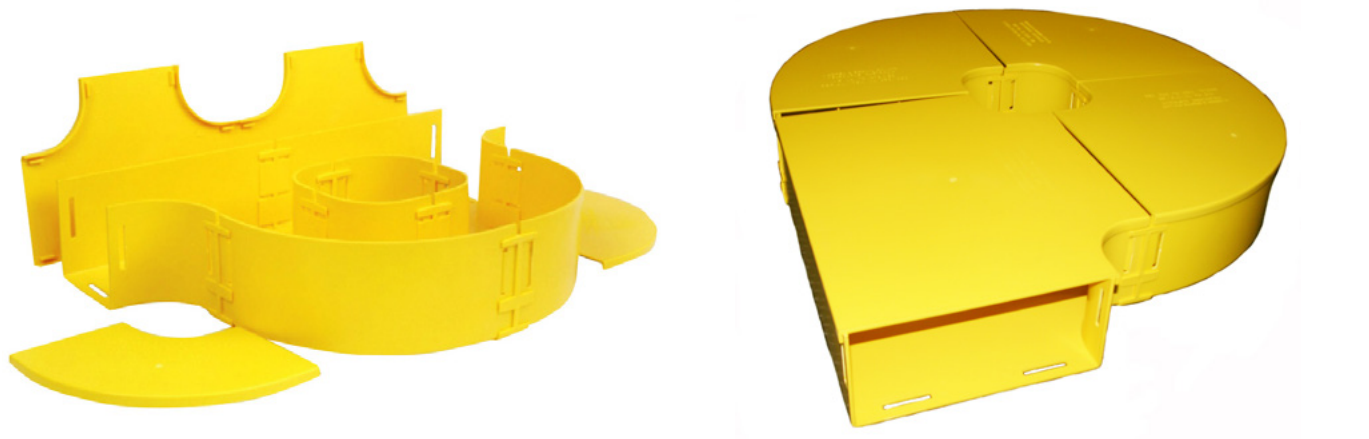
TC1279-07A

| MAIN SIZE (MM) REDUCTION SIZE (MM) | 100MM X 50 50MM X 50 | 100MM X 100 50MM X 50 | 100MM X 100 100MM X 50 | 220MM X 100 100MM X 100 | 300MM X 100 220MM X 100 | 600MM X 100 300MM X 100 |
|---------------------------------------|-------------------------|--------------------------|---------------------------|----------------------------|----------------------------|----------------------------|
| Reducer | TC1279-238 | TC1279-91 | TC1279-240 | N/A | TC1279-281 | TC1279-408 |
| Reducer and cover | TC1279-238A | TC1279-91A | TC1279-240A | N/A | TC1279-281A | TC1279-408A |
| Reducer right-hand | N/A | N/A | N/A | TC1279-05 | N/A | N/A |
| Reducer right-hand and cover | N/A | N/A | N/A | TC1279-05A | N/A | N/A |
| Reducer left-hand | N/A | N/A | N/A | TC1279-07 | N/A | N/A |
| Reducer left-hand and cover | N/A | N/A | N/A | TC1279-07A | N/A | N/A |



FIBRE-STORAGE LOOPS

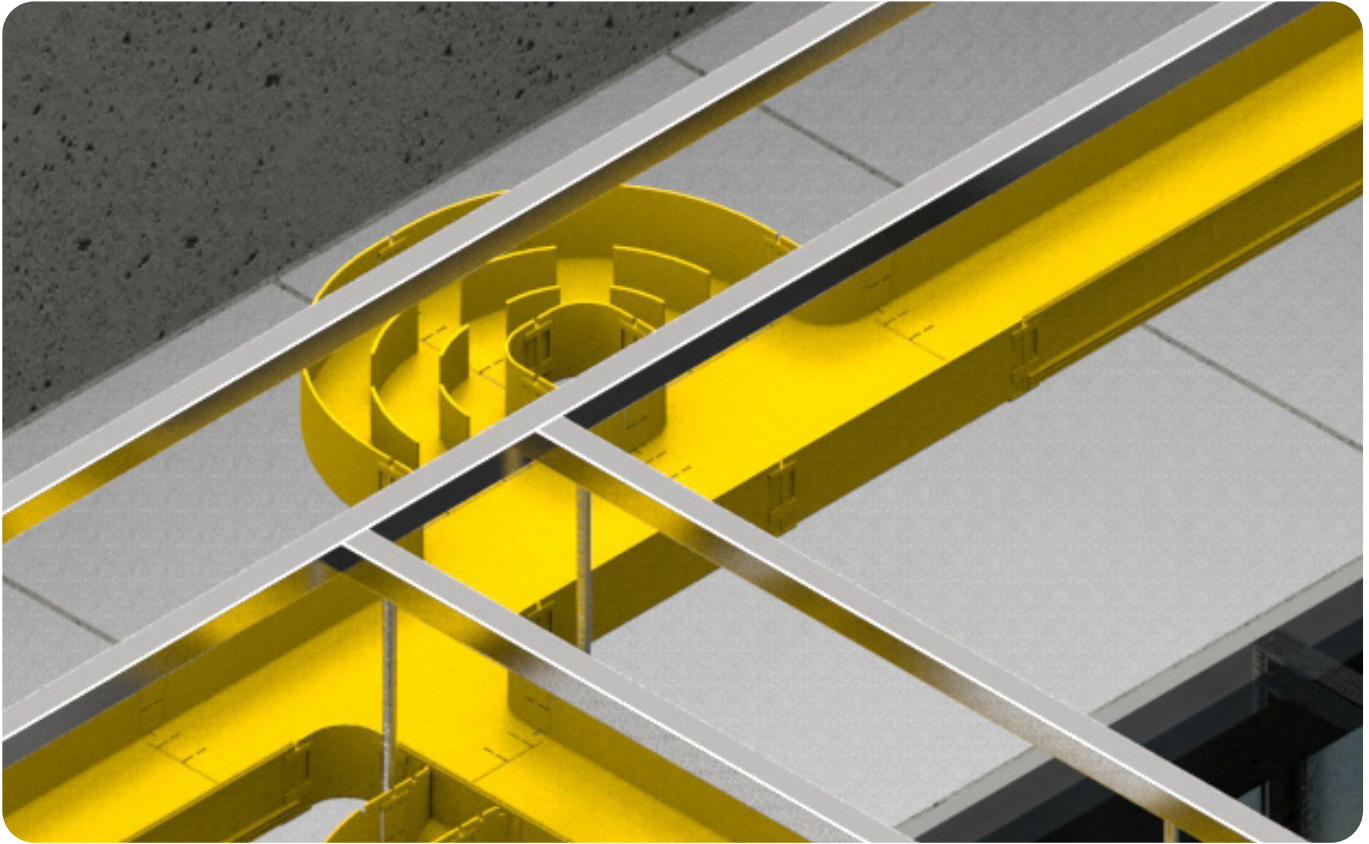
Prysmian Fibre Raceway fibre-storage loops are used to safely store excess optical fibre cable lengths and can be placed in any horizontal route or inside cabinets. They are available in inline or offset versions.



TC1279-208KIT

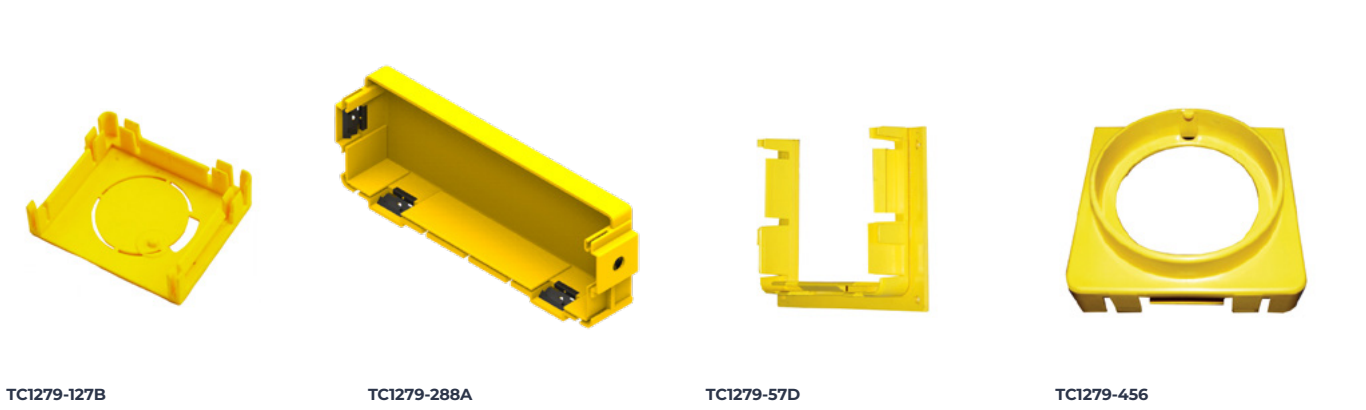
TC1279-191KIT

| SIZE (MM) SIZE (INCHES) | 50MM X 50 2" X 2" | 100MM X 50 4" X 2" | 100MM X 100 4" X 4" | 220MM X 100 8" X 4" | 300MM X 100 12" X 4" |
|----------------------------|----------------------|-----------------------|------------------------|------------------------|-------------------------|
| Inline | TC1279-209KIT | TC1279-186KIT | TC1279-208KIT | TC1279-207KIT | TC1279-485KIT |
| Offset | TC1279-178KIT | TC1279-195KIT | TC1279-192KIT | TC1279-191KIT | TC1279-315KIT |



END CAPS

Prysmian Fibre Raceway end caps are used to close off the end of a horizontal or vertical route of duct. However, some end caps can be used as drop-out options incorporating various tube diameters to feed the fibre to racks. Some are sealed, others have knock outs or spigots for convoluted tubing or fibre feedout.

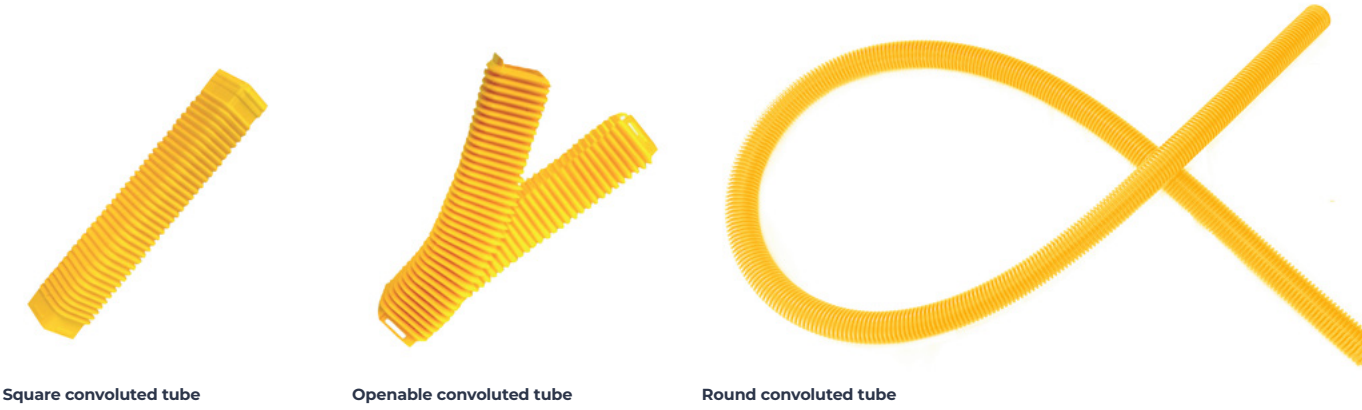


| SIZE (MM) SIZE (INCHES) | 50MM X 50 2" X 2" | 100MM X 50 4" X 2" | 100MM X 100 4" X 4" | 220MM X 100 8" X 4" | 300MM X 100 12" X 4" | 600MM X 100 24" X 4" |
|--|----------------------|-----------------------|------------------------|------------------------|-------------------------|-------------------------|
| Sealed | N/A | TC1279-227 | TC1279-57 | TC1279-56 | N/A | N/A |
| Sealed (for use with slotless joiners) | N/A | N/A | TC1279-251 | TC1279-252 | TC1279-288 | TC1279-435 |
| 2 x 20mm dia knockouts | TC1279-127 | N/A | N/A | N/A | N/A | N/A |
| 1 x 38mm dia knockout | TC1279-127B | N/A | N/A | N/A | N/A | N/A |
| 1 x 38mm cutout | TC1279-127C | N/A | N/A | N/A | N/A | N/A |
| Tube outlet for 50mm tube | TC1279-127D | N/A | N/A | N/A | N/A | N/A |
| 2 x 32mm dia knockouts | N/A | N/A | TC1279-57B | N/A | N/A | N/A |
| 2 x 46mm dia holes | N/A | N/A | TC1279-57C | N/A | N/A | N/A |
| End-support bracket | TC1279-127F | N/A | TC1279-57D | N/A | N/A | N/A |
| 88mm tube outlet | N/A | N/A | TC1279-456 | N/A | N/A | N/A |
| Dual 88mm tube outlets | N/A | N/A | N/A | TC1279-457 | N/A | N/A |

TUBING

Prysmian Fibre Raceway tubing is used for feeding entering or exiting optical fibres from the ducting raceway into equipment racks.

They are convoluted or ribbed to allow adjustment if drops cannot be positioned exactly over or under equipment. Some are available with removable covers, or split for ease of cable installation.

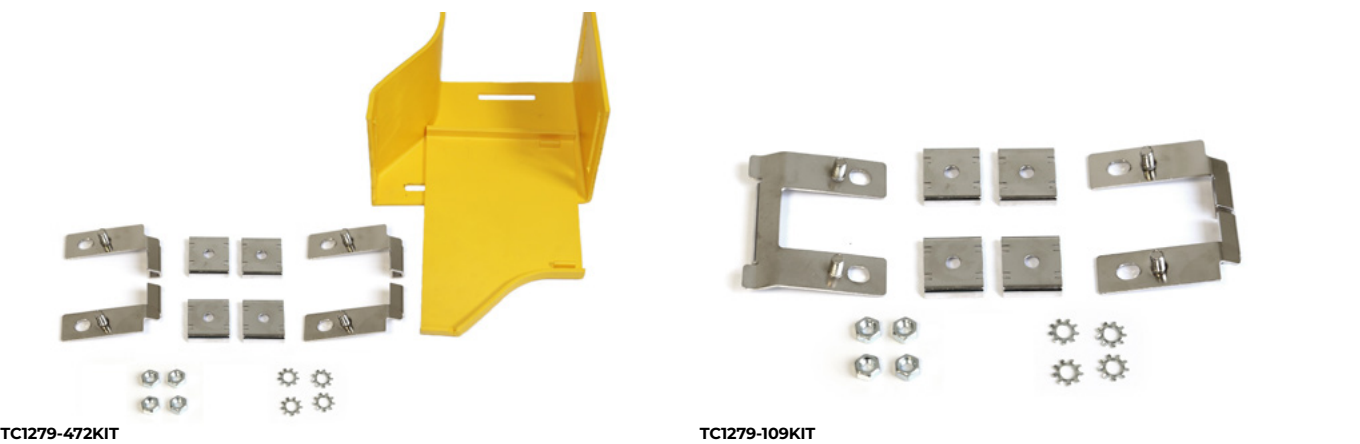


| DESCRIPTION | YELLOW | BLACK |
|--|---------------|--------------|
| Convoluted tube 50mm dia (1 metre length) | TC1279-26Y | TC1279-26 |
| Convoluted tube 50mm dia (2 metre length) | TC1279-53Y | TC1279-53 |
| Convoluted tube 25mm dia (2 metre length) | N/A | TC1279-54 * |
| Convoluted tube 38mm dia (2 metre length) | N/A | TC1279-68 |
| Convoluted tube 50mm square (350mm length) | TC1279-85YEL | TC1279-85BLK |
| Openable convoluted tube with cover 50mm square (350mm length) | TC1279-85KIT | N/A |
| Convoluted tube 30mm square (350mm length) | TC1279-88 | N/A |
| Convoluted tube split 20mm dia (2 metre length) | N/A | TC1279-100 * |
| Convoluted tube split with cover 50mm dia (1 metre length) | N/A | TC1279-350 |
| Convoluted tube, flexible, 75mm ID/88mm OD x 2 metres long | TC1279-458 | N/A |
| Convoluted tube, flexible, 75mm ID/88mm OD x 1 metres long | TC1279-458-1 | N/A |
| Convoluted tube, flexible, 65mm ID/83mm OD x 2 metres long | TC1279-471 | N/A |
| Convoluted tube, flexible, 65mm ID/83mm OD x 1 metres long | TC1279-471-1 | N/A |
| Convoluted tube, flexible, 75mm ID/88mm OD x 1.15 metres long | TC1279-479 | N/A |
| Convoluted tube 63mm ID/ 65mm OD x 1.1 metres, c/w two joiners to connect to 75mm ID/88mm OD convoluted tube | TC1279-480A | N/A |
| Convoluted tubing Adaptor kit, 75mm ID/ 88mm OD to 44mm ID/ 50mm OD tubing | TC1279-494KIT | N/A |

*Grey

ADAPTORS

Prysmian Fibre Raceway adaptors are used to connect parts from other products to the ducting raceway. Most other ducting brands can be slotted with a Prysmian slotting tool to suit one of our slotted joiners.



| DESCRIPTION | PART NO. |
|--|-----------------|
| Adaptor kit 100mm x 100 Fibre Raceway to Commscope 4" | TC1279-109KIT |
| Adaptor kit left-hand Fibre Raceway 220mm x 100mm to Commscope 6" | TC1279-149KIT |
| Adaptor kit right-hand Fibre Raceway 220mm x 100mm to Commscope 6" | TC1279-150KIT |
| Adaptor kit 100mm vertical Fibre Raceway to Commscope 4",6" or 12" | TC1279-307SLKIT |
| Adaptor kit Fibre Raceway 300mm x 10mm to Commscope 12" | TC1279-327KIT |
| Adaptor kit right-hand Fibre Raceway 100mm x 100mm to Commscope 6" | TC1279-472KIT |
| Adaptor kit left-hand Fibre Raceway 100mm x 100mm to Commscope 6" | TC1279-473KIT |
| Adaptor kit right-hand Fibre Raceway 220mm x 100mm to Panduit 6" | TC1279-486KIT |
| Adaptor kit left-hand Fibre Raceway 220mm x 100mm to Panduit 6" | TC1279-487KIT |
| Adaptor kit Fibre Raceway 300mm x 10mm to 12" x 4" Panduit duct | TC1279-492KIT |
| Adaptor kit 100mm Fibre Raceway to 4" Panduit duct | TC1279-173KIT |

MOUNTING SOLUTIONS

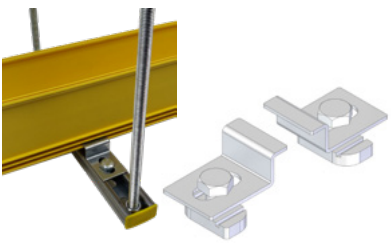
Prysmian Fibre Raceway mounting hardware is used to support the ducting raceway from different structures.



Although the most common components are shown here, many other components that have been developed for specific applications or customer requests are also available. Mounting systems are also available for retro-fitting to existing installations. Custom components can also be manufactured to your specifications. Please contact your Prysmian sales office or distributor for assistance.

We probably already have a mounting solution that meets your requirements

Metal mounting kits for steel-work or wall mounting
Provides vertical and horizontal mounting flexibility to steel-work or walls.



Only our clamps need to be ordered, the rest can be obtained in local hardware stores.
The ideal way to secure your duct to existing infrastructure is simply using horizontal Unistrut rails (cut to the size of duct width) on which the clamps are fixed with threaded rods on each side. Smooth fit on the Unistrut without any space in between.

TC1279-DCUM-10
Universal duct clamp (pack of 10 pieces) for duct size 100mm, 220mm, 300mm

TC1279-DCUM-6
Universal duct clamp (pack of 10 pieces) for duct size 600mm



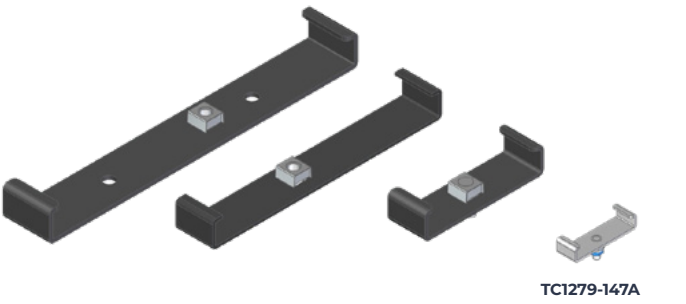
TC1279-104KIT
100mm duct wall-mounting bracket
The wall-mounting bracket is used to attach 100mm plastic duct to any existing structure.



TC1279-303A
Side-mounting bracket, heavy duty
This side-mounting bracket is used to install and secure 100mm, 220mm or 300mm duct to existing threaded rods.
Note: Used in conjunction with "C" type mounting hardware

Mounting hardware duct "C" type brackets
This assembly consists of a standard (50mm, 100mm, 220mm, 300mm) duct support bracket. This assembly is used where the duct is directly mounted to flat brackets with 13mm (1/2" clearance) dia holes.

| SIZE | PART NO. |
|-------|-------------|
| 50mm | TC1279-147A |
| 100mm | TC1279-16A |
| 220mm | TC1279-15A |
| 300mm | TC1279-297A |



Suspension kits

These suspension-mounting bracket kits are used to attach either 300mm, 220mm or 100mm plastic duct to existing steelwork from above.

Note: All metal brackets are either nickel plated or black powdercoat paint



TC1279-297KIT
300mm heavy-duty suspension duct-mounting kit



TC1279-106KITA
220mm duct suspension-bracket kit (including 12mm threaded rod)



TC1279-297AKIT
300mm x 100mm duct system, mounting-bracket kit, suspension type, 1/2" with threaded rod

TC1279-106KITB
220mm duct suspension-bracket kit (including 16mm threaded rod)

TC1279-297BKIT
300mm x 10mm duct system, mounting-bracket kit, suspension type, 5/8" with threaded rod



TC1279-107KITA
100mm duct suspension-bracket kit (including 12mm threaded rod)



TC1279-106KIT
220mm duct suspension-bracket kit



TC1279-107KIT
100mm duct suspension-bracket kit

TC1279-107KITB
100mm duct suspension-bracket kit (including 16mm threaded rod)



TC1279-438A
600mm x 100mm duct mounting-bracket assembly

Ladder-rack mounting



TC1279-370KIT
100mm, 220mm, 300mm ladder-rack mount kit, large
This clamp is a means of attaching either 100mm, 220mm or 300mm duct systems to 1" and 2" ladder racks
Note: Heavy duty. Used in conjunction with "C" type mounting hardware

Note: Used in conjunction with "C" type mounting hardware

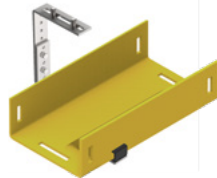


TC1279-155KIT
Ladder-rack mount kit, 100mm and 220mm duct
These clamps are a means of fixing either 100mm, 220mm duct systems to 1.5" and 2" ladder-racks
Note: Used in conjunction with "C" type mounting hardware

"C" rail-mounting kits

These kits are attached to the rail with two screws. Multiple holes provide vertical adjustment in 21mm increments.

- Simple clamp system adapts to "C" rail
- Suits 100mm, 220mm or 300mm duct systems
- Includes: nuts, screws and washers



TC1279-155AKIT
"C" rail-mounting kit, 100mm duct
Note: Includes 100mm duct bracket



TC1279-155BKIT
"C" rail-mounting kit, 220mm duct
Note: Includes 220mm duct bracket



TC1279-155CKIT
"C" rail-mounting kit, 300mm duct
Note: Includes 300mm duct bracket

Raised mounting kits



TC1279-13A
Mounting-bracket assembly, 220mm duct with M12 threaded rod
The mounting bracket provides an adjustable mounting mechanism for the 220mm plastic ducting system



TC1279-14A
Mounting-bracket assembly, 100mm duct with M12 threaded rod
The mounting bracket provides an adjustable mounting mechanism for the 100mm plastic ducting system



TOOLING COMPONENTS

Ducting slotting tool - foot operated

Features and benefits:

- Ducting can be easily aligned and positioned on slotting jig
- Fast and easy-to-use slotting mechanism which slots in seconds
- Compact, easy-to-transport unit which only weighs 8kg
- Steady and robust platform
- Ergonomically designed, no stress or heavy manual operation required as it only requires leg power
- Conforms to OHandS standards or/and Directive 2009/104/EC
- Repeatedly produces accurate slots
- Slots an end of duct in less than 30 seconds

Note: Ideal for large installations



DUCT-SUPPORT PLATE
TC1279-500-126KIT

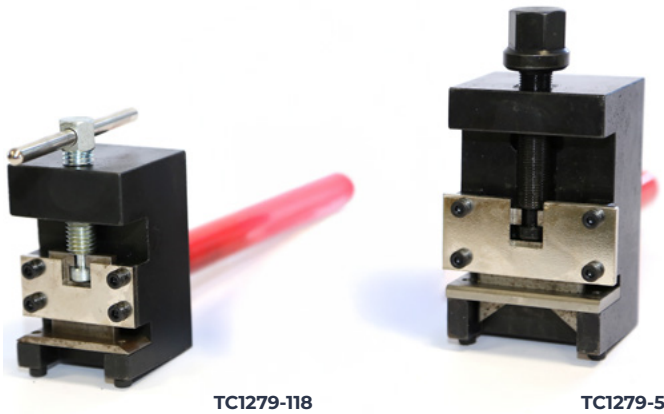
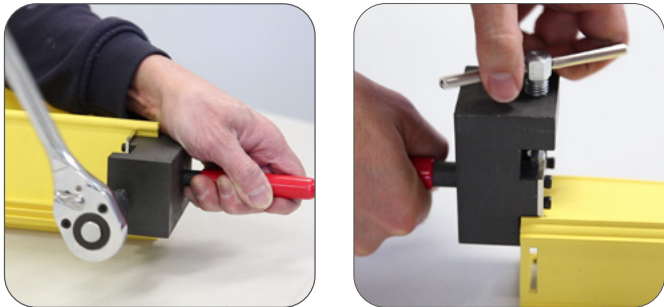
| DUCT SIZE (MM) | DUCT SIZE (INCHES) | PART NO. |
|----------------|--------------------|------------|
| 100mm x 100mm | 4" x 4" | TC1279-23 |
| 220mm x 100mm | 8" x 4" | TC1279-21 |
| 300mm x 100mm | 12" x 4" | TC1279-275 |

| PART NO. | DESCRIPTION |
|---------------|--|
| TC1279-500KIT | Foot-operated duct slotting tool (with tool box) |

Side-slotting tool

The slotting tool is used to make a small slot in the bottom and both sides at the end/s of duct. This process is a simple mechanical means of preparing a shortened length duct for connection to another standard part: e.g. elbow, cross connector, tees, adaptor assembly, duct end or drop offs, etc.

| PART NO. | DESCRIPTION |
|------------|--|
| TC1279-230 | for 100mm x 50mm duct (side slots only) |
| TC1279-51 | for 100mm x 50mm duct (base slots only), for 220mm x 100mm, 300mm x 100mm, 100mm x 100mm |
| TC1279-118 | for 50mm duct |



TC1279-118

TC1279-51

Ducting hydraulic hand-held slotting tool

The hand-held hydraulic duct slotting tool is a revolutionary design that takes the stress and effort out of slotting duct. Take advantage of this new method of safely and easily slotting ducting, which will improve the efficiency of your installations and save you and your customer time and money.

| DUCT SIZE (MM) | DUCT SIZE (INCHES) | PART NO. |
|----------------|--------------------|------------|
| 100mm x 100mm | 4" x 4" | TC1279-23 |
| 220mm x 100mm | 8" x 4" | TC1279-21 |
| 300mm x 100mm | 12" x 4" | TC1279-275 |

| PART NO. | DESCRIPTION |
|----------------|---|
| TC1279-501 | 100mm hand hydraulic tool |
| TC1279-501-13S | 100mm hand hydraulic tool head |
| TC1279-501KIT | 100mm hand hydraulic tool kit with tool box |

Features and benefits:

- No need to exert excessive force as the unit is hydraulic powered
- Safe and easy to use
- Ergonomically designed
- Compact design which is easy to transport and doesn't require excess storage space
- Saves you time by slotting duct quickly
- Allows you to slot an end of duct in less than a minute
- Lightweight, only 2kg
- Repeatedly produces accurate slots
- Slots a variety of duct sizes from 100mm x 50mm up to 300mm x 100mm



TC1279-501 100MM HAND HYDRAULIC TOOL



Look us up on Youtube for
tooling instructional videos



Warren and Brown



Mitre kits

Mitre boxes allow accurate and straight cuts on ducting, essential for the correct alignment of the slotting tools and joiners.



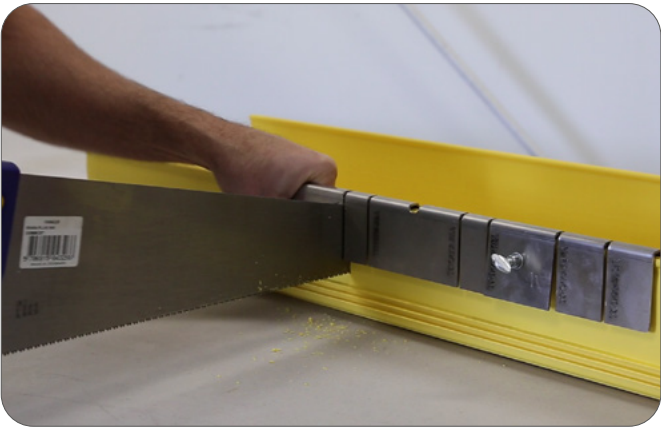
TC1279-118-07
Mitre box duct, 50mm

Look us up on Youtube for tooling instructional videos

Warren and Brown



TC1279-MITRE
Mitre box duct 100mm, 220mm, 300mm



TC1279-483A
Cut-out jig for drop-offs and breakout guides - suitable for all ducts from 50mm to 600mm

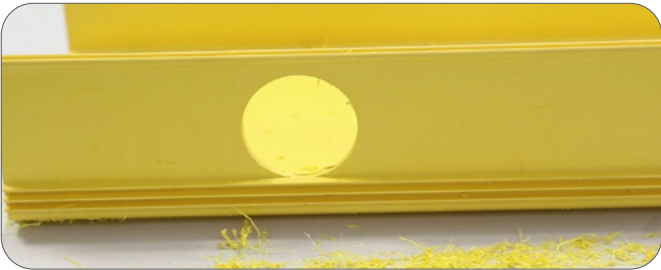
Duct spill-out tool

This kit is used to cut the 60mm hole in the side and bottom of the duct to accommodate drop-outs (TC1279-602A, TC1279-609A)

Note: If optic fibre cords already in duct, use TC1279-50-3 to protect the cords



TC1279-604KIT
Duct spill-out and installation template



Duct tool kits



TC1279-51A

Fibre spreader



TC1279-50-3
Fibre spreader and protector

| TOOLING | PART-NR. | DUCTING SIZE | | | | | |
|---------------------|------------------|--------------|----------|-----------|-----------|-----------|-----------|
| | | 50/50MM | 100/50MM | 100/100MM | 220/100MM | 300/100MM | 600/100MM |
| Mitre kits | TC1279-118-07 | YES | – | – | – | – | – |
| | TC1279-MITRE | – | YES | YES | YES | YES | – |
| Slotting tools | TC1279-500A(KIT) | – | – | YES | YES | YES | – |
| | TC1279-501A(KIT) | – | – | YES | YES | YES | – |
| | TC1279-51A(KIT) | – | YES* | YES | YES | YES | – |
| | TC1279-118A(KIT) | – | YES* | – | – | – | – |
| Duct spill-out tool | TC1279-604KIT | – | – | YES | YES | YES | YES |
| Cut-out template | TC1279-483A | YES | YES | YES | YES | YES | YES |
| Fibre spreader | TC1279-50-3 | YES | YES | YES | YES | YES | YES |

* Both tools needed, side walls 118 and bottom 51

Prysmian part numbers

| WB PART NO. | PRYSMIAN PART NO. | DESCRIPTION | PAGE NO. |
|----------------|-------------------|------------------------------------|----------|
| 100X060 | YYDSC04702 | PANEL SAW | * |
| 62X41 | YYDSC04701 | SLOTLESS JOINER LOCK / UNLOCK TOOL | * |
| TC1279-01 | YYDSC04700 | 220MM TEE PIECE | 13 |
| TC1279-01A | YYDSC04368 | 220MM TEE ASSEMBLY | 13 |
| TC1279-03 | YYDSC04699 | 100MM TEE PIECE (BODY ONLY) | 13 |
| TC1279-03A | YYDSC04369 | 100MM TEE ASSEMBLY(BODY+LID) | 13 |
| TC1279-05 | YYDSC04698 | 220-100 RH ADAPTOR | 20 |
| TC1279-05A | YYDSC04370 | 220-100 RH ADAPTOR ASSEMBLY | 20 |
| TC1279-07 | YYDSC04697 | 220-100MM LH ADAPTOR | 20 |
| TC1279-07A | YYDSC04696 | 220-100MM LH ADAPTOR ASSEMBLY | 20 |
| TC1279-09 | YYDSC04695 | 220-100MM TEE PIECE | * |
| TC1279-09A | YYDSC04371 | 220-100MM TEE ASSEMBLY | 13 |
| TC1279-10 | YYDSC04734 | 220-100MM TEE LID | 13 |
| TC1279-100 | YYDSC04694 | 20MM CON FLEX TUBE SPLIT | 23 |
| TC1279-103KIT | YYDSC04707 | SUPPORT BRACKET KIT 100MM | 25 |
| TC1279-104KIT | YYDSC04493 | WALL MOUNT BRACKET KIT 100MM | 25 |
| TC1279-106 | YYDSC04735 | SUSPENSION BRACKET 220MM | * |
| TC1279-106KIT | YYDSC04372 | 220MM SUSPENSION KIT | 26 |
| TC1279-106KITA | YYDSC04693 | 220MM SUSPENSION KIT(12MM ROD) | 26 |
| TC1279-106KITB | YYDSC04692 | 220MM SUSPENSION KIT-16MM ROD | 26 |
| TC1279-107 | YYDSC04736 | 100MM SUSPENSION BRACKET | 26 |
| TC1279-107KIT | YYDSC04373 | 100MM SUSPENSION KIT FOR 12 & | 26 |
| TC1279-107KITA | YYDSC04691 | 100MM SUSPENSION KIT(12MM ROD) | 26 |
| TC1279-107KITB | YYDSC04690 | 100MM SUSPENSION KIT-16MM ROD | 26 |
| TC1279-109KIT | YYDSC04876 | ADAPTOR KIT 100MM-4"COMMSCOPE DUCT | 24 |
| TC1279-11 | YYDSC04876 | INTRA-SUITE ENTRY 220MM | 14 |
| TC1279-111 | YYDSC04688 | 100MM 90D ELBOW DOWN BODY | 14 |
| TC1279-111-30 | YYDSC04687 | 100MM 30D ELBOW DOWN BODY | 14 |
| TC1279-111-30A | YYDSC04686 | 100MM 30D ELBOW ASSEMBLY DOWN EXT | 14 |
| TC1279-111-30R | YYDSC04685 | 100MM 30D ELBOW ASSEMBLY DOWN EXT | 14 |
| TC1279-111-45 | YYDSC04684 | 100MM 45DEG.DOWN ELBOW BODY | 14 |
| TC1279-111-45A | YYDSC04683 | 100MM 45D DOWN ELBOW ASSEMBLY | 14 |
| TC1279-111-45R | YYDSC04682 | 100MM 45D ELBOW ASSEMBLY DOWN SLOT | 14 |
| TC1279-111A | YYDSC04374 | 100MM 90D ELBOW DOWN ASSEMBLY | 14 |
| TC1279-111KIT | YYDSC04375 | 100 X 100MM ELBOW DOWN KIT | 16 |
| TC1279-111R | YYDSC04681 | 100MM 90D ELBOW ASSEMBLY DOWN SLOT | 14 |
| TC1279-113 | YYDSC04680 | 100MM 90D ELBOW UP BODY | 14 |
| TC1279-113-30 | YYDSC04679 | 100MM 30D ELBOW UP BODY | 14 |
| TC1279-113-30A | YYDSC04678 | 100MM 30D ELBOW UP ASS. | 14 |
| TC1279-113-30R | YYDSC04677 | 100MM 30D ELBOW ASSEMBLY UP SLOT | 14 |
| TC1279-113-45 | YYDSC04676 | 100MM 45D ELBOW BODY UP | 14 |
| TC1279-113-45A | YYDSC04675 | 100MM 45D ELBOW ASSEMBLY UP | 14 |
| TC1279-113-45R | YYDSC04674 | 100MM 45D ELBOW ASSEMBLY UP SLOT | 14 |
| TC1279-113A | YYDSC04376 | 100MM 90D ELBOW UP ASSEMBLY | 14 |
| TC1279-113R | YYDSC04673 | 100MM 90D ELBOW ASSEMBLY UP SLOT | 14 |

| | | | |
|----------------|------------|---------------------------------------|----|
| TC1279-118 | YYDSC04377 | 50MM SLOTTING TOOL ASSEMBLY | 28 |
| TC1279-118-07 | YYDSC04672 | MITRE BOX TO SUIT 30 & 50MM | 30 |
| TC1279-118KIT | YYDSC04499 | 50MM SLOT & MITRE KIT | * |
| TC1279-11A | YYDSC04378 | INTRA-SUITE ASSEMBLY 220 X 100MM DROP | 14 |
| TC1279-11R | YYDSC04671 | INTRA-SUITE ASSEMBLY 220MM RETRO | 14 |
| TC1279-123 | YYDSC04669 | 220MM ELBOW DOWN BODY | 14 |
| TC1279-123-30 | YYDSC04668 | 220MM 30DEG ELBOW DOWN BODY | 14 |
| TC1279-123-30A | YYDSC04667 | 220MM 30DEG ELBOW DOWN ASSEMBLY | 14 |
| TC1279-123-30R | YYDSC04666 | 220MM 30D ELBOW ASSEMBLY DOWN SLOT | 14 |
| TC1279-123-45 | YYDSC04665 | 220MM 45DEG.DOWN ELBOW BODY | 14 |
| TC1279-123-45A | YYDSC04503 | 220MM 45D ELBOW DOWN ASSEMBLY | 14 |
| TC1279-123-45R | YYDSC04664 | 220MM 45DEG ELBOW DOWN R/F ASS | 14 |
| TC1279-123A | YYDSC04663 | 220MM 90D ELBOW ASSEMBLY DOWN | 14 |
| TC1279-123R | YYDSC04662 | 220MM 90D ELBOW ASSEMBLY DOWN R/F | 14 |
| TC1279-125 | YYDSC04661 | 220MM ELBOW UP | 14 |
| TC1279-125-30 | YYDSC04660 | 220MM 30DEG ELBOW UP BODY | 14 |
| TC1279-125-30A | YYDSC04659 | 220MM 30DEG ELBOW UP ASSEMBLY | 14 |
| TC1279-125-30R | YYDSC04658 | 220MM 30D ELBOW ASSEMBLY UP SLOT | 14 |
| TC1279-125-45 | YYDSC04657 | 220MM 45DEG ELBOW UP BODY | 14 |
| TC1279-125-45A | YYDSC04502 | 220MM 45DEG ELBOW UP ASSEMBLY | 14 |
| TC1279-125-45R | YYDSC04656 | 220MM 45R ELBOW UP RETRO ASSEMBLY | 14 |
| TC1279-125A | YYDSC04655 | 220MM 90D ELBOW ASSEMBLY UP | 14 |
| TC1279-125R | YYDSC04654 | 220MM 90D ELBOW ASSEMBLY UP R/F | 14 |
| TC1279-127 | YYDSC04482 | 50MM END COVER | 22 |
| TC1279-127B | YYDSC04492 | 50MM END COVER 38MM KNOCKOUT | 22 |
| TC1279-127C | YYDSC04653 | 50MM END COVER WITH R/F CUTOUT | 22 |
| TC1279-127D | YYDSC04379 | 50MM CAP COVER & OUTLET TUBE | 22 |
| TC1279-127F | YYDSC04485 | 50MM DUCT END SUPPORT BRACKET | 22 |
| TC1279-129KIT | YYDSC04652 | MOUNT BRACKET KIT | * |
| TC1279-130KIT | YYDSC04651 | MOUNT BRACKET KIT | * |
| TC1279-133KIT | YYDSC04466 | 220MM WALL & FRAME BRACKET KIT | * |
| TC1279-139 | YYDSC04484 | 50MM CROSS CONNECTOR | 13 |
| TC1279-139A | YYDSC04877 | 50MM CROSS CONNECTOR ASSEMBLY | 13 |
| TC1279-13A | YYDSC04650 | 220MM MOUNT BRACKET ASSEMBLY | 27 |
| TC1279-143 | YYDSC04649 | 50MM 90D ELBOW BODY UP | 14 |
| TC1279-143-45A | YYDSC04647 | 50MM 45D ELBOW UP ASSEMBLY | 14 |
| TC1279-143-45A | YYDSC04648 | 50MM 45D ELBOW UP ASSEMBLY | 14 |
| TC1279-143-45R | YYDSC04646 | 50MM 45D ELBOW UP RETRO ASSEMBLY | 14 |
| TC1279-143A | YYDSC04488 | 50MM 90D ELBOW ASSEMBLY UP | 14 |
| TC1279-143R | YYDSC04645 | 50MM 90D ELBOW ASSEMBLY UP R/F | 14 |
| TC1279-145 | YYDSC04644 | 50MM INTRA SUITE BODY | 14 |
| TC1279-145A | YYDSC04491 | 50MM INTRA SUITE ASSEMBLY | 14 |
| TC1279-145R | YYDSC04643 | 50MM INTRA SUITE ASSEMBLY R/F | 14 |
| TC1279-147A | YYDSC04380 | 50MM MOUNT BRACKET ASSEMBLY | 25 |
| TC1279-147KIT | YYDSC04642 | MOUNTING BRACKET KIT (50MM) | 25 |
| TC1279-149KIT | YYDSC04738 | 220MM-6" COMMSCOPE LH ADAPTOR KIT | 24 |
| TC1279-14A | YYDSC04381 | 100MM MOUNT BRKT. & STUD ASSEMBLY | 27 |
| TC1279-150KIT | YYDSC04739 | 220MM-6" COMMSCOPE RH ADAPTOR KIT | 24 |

| | | | |
|-----------------|------------|--|----|
| TC1279-154KIT | YYDSC04641 | 30/50MM LADDER RACK MOUNT KIT | 27 |
| TC1279-155AKIT | YYDSC04487 | C RAIL MOUNTING KIT 100MM DUCT | 27 |
| TC1279-155BKIT | YYDSC04640 | C RAIL MOUNTING KIT 220MM DUCT | 27 |
| TC1279-155CKIT | YYDSC04639 | C RAIL MOUNTING KIT 300MM DUCT | 27 |
| TC1279-155KIT | YYDSC04638 | 100/220MM LADDER RACK MNT KIT | 26 |
| TC1279-156 | YYDSC04740 | UNIVERSAL RADIUS GUIDE | * |
| TC1279-15A | YYDSC04382 | 220MM MOUNT BRACKET ASSEMBLY | 25 |
| TC1279-15WBT | YYDSC04637 | 220MM MOUNT BRACKET ASSEMBLY | 25 |
| TC1279-161KIT | YYDSC04636 | WALL MOUNT EXTEN.KIT 100&220MM | * |
| TC1279-16A | YYDSC04481 | 100MM MOUNT BRACKET ASSEMBLY | 25 |
| TC1279-16WBT | YYDSC04741 | 100MM MOUNT BRACKET ASSEMBLY | 25 |
| TC1279-170 | YYDSC04635 | MOUNTING BRACKET ADAPTOR SIEME | * |
| TC1279-171 | YYDSC04634 | MOUNT BRACKET 50MM UNI-STRUT | * |
| TC1279-178KIT | YYDSC04633 | 50MM FIBRE STORAGE LOOP OFFSET | 21 |
| TC1279-183KIT | YYDSC04632 | WALL & STRUT MOUNT BRKT KIT | * |
| TC1279-186KIT | YYDSC04878 | 100 X 50MM INLINE STORAGE KIT | 21 |
| TC1279-191KIT | YYDSC04631 | 220MM FIBRE STORAGE LOOP | 21 |
| TC1279-192KIT | YYDSC04630 | 100MM FIBRE STORAGE LOOP OFSET | 21 |
| TC1279-193 | YYDSC04879 | 300MM 90D DOWN ELBOW BODY | 14 |
| TC1279-193A | YYDSC04629 | 300MM ELBW 90D DOWN ASSEMBLY YELLOW | 14 |
| TC1279-195KIT | YYDSC04880 | 100MM FIBRE STORAGE LOOP OFFSET | 21 |
| TC1279-197KIT | YYDSC04628 | VERTICAL STRUT MOUNT KIT | * |
| TC1279-202KIT | YYDSC04383 | 100MM LADDER RACK MOUNT | * |
| TC1279-207KIT | YYDSC04627 | 220MM FIBRE STORAGE KIT INLINE | 21 |
| TC1279-208KIT | YYDSC04501 | 100MM FIBRE STORAGE KIT INLINE | 21 |
| TC1279-209KIT | YYDSC04626 | 50MM FIBRE STORAGE KIT INLINE | 21 |
| TC1279-21 | YYDSC04625 | 220MM DUCT BODY 2MTS LONG | 11 |
| TC1279-212KIT | YYDSC04623 | 50MM DUCT RADIUS GUIDE KIT | * |
| TC1279-218A | YYDSC04384 | 100MM BREAKOUT ADAPTOR ASSEMBLY | 15 |
| TC1279-21A | YYDSC04881 | 220MM DUCT & HINGED LID ASSEMBLY | 11 |
| TC1279-21ASN | YYDSC04447 | 220MM DUCT & SNAP ON LID ASSEMBLY | 11 |
| TC1279-21ASNМ | YYDSC04920 | 220MM DUCT & SNAP ON LID ASSEMBLY | 11 |
| TC1279-21M | YYDSC04704 | 220MM DUCT BODY 2MTS LONG | 11 |
| TC1279-223 | YYDSC04882 | 100 X 50MM DUCT BODY 2MTS LONG | 11 |
| TC1279-223A | YYDSC04883 | 100 X 50MM DUCT 7 HINGED LID 2MTS LONG | 11 |
| TC1279-223ASN | YYDSC04715 | 100 X 50MM DUCT & SNAP LID ASSEMBLY | 11 |
| TC1279-223SL | YYDSC04884 | 100 X 50MM SIDE SLOTTED DUCT | 11 |
| TC1279-223SLASN | YYDSC04885 | 100 X 50MM SLOTTED DUCT & SNAP LID | 11 |
| TC1279-223SLXA | YYDSC04742 | 100 X 50MM SLOT DUCT & LID ASSEMBLY | 11 |
| TC1279-224 | YYDSC04886 | 100 X 50MM TEE HORIZONTAL | 13 |
| TC1279-224A | YYDSC04711 | 100 X 50MM HORIZONTAL TEE ASSEMBLY | 13 |
| TC1279-226 | YYDSC04710 | 100 X 50MM JOINER | 12 |
| TC1279-227 | YYDSC04886 | 100 X 50MM ENDCAP | 22 |
| TC1279-228 | YYDSC04887 | 100 X 50MM INTRA-SUITE | 14 |
| TC1279-228A | YYDSC04888 | 100 X 50MM INTRA SUITE ASSEMBLY | 14 |
| TC1279-22SKIT | YYDSC04620 | LID 220MM SNAP-ON CUT TO 35MM KIT (10 PAIRS) | 17 |
| TC1279-22SKITA | YYDSC04619 | LID 220MM SNAP-ON CUT TO 35MM KIT (20 PAIRS) | 17 |
| TC1279-23 | YYDSC04618 | 100MM DUCT BODY 2MTS LONG | 11 |

| | | | |
|-----------------|------------|--|----|
| TC1279-230 | YYDSC04617 | 100 X 50MM SLOTTING TOOL ASSEMBLY | 28 |
| TC1279-231 | YYDSC04616 | CUTOUT TOOL ASSEMBLY | * |
| TC1279-231KIT | YYDSC04385 | CUTOUT TOOL KIT FOR 218A-232A | * |
| TC1279-232KIT | YYDSC04615 | 100 X 50MM BREAKOUT KIT | * |
| TC1279-234 | YYDSC04890 | 100 X 50MM CROSS CONNECT BODY | 13 |
| TC1279-234A | YYDSC04891 | 100 X 50MM CROSS CONNECT ASSEMBLY | 13 |
| TC1279-236A | YYDSC04723 | 100 X 50MM 90D DOWN ELBOW ASSEMBLY | 14 |
| TC1279-238 | YYDSC04892 | 100 X 50 TO 50 X 50MM ADAPTOR BODY | 20 |
| TC1279-238A | YYDSC04893 | 100 X 50 TO 50 X 50MM ADAPTOR ASSEMBLY | 20 |
| TC1279-23A | YYDSC04614 | 100MM DUCT & LID ASSEMBLY (HINGED) | 11 |
| TC1279-23ASN | YYDSC04448 | 100MM DUCT & SNAP ON LID ASSEMBLY | 11 |
| TC1279-23ASNМ | YYDSC04921 | 100MM DUCT & SNAP ON LID ASSEMBLY | 11 |
| TC1279-23M | YYDSC04476 | 100MM DUCT BODY 2MTS LONG | 11 |
| TC1279-23SL | YYDSC04613 | 100MM SLOTTED DUCT | 11 |
| TC1279-23SLA | YYDSC04612 | 100MM SLOTTED DUCT & LID ASSEMBLY | 11 |
| TC1279-23SLASN | YYDSC04611 | 100MM SLOTTED DUCT & SNAP LID | 11 |
| TC1279-240 | YYDSC04610 | 100 X 50 TO 100 X 100MM ADAPTOR | 20 |
| TC1279-240A | YYDSC04609 | 100 X 100 TO 100 X 50MM ADAPTOR ASSEMBLY | 20 |
| TC1279-246 | YYDSC04894 | 100 X 50MM 90D ELBOW UP BODY | 14 |
| TC1279-246A | YYDSC04895 | 100 X 50MM 90D UP ELBOW ASSEMBLY | 14 |
| TC1279-246R | YYDSC04896 | 100 X 50MM 90D ELBOW ASSEMBLY UP R/F | 14 |
| TC1279-248A | YYDSC04386 | 100MM SLOTLESS JOINER ASSEMBLY | 12 |
| TC1279-24SKIT | YYDSC04608 | LID 100MM SNAP-ON CUT TO 35MM KIT (10 PAIRS) | 17 |
| TC1279-24SKITA | YYDSC04607 | LID 100MM SNAP-ON CUT TO 35MM KIT (20 PAIRS) | 17 |
| TC1279-25 | YYDSC04387 | 220MM JOINER | 12 |
| TC1279-250A | YYDSC04388 | 220MM SLOTLESS JOINER ASSEMBLY | 12 |
| TC1279-251 | YYDSC04606 | 100MM ENDCAP SLOTLESS | 22 |
| TC1279-252 | YYDSC04605 | 220MM ENDCAP SLOTLESS MOULDING | 22 |
| TC1279-26 | YYDSC04604 | 50/44MM FLEX CONV.TUBE X 1MT | 23 |
| TC1279-269 | YYDSC04897 | 100 X 50MM ELBOW BODY HORIZONTAL | 13 |
| TC1279-269A | YYDSC04898 | 100 X 50MM ELBOW HORIZONTALK ASSEMBLY | 13 |
| TC1279-26Y | YYDSC04389 | 50/44 YELLOW CONV. TUBE X 1MT | 23 |
| TC1279-27 | YYDSC04390 | 100MM JOINER | 12 |
| TC1279-274 | YYDSC04603 | UNDER FLOOR MOUNTING BRACKET | * |
| TC1279-275 | YYDSC04602 | 300MM DUCT 2MTS LONG INC.SLOTS | 11 |
| TC1279-275A | YYDSC04924 | 300MM DUCT & LID ASSEMBLY(SLOTTED) | 11 |
| TC1279-275AM | YYDSC04703 | 300MM DUCT & LID ASSEMBLY(SLOTTED) | 11 |
| TC1279-275M | YYDSC04708 | 300MM DUCT 2MTS LONG INC. SLOTS | 11 |
| TC1279-276SKITA | YYDSC04749 | LID 300MM SNAP-ON CUT TO 35MM KIT (20 PAIRS) | 17 |
| TC1279-277 | YYDSC04601 | 300MM INTRASUITE BODY | 14 |
| TC1279-277A | YYDSC04391 | 300MM INTRASUITE ASSEMBLY | 14 |
| TC1279-279 | YYDSC04899 | 300MM TEE DUCT MOULDING | 13 |
| TC1279-279A | YYDSC04486 | 300MM HORIZONTAL TEE ASSEMBLY | 13 |
| TC1279-279IT | YYDSC04392 | 300MM ISLAND TEE ASSEMBLY | 13 |
| TC1279-281 | YYDSC04600 | 300/220MM REDUCER BODY | 20 |
| TC1279-281A | YYDSC04393 | 300/220MM REDUCER ASSEMBLY | 20 |
| TC1279-283 | YYDSC04900 | 300MM 45DEG ELBOW UP | 14 |
| TC1279-283A | YYDSC04719 | 300MM 45DEG ELBOW UP ASSEMBLY | 14 |

| | | | |
|-----------------|------------|--------------------------------------|----|
| TC1279-285 | YYDSC04901 | 300MM 45DEG ELBOW DOWN BODY | 14 |
| TC1279-285A | YYDSC04718 | 300MM 45D ELBOW DOWN ASSEMBLY | 14 |
| TC1279-287A | YYDSC04706 | 300MM SLOTLESS JOINER ASSEMBLY | 12 |
| TC1279-288 | YYDSC04498 | 300MM ENDCAP (SLOTLESS) YELLOW | 22 |
| TC1279-288A | YYDSC04394 | 300MM X 100MM END CAP ASSEMBLY | 22 |
| TC1279-29 | YYDSC04599 | 220MM 90D ELBOW BODY | 13 |
| TC1279-290B | YYDSC04902 | 100MM DUCT LID FOR SPEED DROP | 17 |
| TC1279-290C | YYDSC04903 | 220MM DUCT LID FOR SPEED DROP | 17 |
| TC1279-290D | YYDSC04904 | 300MM DUCT LID FOR SPEED DROP | 17 |
| TC1279-294 | YYDSC04597 | LARGE BREAKOUT RAMPOFF MOULDIN | * |
| TC1279-29-45 | YYDSC04596 | 220MM 45D ELBOW BODY HORIZONTAL | 13 |
| TC1279-29-45A | YYDSC04497 | 220MM 45D ELBOW ASSEMBLY HORIZONTAL | 13 |
| TC1279-297A | YYDSC04395 | 300MM MOUNTING BRACKET ASSEMBLY | 25 |
| TC1279-297AKIT | YYDSC04595 | HD MOUNT KIT WITH 2X1/2"X 1MT | 26 |
| TC1279-297BKIT | YYDSC04594 | HD MOUNT KIT 2X 5/8"X300MM LG | 26 |
| TC1279-297KIT | YYDSC04396 | 300MM DUCT MOUNT KIT FOR SCREW | 26 |
| TC1279-297WBT | YYDSC04905 | 300MM MOUNTING BRACKET ASSEMBLY | 25 |
| TC1279-298A | YYDSC04906 | 300MM ELBOW 90D BODY ASSEMBLY | 14 |
| TC1279-298KIT | YYDSC04593 | 300M ELBOW 90D.UP ASS.INC.LID | 14 |
| TC1279-29A | YYDSC04397 | 220MM 90D ELBOW ASSEMBLY HORIZONTAL | 13 |
| TC1279-300 | YYDSC04592 | 300MM X 300MM CROSS BODY | 13 |
| TC1279-300A | YYDSC04398 | 300MM X 300MM CROSS ASSEMBLY | 13 |
| TC1279-303A | YYDSC04591 | HEAVY DUTY SIDE C/LEVER BRKT. | 25 |
| TC1279-304 | YYDSC04753 | 300MM ELBOW 45DEG.HORIZONTAL. | 13 |
| TC1279-304A | YYDSC04754 | 300MM ELBOW 45DEG.HORIZONTAL. | 13 |
| TC1279-307ASL | YYDSC04399 | 100MM TOP OUTLET VERTICAL DROP | 17 |
| TC1279-307SLKIT | YYDSC04907 | TOP OUTLET 100MM VERTICAL KIT | 24 |
| TC1279-31 | YYDSC04590 | 100MM 90D ELBOW BODY HORIZON | 13 |
| TC1279-31-45 | YYDSC04589 | 100MM 45D ELBOW BODY HORIZONTAL | 13 |
| TC1279-31-45A | YYDSC04588 | 100MM 45D.HORIZONTAL.ELBOW ASSEMBLY | 13 |
| TC1279-315KIT | YYDSC04587 | 300MM DUCT FIBRE STORAGE KIT | 21 |
| TC1279-316A | YYDSC04400 | 300MM TO 220MM TEE ASSEMBLY | 13 |
| TC1279-31A | YYDSC04401 | 100MM 90D ELBOW ASSEMBLY HORIZONTAL | 13 |
| TC1279-320 | YYDSC04480 | 300MM JOINER YELLOW | 12 |
| TC1279-320KIT | YYDSC04705 | 300MM JOINER YELLOW INCC/NUTS | * |
| TC1279-327KIT | YYDSC04908 | ADAPTOR KIT 12"COMMSCOPE TO 300MM WB | 24 |
| TC1279-329 | YYDSC04585 | INTRA-SUITE BODY 200X200MM DROP | 14 |
| TC1279-329A | YYDSC04584 | INTRA-SUITE ASS.200X200MM DROP | 14 |
| TC1279-330 | YYDSC04583 | 220MM BREAKOUT ADAPTOR BODY | * |
| TC1279-330A | YYDSC04402 | 220MM BREAKOUT ADAPTOR ASSEMBLY | 15 |
| TC1279-331 | YYDSC04582 | 300 X 220MM CROSS BODY | 13 |
| TC1279-331A | YYDSC04403 | 300 X 220MM CROSS ASSEMBLY | 13 |
| TC1279-350 | YYDSC04581 | CONVOLUTED TUBE 50MM SPLIT 1MT | 23 |
| TC1279-36 | YYDSC04757 | H.D.MOUNT BRACKET FOR SCREWED | * |
| TC1279-370KIT | YYDSC04580 | LADDER RACK MOUNT BRKT.KIT | 20 |
| TC1279-379 | YYDSC04579 | 300MM BREAKOUT ADAPTOR BODY | * |
| TC1279-379A | YYDSC04577 | 300MM BREAKOUT ADAPTOR ASSEMBLY | 15 |
| TC1279-37A | YYDSC04576 | 220MM 90D ELBOW ASSEMBLY UP/DOWN | 14 |

| | | | |
|---------------|------------|---|----|
| TC1279-387 | YYDSC04909 | 300MM HORIZONTAL 90DEG.ELBOW BODY | 13 |
| TC1279-387A | YYDSC04489 | 300MM HORIZONTAL 90DEG ELBOW ASSEMBLY | 13 |
| TC1279-393 | YYDSC04575 | 100 TO 220MM HOR.BRANCH TEE BODY | 13 |
| TC1279-393A | YYDSC04574 | 100 TO 220MM HOR.BRANCH TEE ASSEMBLY | 13 |
| TC1279-396 | YYDSC04573 | 300 TO 100MM CROSS BODY | 13 |
| TC1279-396A | YYDSC04572 | 300 TO 100MM CROSS ASSEMBLY | 13 |
| TC1279-398 | YYDSC04571 | 300 TO 100MM TEE BODY | 13 |
| TC1279-398A | YYDSC04570 | 300 TO 100MM TEE ASSEMBLY | 13 |
| TC1279-39A | YYDSC04496 | 100MM 90D UP/DOWN ELBOW NO LID | 14 |
| TC1279-406 | YYDSC04404 | STRAIGHT DUCT, 600MM X 100MM X 2M | 11 |
| TC1279-406A | YYDSC04569 | 600MM DUCT & LID | 11 |
| TC1279-408 | YYDSC04405 | 600 X 300MM REDUCER BASE | 20 |
| TC1279-408A | YYDSC04568 | 600 X 300MM REDUCER ASSEMBLY | 20 |
| TC1279-410A | YYDSC04406 | 600MM JOINER ASSEMBLY | 12 |
| TC1279-411A | YYDSC04567 | 600 X 90MM DEG. HORIZONTAL ELBOW ASSEMBLY | 13 |
| TC1279-411KIT | YYDSC04566 | 90 DEG. HORIZONTAL ELBOW BODY W/O LIDS | 13 |
| TC1279-412 | YYDSC04407 | 600 X 600MM TEE BASE | 13 |
| TC1279-412A | YYDSC04565 | 600 X 600MM TEE ASSEMBLY | 13 |
| TC1279-414 | YYDSC04408 | 600MM 45 DEGREE HORIZONTAL ELBOW BASE | 13 |
| TC1279-414A | YYDSC04564 | 600MM 45 DEGREE HORIZONTAL ELBOW ASSEMBLY | 13 |
| TC1279-416 | YYDSC04409 | 600MM CROSS BODY | 13 |
| TC1279-416A | YYDSC04563 | 600MM CROSS BODY ASSEMBLY | 13 |
| TC1279-41A | YYDSC04758 | DROP OFF ASSEMBLY | 19 |
| TC1279-41KIT | YYDSC04410 | DROP OFF KIT | 19 |
| TC1279-425 | YYDSC04561 | 600MM 45 DEG. DOWN ELBOW BODY | 14 |
| TC1279-425A | YYDSC04560 | 600MM 90 DEG.DOWN ELBOW W/JOINER ASSEMBLY | 14 |
| TC1279-425KIT | YYDSC04559 | 600MM 90 DEG. DOWN ELBOW BODY W/O LID | 14 |
| TC1279-427 | YYDSC04558 | 600MM 45 DEG UP ELBOW BODY | 14 |
| TC1279-427A | YYDSC04557 | 600MM 90 DEG UP ELBOW W/JOINER ASSEMBLY | 14 |
| TC1279-427KIT | YYDSC04556 | 600MM 90 DEG UP ELBOW BODY W/O LID | 14 |
| TC1279-435 | YYDSC04555 | 600MM ENDCAP | 22 |
| TC1279-437A | YYDSC04910 | 600MM 45 DEG.DOWN ELBOW ASSEMBLY | 14 |
| TC1279-438A | YYDSC04411 | 600MM MOUNTING BRACKET ASSEMBLY | 26 |
| TC1279-43KIT | YYDSC04759 | HINGE KIT | * |
| TC1279-45 | YYDSC04554 | 220MM BODY ELBOW 30DEG HORIZONTAL. | 13 |
| TC1279-452A | YYDSC04412 | 100MM BREAKOUT DROP DOWN ASSEMBLY | 15 |
| TC1279-452KIT | YYDSC04494 | 100MM BREAK-OUT KIT 90 DEGREES | 16 |
| TC1279-454A | YYDSC04413 | 220MM BREAKOUT DROP DOWN ASSEMBLY | 15 |
| TC1279-454KIT | YYDSC04553 | 220MM BREAK-OUT KIT 90 DEGREES | 16 |
| TC1279-456 | YYDSC04414 | 100MM ENDCAP WITH 88MM ADAPTOR | 22 |
| TC1279-457 | YYDSC04552 | 220MM ENDCAP WITH 2X88MM PORTS | 22 |
| TC1279-458 | YYDSC04415 | CONVOLUTED TUBE 88MM OD 2MT LG | 23 |
| TC1279-458-1 | YYDSC04551 | CONVOLUTED TUBE 88MM OD 1MT LG | 23 |
| TC1279-459A | YYDSC04911 | 100 X 50MM SLOTLESS JOINER ASS | 12 |
| TC1279-45A | YYDSC04922 | 220MM ELBOW ASS.30D HORIZONTAL | 13 |
| TC1279-45A | YYDSC04550 | 220MM ELBOW ASS.30D HORIZONTAL | 13 |
| TC1279-47 | YYDSC04549 | 100MM CENTERING ADAPTOR BODY | 13 |
| TC1279-471 | YYDSC04548 | CONVOLUTED TUBE 75MM OD 2MT LG | 23 |

| | | | |
|---------------|------------|---|----|
| TC1279-471-1 | YYDSC04547 | CONVOLUTED TUBE 75MM OD 1MT LG | 23 |
| TC1279-472KIT | YYDSC04760 | 100MM TO COMMSCOPE 6" RH ADAPTOR KI | 24 |
| TC1279-473KIT | YYDSC04761 | 100MM TO COMMSCOPE 6" LH ADAPTOR KI | 24 |
| TC1279-479 | YYDSC04912 | CONVOLUTED TUBE 88MM/OD 1150LG | 23 |
| TC1279-47A | YYDSC04546 | 100MM 30D ELBOW ASS.HORIZONTAL | 13 |
| TC1279-47A | YYDSC04546 | 100MM 30D ELBOW ASS.HORIZONTAL | 13 |
| TC1279-480A | YYDSC04913 | 75MM CONV. TUBE + 2 ADAP. TUBE | 23 |
| TC1279-483A | YYDSC04416 | CUTOUT JIG ASSEMBLY | 30 |
| TC1279-485KIT | YYDSC04545 | 300MM INLINE STORAGE LOOP | 21 |
| TC1279-486KIT | YYDSC04914 | 220MN TO PANDUIT 6"RH ADAP.KIT | 24 |
| TC1279-487KIT | YYDSC04915 | 220MN TO PANDUIT 6"LH ADAP.KI | 24 |
| TC1279-492KIT | YYDSC04916 | 300MM TO PANDUIT 12" ADAP. KIT | 24 |
| TC1279-494KIT | YYDSC04917 | CONVOLUTED TUBE ADAPTOR KIT | 23 |
| TC1279-50 | YYDSC04544 | CUT OUT TOOL FOR 100-220 DUCT | 28 |
| TC1279-500 | YYDSC04543 | 100MM FOOT OPERATING SLOT TOOL | * |
| TC1279-500KIT | YYDSC04417 | 100MM FOOT OPER.SLOT TOOL KIT | 28 |
| TC1279-501 | YYDSC04542 | 100MM HYDR. HAND HELD SLOT TOOL | 29 |
| TC1279-501KIT | YYDSC04418 | 100MM HAND HYDR. SLOT TOOL KIT | 29 |
| TC1279-502M | YYDSC04541 | 50MM HAND HYDR. SLOT TOOL | * |
| TC1279-50-3 | YYDSC04540 | FIBRE SPREADER | 31 |
| TC1279-50KIT | YYDSC04419 | CUT OUT KIT (INC.WRENCH+SPRDR) | * |
| TC1279-51 | YYDSC04467 | 100MM SLOTTING TOOL ASSEMBLY | 28 |
| TC1279-51A | YYDSC04420 | SLOT TOOL & WRENCH KIT 100+220 | 31 |
| TC1279-51KIT | YYDSC04500 | SLOT & MITRE KIT | * |
| TC1279-53 | YYDSC04539 | CONVOLUTED TUBE FLEXIBLE BLACK 44MM ID x 2MT LONG | 23 |
| TC1279-531ASL | YYDSC04421 | 50MM TOP OUTLET VERTICAL DROP | 17 |
| TC1279-53Y | YYDSC04422 | CONVOLUTED TUBE YELLOW 44MM ID X 2MT | 23 |
| TC1279-54 | YYDSC04538 | 20/25MM ID/OD CONV.TUBE BLK.2M | 23 |
| TC1279-56 | YYDSC04423 | 220MM END COVER YELLOW | 22 |
| TC1279-57 | YYDSC04424 | 100MM END COVER | 22 |
| TC1279-570KIT | YYDSC04537 | DUCT CABLE SEPERATOR KIT | * |
| TC1279-571KIT | YYDSC04536 | SUPPORT BRACKET SUITS 100 x 100MM | * |
| TC1279-572KIT | YYDSC04535 | SUPPORT BRACKET SUITS 220 x 100MM | * |
| TC1279-57B | YYDSC04534 | 100MM END COVER 2/32MM TABS | 22 |
| TC1279-57C | YYDSC04425 | 100MM END COVER 2X50mm HOLES FOR CONV. TUBE | 22 |
| TC1279-57D | YYDSC04426 | 100MM DUCT END SUPPORT BRACKET | 22 |
| TC1279-59 | YYDSC04533 | MOUNT BRACKET 40MM UNI-STRUT | * |
| TC1279-602A | YYDSC04427 | ASSEMBLY SPILLOUT STRAIGHT | 18 |
| TC1279-604KIT | YYDSC04428 | KIT TO CUT SPILLOUT HOLE | 30 |
| TC1279-609A | YYDSC04429 | ASSEMBLY SPILLOUT 90 DEG. | 18 |
| TC1279-61 | YYDSC04532 | 220/220MM CROSS CONNECTOR BODY | 13 |
| TC1279-61A | YYDSC04430 | 220/220MM CROSS CONNECTOR ASSEMBLY | 13 |
| TC1279-63 | YYDSC04531 | 100MM INTRA-SUITE BODY | 14 |
| TC1279-63A | YYDSC04431 | 100MM INTRA-SUITE ASSEMBLY | 14 |
| TC1279-63R | YYDSC04495 | 100MM INTRA-SUITE RETRO FIT ASSEMBLY | 14 |
| TC1279-64 | YYDSC04762 | LID FOR TC1279-63A | * |
| TC1279-65 | YYDSC04530 | 220 X 100MM CROSS/CON BODY | 13 |
| TC1279-65A | YYDSC04432 | 220/100MM CROSS CONNECTOR ASSEMBLY | 13 |

| | | | |
|----------------|------------|---|----|
| TC1279-68 | YYDSC04529 | 38MM CONVOLUTE TUBE | 23 |
| TC1279-71 | YYDSC04528 | 100/100MM CROSS/CON BODY | 13 |
| TC1279-71A | YYDSC04433 | 100/100MM CROSS CONNECTOR ASSEMBLY | 13 |
| TC1279-73 | YYDSC04434 | 50MM JOINER | 12 |
| TC1279-75 | YYDSC04527 | 50MM TEE BODY | 13 |
| TC1279-75A | YYDSC04435 | 50MM TEE ASSEMBLY | 13 |
| TC1279-77 | YYDSC04526 | 50MM 90D ELBOW BODY HORIZONTAL | 13 |
| TC1279-77-30 | YYDSC04525 | 50MM 30D ELBOW BODY HORIZONTAL | 13 |
| TC1279-77-30A | YYDSC04524 | 50MM 30D ELBOW ASSEMBLY HORIZONTAL | 13 |
| TC1279-77-45 | YYDSC04523 | 50MM 45D ELBOW BODY HORIZONTAL | 13 |
| TC1279-77-45A | YYDSC04522 | 50MM 45D ELBOW ASSEMBLY HORIZONTAL | 13 |
| TC1279-77A | YYDSC04436 | 50MM 90D ELBOW ASSEMBLY HORIZONTAL | 13 |
| TC1279-78KIT | YYDSC04521 | MOUNT BRACKET KIT | * |
| TC1279-81 | YYDSC04520 | 50MM DUCT BODY 2MTS LONG | 11 |
| TC1279-81A | YYDSC04437 | 50MM DUCT & SHORT LIDS ASSEMBLY | 11 |
| TC1279-81SL | YYDSC04519 | 50MM SLOTTED DUCT | 11 |
| TC1279-81SLA | YYDSC04518 | 50MM SLOTTED DUCT & SHORT LIDS | 11 |
| TC1279-81SLXA | YYDSC04438 | 50MM SLOTTED DUCT & LONG LID | 11 |
| TC1279-81XA | YYDSC04439 | 50MM DUCT & LONG LID ASSEMBLY | 11 |
| TC1279-85BLK | YYDSC04517 | 50MM SQ.CONV TUBE BLACK 350LG. | 23 |
| TC1279-85KIT | YYDSC04516 | 50MM SQ/OPEN FLEX TUBE KIT | 23 |
| TC1279-85YEL | YYDSC04440 | 50MM SQ.CONV TUBE YELLOW 350 | 23 |
| TC1279-87 | YYDSC04515 | 50MM 90D ELBOW BODY DOWN | 14 |
| TC1279-87-30 | YYDSC04514 | 50MM 30D ELBOW BODY DOWN | 14 |
| TC1279-87-30A | YYDSC04513 | 50MM 30D ELBOW DOWN ASSEMBLY | 14 |
| TC1279-87-45 | YYDSC04512 | 50MM 45D ELBOW BODY DOWN EXT | 14 |
| TC1279-87-45A | YYDSC04511 | 50MM 45D ELBOW ASSEMBLY DOWN EXT | 14 |
| TC1279-87A | YYDSC04483 | 50MM 90D ELBOW DOWN ASSEMBLY | 14 |
| TC1279-87R | YYDSC04510 | 50MM 90D ELBOW DOWN R/FIT | 14 |
| TC1279-89A | YYDSC04918 | 50MM SQUARE DROPOFF ASSEMBLY | 19 |
| TC1279-89KIT | YYDSC04441 | 50MM SQUARE DROPOFF KIT | 19 |
| TC1279-91 | YYDSC04509 | 100/50MM ADAPTOR BODY | 20 |
| TC1279-91A | YYDSC04508 | 100MM TO 50MM ADAPTOR ASSEMBLY | 20 |
| TC1279-93 | YYDSC04507 | 50MM BREAKOUT BODY | * |
| TC1279-93A | YYDSC04469 | 50MM BREAKOUT ASSEMBLY | 15 |
| TC1279-93KIT | YYDSC04442 | 50MM BREAKOUT KIT INC.D/ELBOW | 19 |
| TC1279-DCU600 | YYDSC04504 | DUCT CLAMP UNIVERSAL FOR 600MM DUCTING SET 10PC | 25 |
| TC1279-DCUM-10 | YYDSC04443 | UNIVERSAL DUCT CLAMP FOR 100/220/300MM SET 10PC | 25 |
| TC1279-DCUM-6 | YYDSC04444 | DUCT CLAMP UNIVERSAL FOR 600MM DUCTING SET 10PC | 25 |
| TC1279-MITRE | YYDSC04445 | MITRE BOX ASSEMBLY 100 220 300MM | 30 |
| TC1279-TKIT | YYDSC04446 | TOOL KIT SLOT.CUTOUT & MITRE | * |

*Available on request. Please contact connectivity.solutions@prysmian.com.



Europe

Prysmian SpA

Via Chiese 6
20126 Milano
Italy

South America

Prysmian Brazil

Av. Pirelli
1.100 - Sorocaba
Brazil

North America

Prysmian North America HQ

4 Tesseneer Road
Highland Heights
KY 41076

Asia

Singapore Cables Manufactures PTE. LTD.

No 20. Jurong Port Road,
Jurong Town, Singapore
619094

Contact us:

connectivity.solutions@prysmian.com

www.prysmian.com

Follow us

