

**Prysmian**  
Group  
**INSTALLATION INSTRUCTION**

**OAsys® INTERNAL PLANT**

**2 DOOR INTERNAL / EXTERNAL TERMINATION BOX (GENERIC)**

For general installation of 48F to 144F boxes



**Description**

- Provides the termination of an optical cable of between 48 fibres and 144 fibres onto an adapter panel. SC, FC, LC, E2000 and ST connectors can be accommodated.
- Supplied with single element splice trays. The box can be supplied with splice trays for either heat shrink or crimp splice protectors.
- Suitable for both internal and external use. The box is rated to IP66.
- The box has four cable entry ports for input cables of up to 24mm in diameter. Input cables are secured and sealed into the box using heat shrinks.
- Output patch cords or cables exit the box through a 40mm plastic cable gland. The gland can be used to secure a 40mm diameter corrugated tube. The corrugated tube is sold separately in lengths required by the customer. Please refer to additional items.
- Each half of the box has its own lockable cover to prevent unauthorised access.
- Standard colour is RAL7035.

**Tools and Additional Items Required**

<b>Additional Items Required:</b>	<b>Prysmian Part No.</b>
Heatshrink Splice Protectors (pk 50)	XPESC00053
<b>Optional Items:</b>	<b>Prysmian Part No.</b>
Corrugated Tube-2m / 5m / 10m:	XCPSC00915/ 916/ 917
Patch Cords	Refer to datasheet: AC004
<b>Tools:</b>	Electric Masonary Drill with 12mm Masonary Drill Bit Spirit Level 13mm Socket / Spanner Cable Prep Tools (Stripper/Heat Gun/Temp. Resistant Tape) Splicing Machine Small Flat Bladed Screwdriver PPE (i.e Safety Glasses / Ear Protection / Dust Mask)

**Component Parts (pictures not to scale)**

<b>1 2 Door Termination Box Assy</b>	<b>Qty 1</b>	<b>2 Installation Kit</b>	<b>Qty 1</b>	<b>3 Other Items</b>	<b>Qty 2</b>
				Keys (2 Pairs)	

**Prysmian**  
Group  
**INSTALLATION INSTRUCTION**

**Installation**

**Step 1**



**IF THE UNIT IS TOO HEAVY SEEK ADDITIONAL HELP TO AVOID INJURY.**

- 0-96F: Mark the 2 side hole centres:  
0-48F box: approx. 427mm  
49-96F box: approx. 477mm
- 97-144F: Mark 2 top hole centres:  
97-144F box: approx. 529mm
- Mark the wall where the first wall plug will be positioned. Using the spirit level draw a line across the wall and then measure out the horizontal distance.
- Using 12mm masonry drill piece and drill both holes so that they are 10mm deeper than the wall plug. Approx. depth: 70mm
- *Note: Wall plugs for masonry walls only. Always use safety Glasses, Ear Protection and Dust Masks.*

**Prysmian**  
Group  
**INSTALLATION INSTRUCTION**

**Installation**

**Step 2**



- Insert the wall plugs into the holes.
- Hold the unit up against the wall and screw both fastening bolts 50% into the wall plugs using a 13mm Socket Set.
- Using the pencil mark the remaining fixing positions. Remove the unit off the wall. Follow Step 1 for the remaining fixing position.
- Hold the unit up against the wall and screw all the fastening bolts fully into the wall plugs using a 13mm Socket Set.
- For the 144F version hang the unit on the top fixings and then fit the side fixings.

**Prysmian**  
Group  
**INSTALLATION INSTRUCTION**

**Installation**

**Step 3**

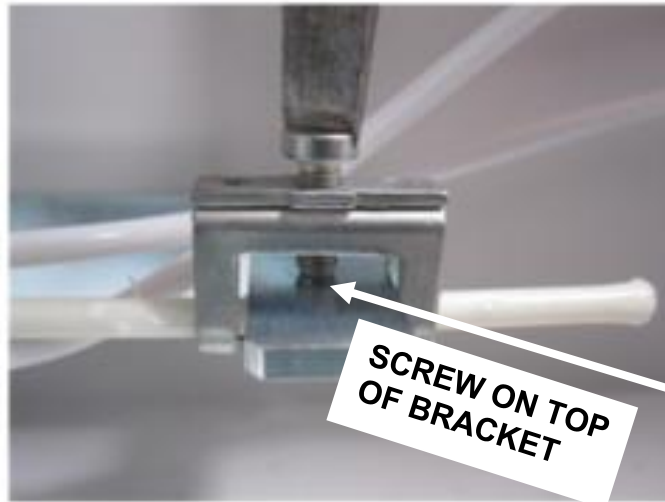


- Prepare the cable as required.
- If the cable has a Central Strength Member (CSM) then cut it to 70mm from the cable butt.
- Feed one of the heat shrinks from within the heat shrink kit onto the cable.

**Prysmian**  
Group  
**INSTALLATION INSTRUCTION**

**Installation**

**Step 4**



- When the cable is prepared, and heat shrink has been slid over the cable insert the cable through the cable inlet and secure in position using a CSM clamp. Tighten with the flat bladed screwdriver.
- Ensure that the screw does not bite into the CSM. The CSM should be underneath the bracket and the screw should act on the top of the bracket.

**Prysmian**  
Group  
**INSTALLATION INSTRUCTION**

**Installation**

**Step 5**

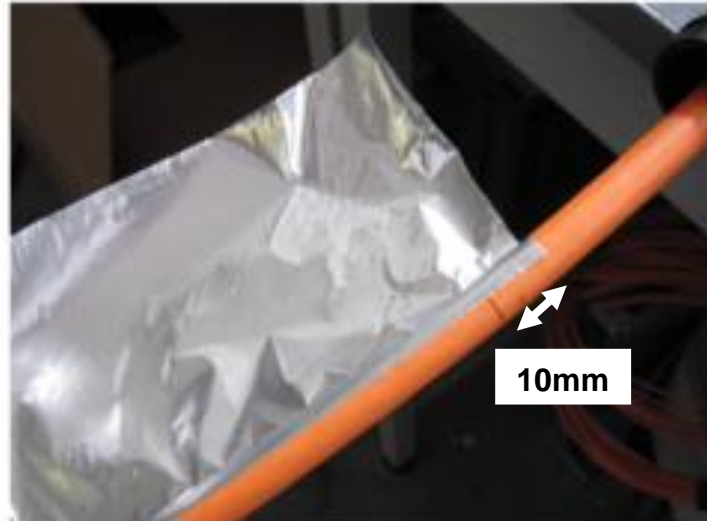


- Slide the heat shrink up the cable. Mark with a pen the end of the heat shrinks.
- Slide the heat shrink back down the cable.

**Prysmian**  
Group  
**INSTALLATION INSTRUCTION**

**Installation**

**Step 6**



- Take the foil from the heat shrink kit and wrap it around the cable 10mm up from the line drawn in Step 5. This protects the cable when using the heat gun. Wrap it around 1.5 times and then trim off the excess.
- Take a screwdriver and use the shaft to remove any creases.

**Prysmian**  
Group  
**INSTALLATION INSTRUCTION**

**Installation**

**Step 7**



- Roughen the external sheath of the cable above the foil using the sandpaper found in the heat shrink kit. This provides a key for the heat shrink to bind to.
- It is important that the outer sheath of the cable is roughened around the whole cable.



**Step 8**

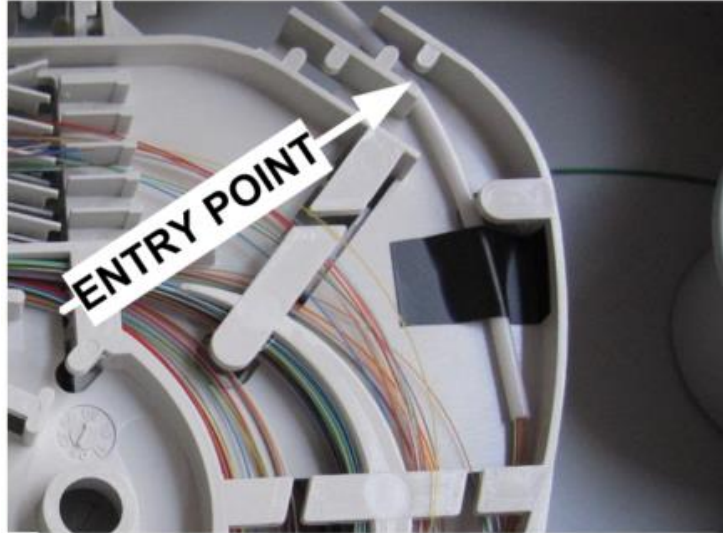


- Slide the heat shrink up the cable and over the cable inlet device. It is important that the heat shrink is slid so that it touches the outer case of the product.
- Using a heat gun, heat the heat shrink so that it shrinks onto the cable. The heat shrink can shrink from 45mm to 12mm so it will cover a wide variety of cables.
- The heat shrink is fully shrunk and has reached temperature when the particles on the heat shrink disappear.
- For further cables repeat Steps 3 to 8.

**Prysmian**  
Group  
**INSTALLATION INSTRUCTION**

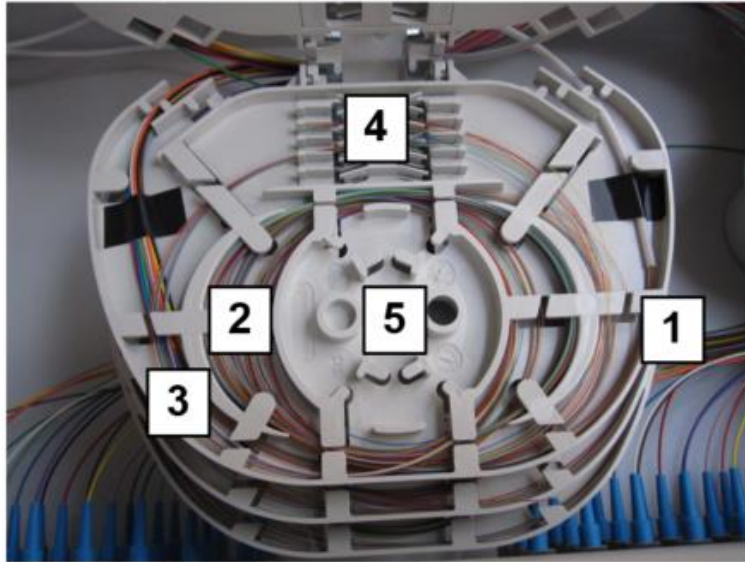
**Installation**

**Step 9**



- Remove the splice tray cover.
- Route the fibre onto the trays observing the patch panel numbering.
- If routing the elements secure them with a piece of temperature resistant tape as shown.

**Step 10**



- Route the fibres around the outside (1). Then pass them into the central storage area (2).
- Wind the fibre loosely around the central storage area. Route your selected fibre to the splice bay for splicing (3 / 4).
- If some fibres are not required, they can be stored in the centre of the splice tray for use later (5).

**Prysmian**  
Group  
**INSTALLATION INSTRUCTION**

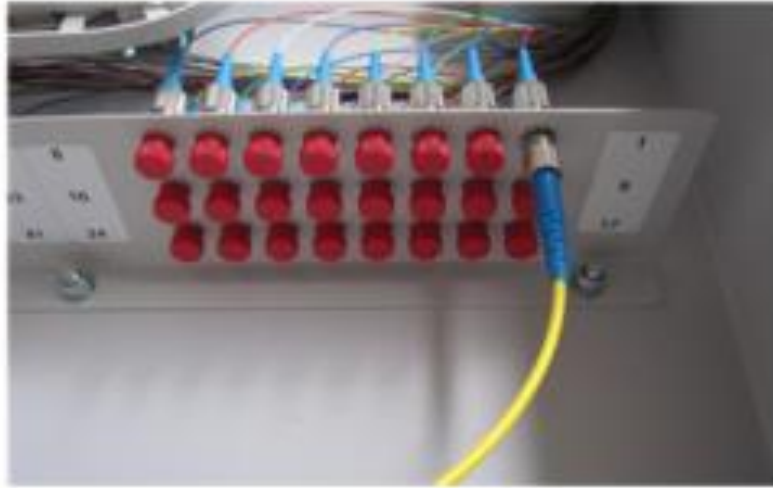
**Installation**

**Step 11**



- Check that fibres are free and that they have not become obstructed or caught.
- Close the splice trays.
- Replace the splice tray cover.

**Step 12**



**CLEAN BEFORE YOU CONNECT**

**ALL FIBRE CONNECTORS AND ADAPTORS TO BE CLEANED USING APPROVED LOCAL PRACTICE BEFORE MATING. FAILURE TO CLEAN MAY RESULT IN POOR SIGNAL PERFORMANCE AND PERMANENT DAMAGE TO CONNECTOR END FACES.**

- To connect the patch cords, work through the right-hand side opening.
- Remove the dust cap. For FC align the keyway on the adaptor with the keyway on the adaptor. Make the connection and tighten the sleeve.
- For ST align the bayonet then push and twist.
- For SC, LC and E2000 align the keyway and slide into position.

**Prysmian**  
Group  
**INSTALLATION INSTRUCTION**

**Installation**

**Step 13**



- Route the patch cord through the cable gland at the bottom.

### Blanking Additional Cable Inputs



- If you wish to block off the cable inlets you will require additional heat shrinks (sold separately-contact Prysmian).

### Fitting Output Trunking

- The output trunking is purchased separately.
- Loosen the gland nut and push the end of the trunking into the gland body.
- Tighten the gland nut to hold the trunking in place.

### NOTES:

*Please note this installation guide has been written showing loose tube multi fibre. The steps within this document are applicable to all other supported cable types.*

*See Prysmian Datasheets for more details: WM037 Two Door Termination Box - Up to 48f  
WM039 Two Door Termination Box - Up to 144f*

Copyright Prysmian Group - 2022 You may not copy, reprint, or reproduce in any form the content, either wholly or in part, of this Installation Guide, without the written permission of the copyright owner. Specifications are for product as supplied by Prysmian Group: any modification or alteration afterwards of product may give different result. The information is believed to be correct at the time of issue. Prysmian Group reserves the right to amend the information within this Installation Guide without prior notice. This Installation Guide may include inaccuracies, omissions of content and of information and is not contractually valid unless specifically authorised by Prysmian Group. Property of Prysmian Group UK - Uncontrolled when printed Prysmian Cables & Systems Limited, Chickenhall Lane, Eastleigh, Hampshire, SO50 6YU, United Kingdom.

**PRYSMIAN HELPLINE: + 44 (0) 7816191633**  
[connectivity.help@prysmiangroup.com](mailto:connectivity.help@prysmiangroup.com)