

OAsys® INTERNAL PLANT
OPTICAL CONSOLIDATION RACK 1A (OCR1A)
Part Number: XPFSC00040 BT Item Code: 050640

Description	Tools & Additional Items Required	
<p>OPTICAL CABLE TERMINATION & CONSOLIDATION RACK</p> <p>Supplied in “flat pack” format to ease handling. Easily assembled near point of installation by one person, for subsequent positioning in suite M12 fixing points provided in Top Frame. Provision for fixing to suitable floor.</p> <p>REQUIRED SPACE ENVELOPE: 900 mm x 300 mm x2200 mm (W x D x H).</p> <p>PLEASE READ THESE INSTRUCTIONS BEFORE BUILDING THE OCR.</p>	Additional Items Required:	<p>Prysmian Part No BT Item Code</p> <p>Optical Consolidation Sub Rack 1A XPFSC00041 050641</p>
	Fixings: (NOT SUPPLIED)	<p>2 off M12 x 50 mm hexagonal bolt</p>
	<p>Top Frame to suite ironwork fixings</p> <p>Suitable floor</p>	<p>4 off M12 nuts</p> <p>2 off</p>

Tools:	10- & 19-mm A/F Spanner
	Pozi Drive Screwdrivers 2 & 3
	7 mm Dia. Masonry Drill




Prysmian
Group
INSTALLATION INSTRUCTION

Component Parts (pictures not to scale)

1. Base Frame (XCRSG00042) Qty: 1	2. Rear Mounting Uprights (XCRSG00021/2) Qty: 2	3. Top Frame (XCRSG00023) Qty: 1
		
4. Right Hand Side Panel (XCRSG00044) Qty: 1	5. Cable Breakout Assembly (XCRSG00079) Qty: 1	6. Left Hand Side Panel (XCRSG00043) Qty: 1
		
7. Rear Panel Assembly (XCRSG00067) Qty: 1	8. Upper Rear Panel (XCRSG00045) Qty: 1	9. Hydra Guide Assembly (XCRSG00070) Qty: 1
		

Prysmian
Group
INSTALLATION INSTRUCTION

Component Parts (pictures not to scale)

10. Splicing M/C Support Shelf (XCRSG00047) Qty: 1	11. Right Hand Door (XCRSG00051) Qty:1	12. Left Hand Door (XCRSG00049) Qty:1
		
13. M6 x 20mm Hex. Head Screw Qty: 4	14. M6 Plain Nut Qty: 4	15. M6 x 12mm Pozi Pan Head Qty: 12
16. 6mm White Push Fit Rivets Qty: 13	17. M4 x 4mm Pozi Pan Head Screw Qty: 25	18. M5 x 12mm CSK Head Pozi. Qty: 12
19. M6 x 40mm Cap Head Screw Qty: 2	20. Sheets of Self-adhesive Labels Qty: 3	21. CBO Fibre Storage Key Qty: 4
22. 48mm x 5mm diameter tube Qty: 50	23. Instruction Wallet	

OCR ASSEMBLY

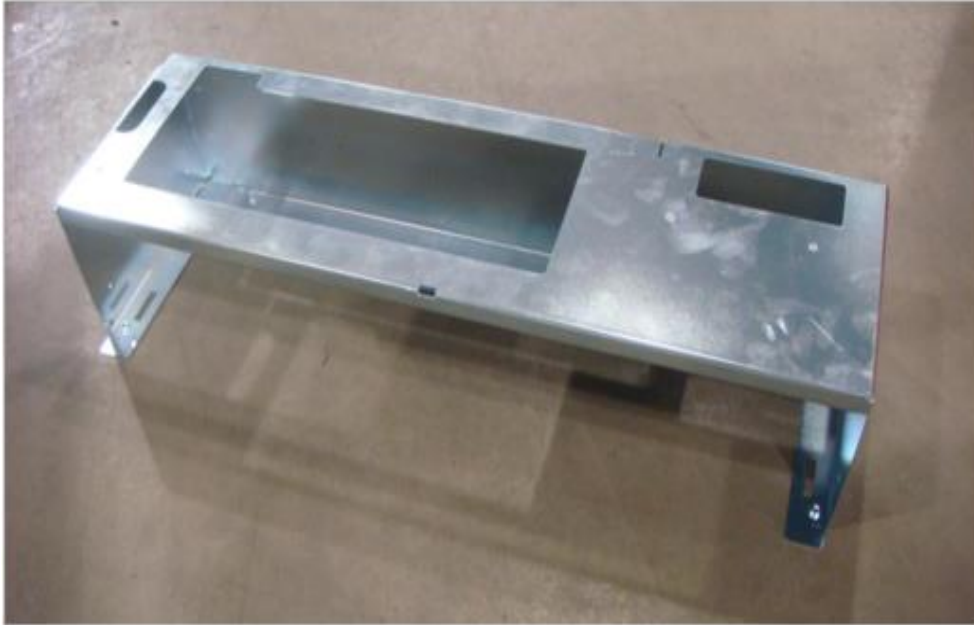
Step 1



- Position the Base Frame **(1)** upside down (with the rectangular cut outs facing the floor) and insert the 4 M6 x 20mm Hex. Head screws **(13)** into the 4 threaded holes.
- Loosely hand tighten fully home.
- Determine the centreline of the suite and final fixing position for the OCR1A
- Turn the Base Frame over and place it in its final installation position.
- Using a Spirit Level check for level left to right and back to front and adjust the 4 Hex. Head bolts as necessary to ensure the Base Frame is level, fit an M6 nut **(14)** on each bolt and tighten down onto the Base Frame with 10mm AF Spanner.
- Mark the floor through the two 8mm dia. holes for the floor fixing positions.

OCR ASSEMBLY

Step 2



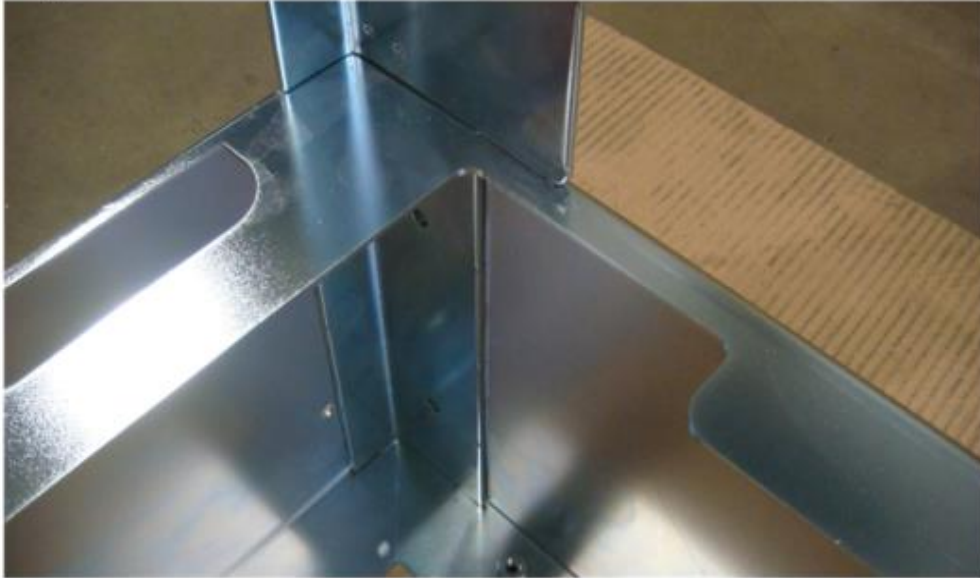
IDENTIFY A SAFE WORKING POSITION AWAY FROM OTHER OPERATORS.

WHERE POSSIBLE THE OCR 1 BUILD SHOULD BE STARTED SUCH THAT THE REAR OF THE RACK IS APPROXIMATELY 0.5 M AWAY FROM A VERTICAL SURFACE.

- Position the Base Frame **(1)** on the floor with the rectangular cut outs facing upwards.

OCR ASSEMBLY

Step 3



- Take the Left Hand Upright **(2)** and slide into the ‘L’ shaped slot on the left of the Base Frame **(1)**.
- Push down until the Left-Hand Upright keys into the bottom of the Base Frame.
- **TIP** the end with the long cut out and two holes fits into the Base Frame.
- Insert two M6 x 12mm Pozi Pan Head screws **(15)** through the upright and into the Base Frame.
- DO NOT fully tighten currently.
- **TIP** If the screws are difficult to fit then the upright is not seated correctly.

OCR ASSEMBLY

Step 4



- Take the **Right** Hand Upright **(2)** and slide into the 'L' shaped slot on the right of the Base Frame **(1)**.
- Push down until upright keys into the bottom of the Base Frame.
- **TIP** the end with the long cut out and two holes fits into the Base Frame.

OCR ASSEMBLY

Step 5



- Insert two M6 x 12mm Pozi Pan Head screws **(15)** through the upright and into the Base Frame.
- DO NOT fully tighten currently.
- **TIP** If the screws are difficult to fit then the upright is not seated correctly.

OCR ASSEMBLY

Step 6



The following operations will require the user to work approx. 2m from the floor.

Safe working practices MUST be followed.

Ensure that no persons are standing behind the rack during the following operations.

Secure the rack to prevent it from falling over if necessary.

- Locate the Top Frame (3) over the Mounting Rails.

OCR ASSEMBLY

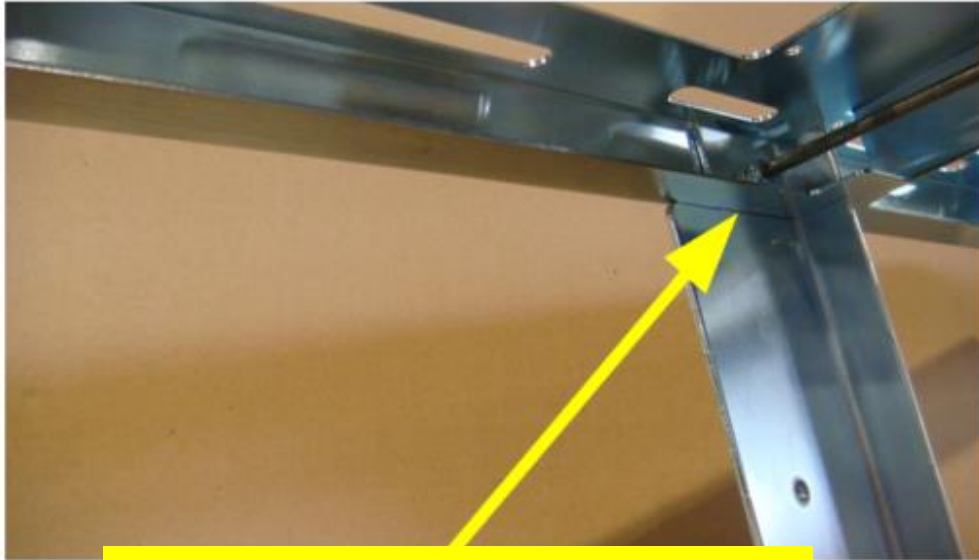
Step 7



- Secure the Left hand Upright using an M6 x 12mm Pozi Pan Head screws **(15)**. Fit the screws from the front and fully tighten using a No.3 Pozi-drive screwdriver.
- **TIP** If the screws are difficult to fit then the upright is not seated correctly.

OCR ASSEMBLY

Step 8



Upright flush with this face, no visible gap.

- Secure the Right Hand Upright using an M6 x 12mm Pozi Pan Head screws **(15)**. Fit the screws from the front and fully tighten using a No.3 Pozi-drive screwdriver.
- **FULLY TIGHTEN** the 4 screws in the Base Frame.

OCR ASSEMBLY

Step 9



- Offer the Right-Hand Side Panel (RHSP) (4) up to the right-hand side of the rack.
- Slide it into position ensuring that the 6 large holes line up (4 at the bottom and 2 at the top).
- Select the white push fit rivet (16) and detach the head from the body.
- Push the body through the RHSP until the head of the rivet body is flush with the panel surface.
- Push the head of the rivet through the rivet body and push firmly to engage the rivet. The rivet is engaged when the head is flush with the body and on the inside the 4 legs are splayed.

TIP: insert the top two rivets first

- Fit a M4 x 4mm Pozi Pan Head Screw (17) to secure the RHSP to the back of the rack in 4 positions.
- Tighten the 4 screws using a Pozi Screwdriver (No. 2).

OCR ASSEMBLY

Step 10



M6 x 12mm Pozi Panhead Screws

- Insert two M6 x 12mm Pozi Pan Head screws (15) into the Rear Uprights as shown. Leave the heads approx. 3mm proud of the surface.

OCR ASSEMBLY

Step 11



- Carefully unpack the Cable Breakout (CBO) Assembly.



Do not attempt to rotate the reels as it will cause damage to the mechanism.

OCR ASSEMBLY

Step 12



M6 x 12mm Pozi Panhead Screws

- Push the CBO Assembly up into the Top Frame and engage the two slots behind the previously installed M6 Pozi Screws in the Rear Uprights – fully tighten both screws.
- Insert two M6 x 12mm Pozi Pan Head screws **(15)** into the CBO Bracket and tighten.
- Fit the 48mm by 5mm OD tubes (50 supplied) into the CBO.

OCR ASSEMBLY

Step 13



- Offer the Left-Hand Side Panel (LHSP) up to the left-hand side of the rack.
- Slide it into position ensuring that the 6 large holes line up (4 at the bottom and 2 at the top).
- Fix the LHSP to the rack with 6 white push fit rivets **(16)**.
- Fit M4 x 4mm Pozi Pan Head Screw **(17)** to secure the LHSP to the back of the rack in 4 positions.
- Tighten the 4 screws using a Pozi Screwdriver (No. 2).

OCR ASSEMBLY

Step 14



Working behind the rack:

- Offer the Rear Panel Assembly up to the back of the rack. You will notice that there is a blip on the panel which rests on the Base Frame. There are also cut outs with clearance for threaded bushes (4 positions). These help to locate the Rear Panel Assembly to the rack.
- Secure the Rear Panel Assembly to the rack using M4 x 4mm Screws in 12 positions.
- Tighten the 12 Screws using a Pozi Screwdriver (No.2).



Do not attempt to part the two rear panels.

OCR ASSEMBLY

Step 15



Working behind the rack:

- Offer the Upper Rear Panel up to the back of the rack. Note that there are 2 clearance holes for locating around the 2 threaded bushes on the Left- & Right-Hand Uprights. These must align before the Upper Rear Panel is fixed into position.
- Secure the Upper Rear Panel to the rack using M4 x 4mm Pozi Pan Head Screw (17) in 4 positions.
- Tighten the 4 Screws using a Pozi Screwdriver (No.2).

OCR ASSEMBLY

Step 16



The following operation requires the user to drill the floor. Check that it is permissible for the floor to be drilled and take all necessary safety precautions for the material being drilled.

Floor fixing:

- Decide on suitable floor fixings and drill 2 suitable holes in the positions previously marked in Step 1.
- Manoeuvre the assembled OCR1A into its final position.
- Adjust the position of the rack to line up with the floor fixing holes.

OCR ASSEMBLY

Step 17

Overhead gantry fixing:

- Secure the rack to the overhead gantry mountings using two suitable M12 bolts and 4 nuts (Not supplied).
- Secure the OCR to the floor



Do not over tighten

OCR ASSEMBLY

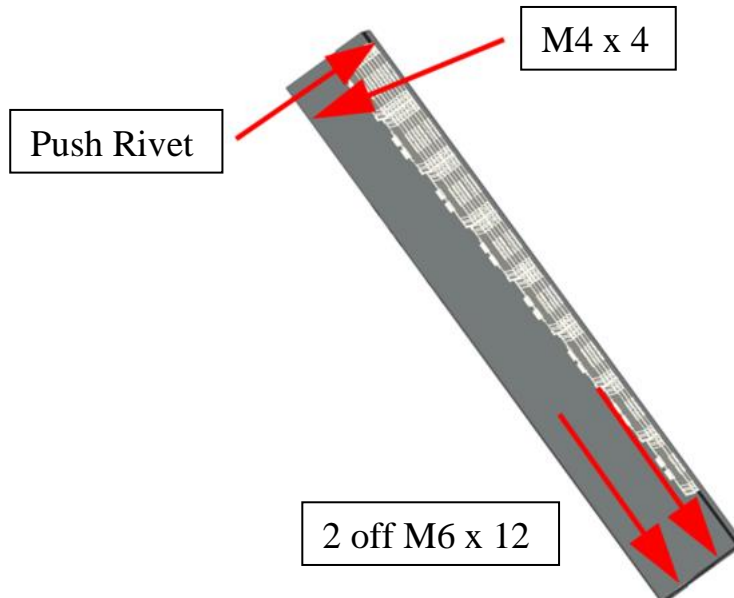
Step 18



- Position the Hydra Guide Assembly (HGA) onto the Base Frame and push into the right-hand corner and align the hole in the HGA with the hole in the Right-Hand Side Panel (RHSP).
- Select the White Push Fit Rivet and detach the head from the body.
- Push the body through the RHSP until the rivet body is flush with the surface.
- Push the head of the rivet through the rivet body and push firmly to engage. The rivet is engaged when the head is flush with the body and on the inside all 4 legs are splayed.

OCR ASSEMBLY

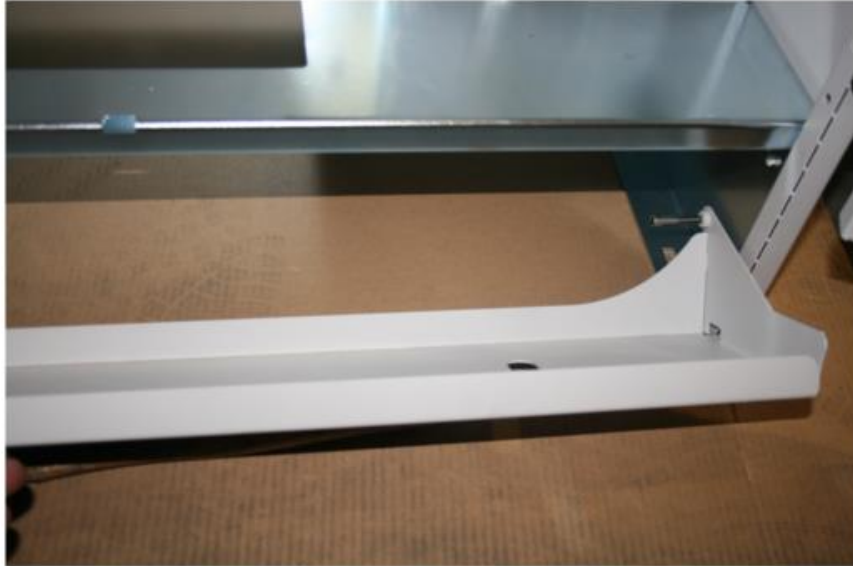
Step 19



- Insert the two M6 x 12mm Pozi Pan Head screws **(15)** through the HGA and into the Base Frame, do not tighten.
- Insert the M4 x 4mm Pozi Pan Head Screw **(17)** through the HGA and onto the RHS panel and fully tighten.
- From outside the rack insert a white push fit rivet **(16)** through the RHSP and into the Hydra Guide Assembly.
- Push the body through the RHSP until the head of the rivet body is flush with the with the panel surface.
- Push the head of the rivet through the rivet body and push firmly to engage the rivet. The rivet is engaged when the head is flush with the body and on the inside the 4 legs are played.
- If you cannot gain access to the RHSP then the push fit rivet can be inserted from inside the rack through the HGA into the RHSP.
- Tighten the M6 x 12mm Pozi Pan Head screws.

OCR ASSEMBLY

Step 20



- Insert 2; M6 x 40 Cap Head Screws **(19)** as shown.

NOTE: This is only applicable for the initial OCR1A supply, it is intended that these screws will be factory fitted.

- Fit the Splicing Machine Support Shelf (SMSS) into position.

OCR ASSEMBLY

Step 21



- Ensure the 3 hinges on the RHSP are in their ‘open’ position.
- Rest the right-hand door on the upper surface of the SMSS.
- **Tip** fold a piece of cardboard twice and place it between the base of the door and the SMSS to help align the holes in the door with the holes in the hinges
- Place your foot against the door to ensure it is stable.
- Close the middle hinge and insert an M5 x 12 CSK Head Pozi Screws **(18)**, loosely tighten.
- Close the other 2 hinges and insert a screw in each.
- Insert a further M5 x 12 CSK Head Pozi Screw **(18)** in each hinge and fully tighten all 6 screws.

OCR ASSEMBLY

Step 22



Open the right-hand door:

- Ensure the 3 hinges on the LHSP are in their 'open' position.
- Rest the left-hand door on the upper surface of the SMSS.
- **Tip** fold a piece of cardboard and place it between the base of the door and the SMSS to help align the holes in the door with the holes in the hinges.
- Place your foot against the door to ensure it is stable.
- Close the middle hinge and insert an M5 x 12 CSK Head Pozi Screws **(18)**, loosely tighten
- Close the other 2 hinges and insert a screw in each.
- Insert a further M5 x 12 CSK Head Pozi Screw **(18)** in each hinge and fully tighten all 6 screws.

OCR ASSEMBLY

Step 23



The OCR1A is now ready for use, please refer to the following documents for Fibre & Cable Installation Instructions contained in the **ISIS holding document EPT/COF/D901**.

**OPTICAL CONSOLIDATION RACK (OCR) CABLE & FIBRE
INSTALLATION**

SECTION 1

**Installation, termination and storage of COF201 in the Cable Break
Out (CBO)**

SECTION 2

**Extract fibres from the Cable Break Out (CBO) storage and route to
Sub-Rack/Splicing Trays**

SECTION 3

**Installation, termination & storage of Hydra Cable in the Hydra
Cable Storage Area (HCSA)**

SECTION 4

Extract Hydra fibres from HCSA storage and Splice

OCR ASSEMBLY

Step 24



Before you leave:

Place the Instructions into the Wallet (23) provided on the left-hand door.

Put a CBO Fibre Storage Key (21) into the first reel position of each CBO segment (4 keys are provided) by pushing the key into the hole and turning 90 degrees clockwise.

Ensure there are 3 sheets of self-adhesive labels (20) in the wallet

If any of the above parts are missing please contact Prysmian via e-mail or on the Helpline, details are given below.

Copyright Prysmian Group - 2023 You may not copy, reprint, or reproduce in any form the content, either wholly or in part, of this Installation Guide, without the written permission of the copyright owner. Specifications are for product as supplied by Prysmian Group: any modification or alteration afterwards of product may give different result. The information is believed to be correct at the time of issue. Prysmian Group reserves the right to amend the information within this Installation Guide without prior notice. This Installation Guide may include inaccuracies, omissions of content and of information and is not contractually valid unless specifically authorised by Prysmian Group. Property of Prysmian Group UK - Uncontrolled when printed Prysmian Cables & Systems Limited, Chickenhall Lane, Eastleigh, Hampshire, SO50 6YU, United Kingdom.

PRYSMIAN HELPLINE: + 44 (0) 7816191633
connectivity.helpline@prysmiangroup.com

Page 27 of 27