

OAsys® WALL MOUNTED PRODUCTS
External Compact Termination (ECT) Wall Box
IP090 – Issue 3

Description

- Provides a facility for termination of up to 8 fibres.
- Suitable for SC Simplex and Duplex and LC Duplex and Quad connectors.
- Can be used with mechanical, crimp or heat shrink splice protectors
- Suitable for internal or external applications
- Lockable cover
- SPACE ENVELOPE: 140mm x 35mm x 185mm (W x D x H).

Tools & Additional Items Required

Additional Items Required: Prysmian Part No.

Slice protectors 4A XPESC00053

Fixings: All Fixings Supplied

Tools: Flat head Screwdriver, Fibre preparation tools and cable preparation tools

Component Parts (pictures not to scale)

1 ECT Wall Box Assembly

Qty 1



2 Fixing Kit Contents as listed below: -

- | | |
|-------------------------------------|------------------------------|
| 1. Crimp splice holder insert | 7. 2x Yellow wall plug |
| 2. Heat shrink splice holder insert | 8. 2x Wood screws |
| 3. Mechanical splice holder inserts | 9. 2x M4 fibre washers |
| 4. Cable clamp bar | 10. 5mm Diameter Grey tube |
| 5. Through wall bend manager | 11. 2x Screw No.6 X 5/8 Pozi |
| 6. Grommet set | |

Prysmian
Group
INSTALLATION INSTRUCTION

Fitting the wall box to the wall

Step 1

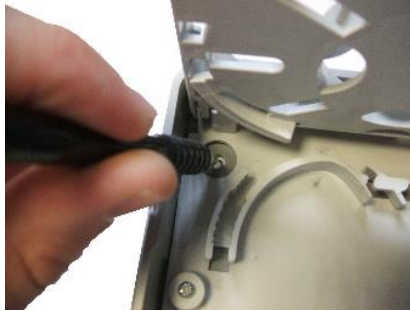


- Take the ECT Wall Box and remove the cover.
- This is done by unlocking the lock and sliding the cover upwards away from the lock.

Prysmian
Group
INSTALLATION INSTRUCTION

Fitting the wall box to the wall

Step 2

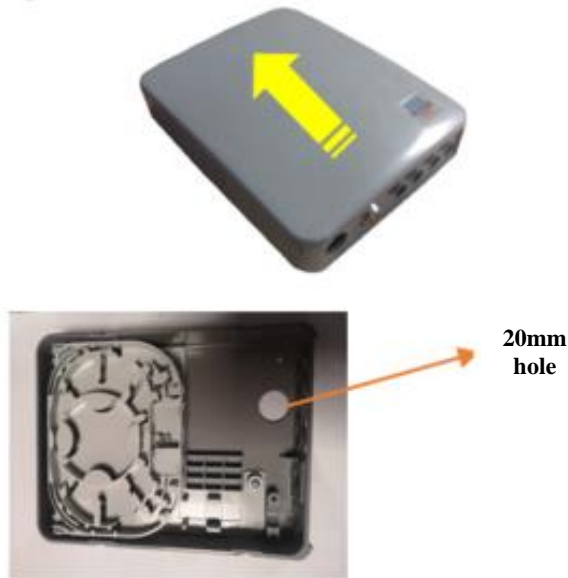


- Place the ECT wall box on to the wall where it is being mounted.
- Mark the wall where the fixing holes are.

Prysmian
Group
INSTALLATION INSTRUCTION

Fitting the wall box to the wall

Step 3 – If patch cords are to route through the wall

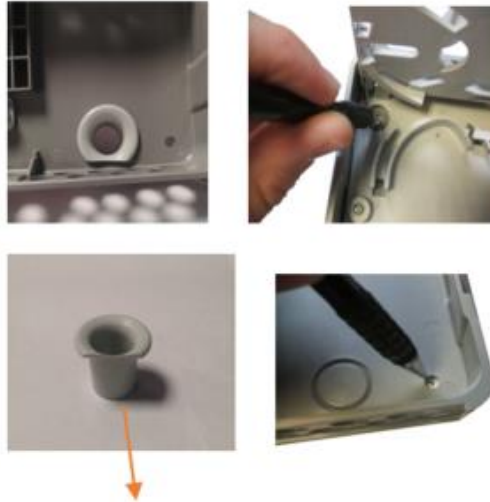


- Remove the cover of the ECT Wall Box referring to step 1.
- Remove the 20mm knock out through the wall area as shown above.
- Ensure you follow your local health and safety rules when removing the knockout.

Fitting the wall box to the wall

Step 4 – If patch cords are to route through the wall

ECT wall box through wall bend manager

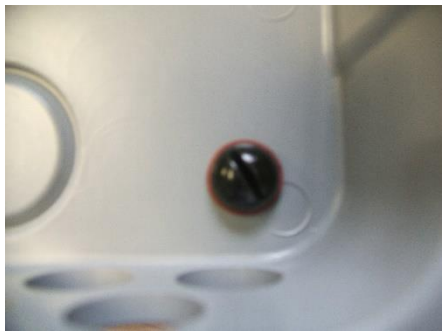


- Mark the wall where the hole made in the previous step is. Drill a hole of 25mm to the wall and check for any hazards before drilling.
- Insert an ECT wall box through wall bend manager into the hole and place the ECT wall box on to the wall where it is being mounted.
- Mark the wall where the fixing holes are.

Prysmian
Group
INSTALLATION INSTRUCTION

Fitting the wall box to the wall

Step 5



- Fit the box to the wall using the fixing supplied.
- Fit a nylon washer over the screw as shown above before screwing the box to the wall.

Installing the cable

Step 6



- Take the grommet shown above and slide it over the end of the cable, the cable will expand around the end of the cable.
- Slide the grommet off the cable.
- Cut the grommet where the expanded mark.

Installing the cable

Step 7



- Slide the grommet back over the cable as shown.
- For blown fibre strip approximately 50mm of the outer sheath off the cable.
- For conventional cables strip the outer sheath 2M from the end.

Installing the cable

Step 8



- Mark the tube 25mm from the cable butt.
- Cut the tube on the mark.
- Plug the gas connector onto the 5mm tube.

Installing the cable

Step 9



- Cut the grey 5mm tube to 65mm long for blown fibre cables.
- Fit the grey 5mm tube to the other side of the gas connector.
- Plug the gas block connector into the base as shown.
- Route the grey tube as shown.
- For conventional cables use the grey 5mm tube to over sleeve the cable element.

Installing the cable

Step 9



- Cut the grey 5mm tube to 65mm long for blown fibre cables.
- Fit the grey 5mm tube to the other side of the gas connector.
- Plug the gas block connector into the base as shown.
- Route the grey tube as shown.
- For conventional cables use the grey 5mm tube to over sleeve the cable element.

Installing the cable

Step 10



- Using the two NO.6 plastite screws and the cable clamp to clamp the cable in place.
- Use the bottom cut-out (in the orientation shown above) for up to 10.5mm cable diameter, for smaller diameters use the top cut-out.

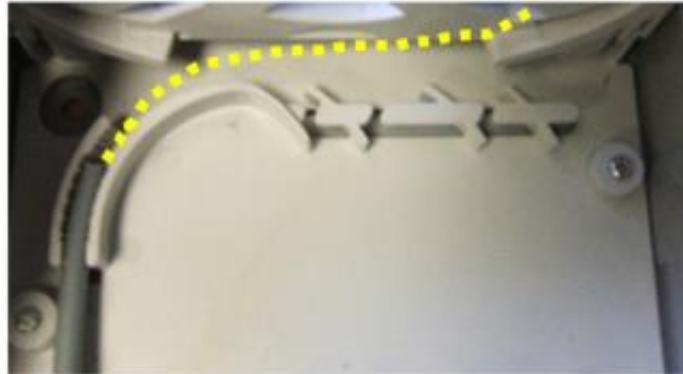
Installing the cable

Step 11

The fibre is now ready to be blown into the wall box.

Routing the Fibre and Installing Patchcords

Step 12



- Route the fibre as shown with the dotted line above.
- Route the fibre up onto the top tray.

Routing the Fibre and Installing Patchcords

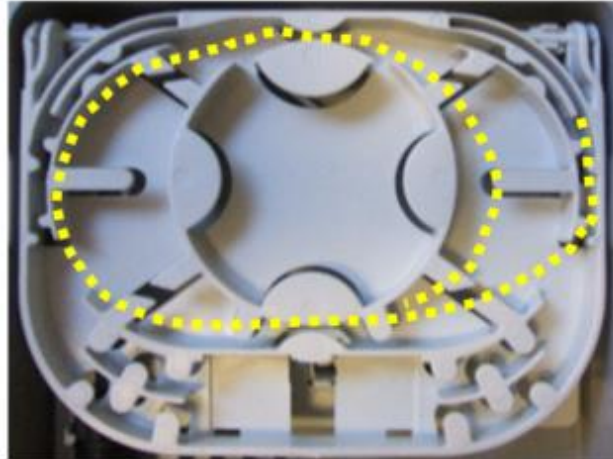
Step 13



- Remove the outer coating off the blown fibre at the point highlighted above.
- Ensure there is two metres of fibre on the splice tray.

Routing the Fibre and Installing Patchcords

Step 14



- Route the fibre around the tray as shown with the dotted line above.
- Splice the fibres to the pigtails.

Prysmian
Group
INSTALLATION INSTRUCTION

Routing the Fibre and Installing Patchcords

Step 15



Crimp



Heat Shrink



Mechanical

- Select the required splice bay.

Routing the Fibre and Installing Patchcords

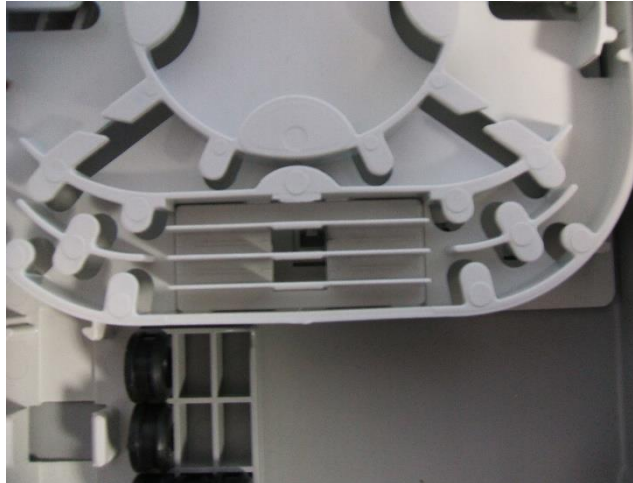
Step 16



- Install the splice bay.
- Align to the two tabs on the bay with the two cut-outs on the tray.

Routing the Fibre and Installing Patchcords

Step 17



- Push the splice bay down until it locks into position.

Prysmian
Group
INSTALLATION INSTRUCTION

Routing the Fibre and Installing Patchcords

Step 18 – For bottom face exit



- Take the grommet set and use the blanking grommets to blank any unused holes in the bottom of the wall box.

Prysmian
Group
INSTALLATION INSTRUCTION

Routing the Fibre and Installing Patchcords

Step 19



- Take the patch cord and thread it through the hole you have selected as shown.

Prysmian
Group
INSTALLATION INSTRUCTION

Routing the Fibre and Installing Patchcords

Step 20



- Take the split grommet and place it around the patch cord (ensure the chamfered edge is facing towards the base).
- Fit the grommet into the base.

Prysmian
Group
INSTALLATION INSTRUCTION

Routing the Fibre and Installing Patchcords

Step 21 – Through the rear



- Take the patch cord and thread it through the hole you have selected as shown.
- Ensure the bottom face is populated with blank grommets.

Prysmian
Group
INSTALLATION INSTRUCTION

Routing the Fibre and Installing Patchcords

Step 22 – For tray wall



- If using a ruggedised fibre use the edge of the metal bracket as the strip mark for the cable – Strip the cable using your company’s standard procedure.
- Anchor tube or patch cord to the metal plate using two cable ties.
- Route the fibre underneath the tabs and up onto the tray.

Prysmian
Group
INSTALLATION INSTRUCTION

Routing the Fibre and Installing Patchcords

Step 23



- Store any unused grommets in the storage area inside the base.
- Ensure when the split grommets are stored, they are stored with the joint facing upwards.

Prysmian
Group
INSTALLATION INSTRUCTION

Routing the Fibre and Installing Patchcords

Step 24



- Once all patch cords are fitted the cover can be fitted.
- Align the line on the base with the line on the cover.
- Slide the cover down.
- Lock the cover in place.

Copyright Prysmian Group - 2022 You may not copy, reprint, or reproduce in any form the content, either wholly or in part, of this Installation Guide, without the written permission of the copyright owner. Specifications are for product as supplied by Prysmian Group: any modification or alteration afterwards of product may give different result. The information is believed to be correct at the time of issue. Prysmian Group reserves the right to amend the information within this Installation Guide without prior notice. This Installation Guide may include inaccuracies, omissions of content and of information and is not contractually valid unless specifically authorised by Prysmian Group. Property of Prysmian Group UK - Uncontrolled when printed Prysmian Cables & Svstems Limited, Chickenhall Lane, Eastleigh, Hamshire, SO50 6YU, United Kinodm.

PRYSMIAN HELPLINE: + 44 (0) 7816191633
connectivity.help@prysmiangroup.com

Page 26 of 26