

OAsys® INTERNAL PLANT
HOME HUB
Part Number: Various

Description

The Home Hub Wall Box is an internal wall box. The wall box was initially designed to house home networking equipment. The Home Hub is very cosmetically pleasing and easy on the eye. The box can be used to house various pieces of equipment. The back plate kit gives total flexibility allowing the installer to drill their own holes in the plate, so that it can be adapted for any application. The Home Hubs modular approach allows the box to be easily upgraded as more equipment is required.

For full details see Prysmian data sheet WM038.

SPACE ENVELOPE: 400mm (W) x 307mm (H) x 131mm (D)

Tools & Additional Items Required

Additional Items:

Home Hub Upgrade box – Slotted
 Home Hub Upgrade box – Keyed
 Home Hub 2 Unit back plate kit
 Home Hub Patch Panel Kit
 Pack of 4 PSTN Jacks
 Pack of 4 Secondary Jacks
 6 Gang socket with Surge Protection


Prysmian Part No.

XHHSC00022
 XHHSC00030
 XHHSC00028
 XKTSC00313
 XKTSC00314
 XKTSC00315
 XKTSC00318

Tools:

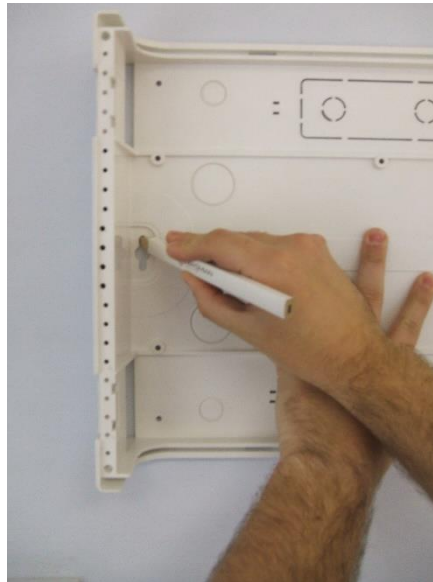
Screwdriver, Drill, Size 7 Spanner, Flush Cutters, Hammer, Adjustable spanner

Component Parts (pictures not to scale)

1 Home Hub Wall Box	Qty 1	2 Vent Plate	Qty 2
		3 LH and RH Hinges	Qty 2 + 2
		4 Fixing screws	Qty 1

Fitting the wall box to the wall

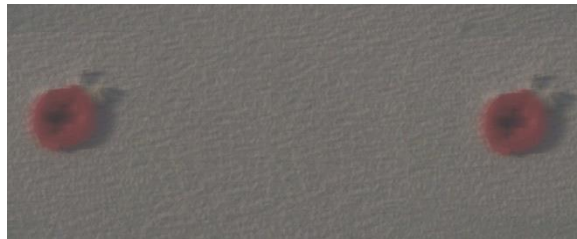
Step 1



- Remove the door from the base and take the kits out of the base.
- Offer the box up against the wall and place a spirit level on the top of the box to ensure the box is square and the hinge position is on the correct side.
- Mark the fixing positions on the wall.
- Place the base back in the box.

Fitting the wall box to the wall

Step 2



- Drill the wall using a 6mm drill bit in the uppermost positions approximately 30mm deep as shown above. NOTE, if fixing to stud walls use appropriate plaster board fixings.
- Once the hole has been drilled fit a wall plug into the holes. Use a hammer and lightly knock the plug into the wall.

Fitting the wall box to the wall

Step 3



- Take the fixing screws and screw them into the wall plugs for approximately half of their length.
- Place the wall box over the head of the screw so that the box drops into position, then fully tighten the screws.

Fitting the Hinges

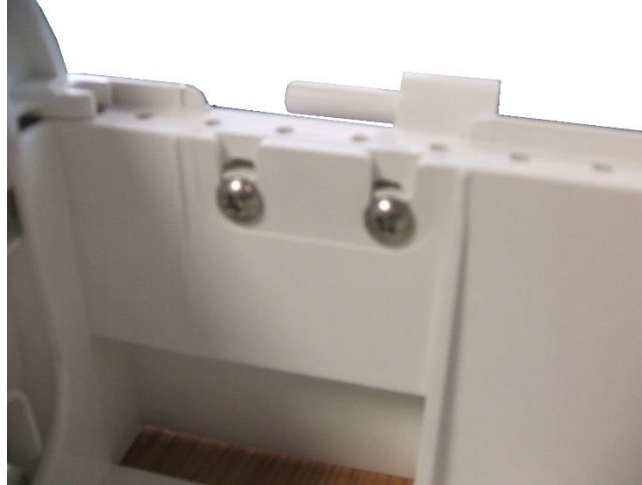
Step 4



- Decide whether the cover needs to hinge to the left or the right-hand side.
- Select the correct hinges the hinges should have the open end pointing towards the top of the box.
- Push the hinges into the side of the box.

Fitting the Hinges

Step 5



- Using the plastite screws from the fixing kit. Fully tighten the hinges into position.

Fitting the vent plates

Step 6



- Take a vent plate and slot into the bottom of the box.

Fitting the vent plates

Step 7



- Fully engage the vent plate.

Fitting the vent plates

Step 8



- Using the M4 Screws supplied in the fixing kit, screw the vent plate in position.
- If only one Home Hub Box is to be fitted, you can repeat steps 6 to 8 for the vent plate at the top of the box.

Fitting the door to the base

Step 9



If you are adding an upgrade box skip to step 11

- Align the two holes in the side of the door and slide them over the hinges that were fitted in step 5.

Fitting the door to the base

Step 10



- Close the door and lock the door.

Fitting additional boxes and accessories

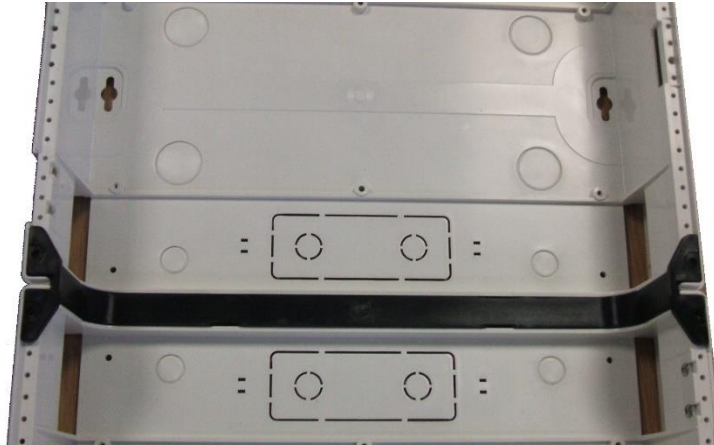
Step 11



- Take your upgrade and place it on top of the box that is already fitted to the wall.

Fitting additional boxes and accessories

Step 12



- Fully engage the joining bar on to the two Home Hub Boxes.
- Screw the joining bar in place using four M4 Screws.

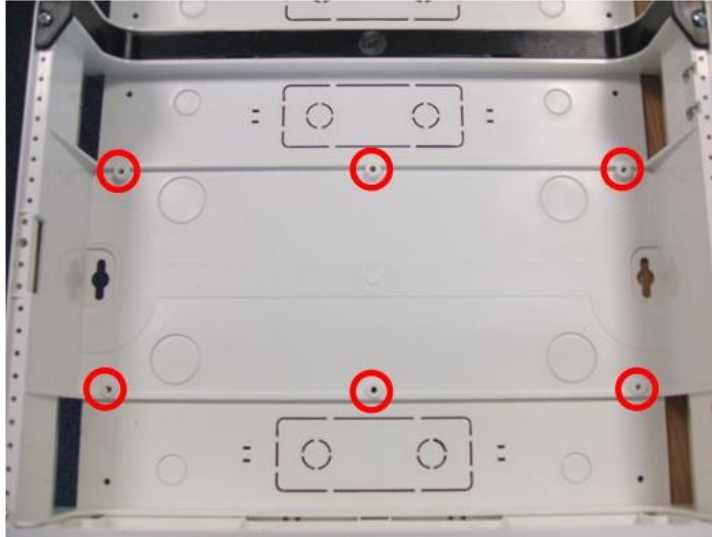
Fitting additional boxes and accessories

Step 13

- Drill a hole at the top of the fixing hole using a 6mm drill bit. NOTE, if fixing to stud walls use appropriate plaster board fixings.
- Once the hole has been drilled fit a wall plug into the holes. Use a hammer and lightly knock the plug into the wall.

Fitting additional boxes and accessories

Step 14



Fitting back plates

- Take the fixing kit that is supplied with the back plate remove the six spacer and screw them to the back box using a size 7 spanner in the positions highlighted.

Fitting additional boxes and accessories

Step 15



- Fix the back plate to the spacer using the six screws that were supplied in the kit.

Fitting additional boxes and accessories

Step 16



Fitting Patch panels

- Clip the keystone jacks into the panel.
- Then screw the patch panel to the side of the home hub box using the fixing supplied in the kit.
- The screws are self-taping screws and can be fitted into any of the smaller holes (3mm Diameter) down the sides of the box.