

# Installation Procedure For Aerial Cable CBT System

## CIG0148

### Product application

This instruction details the installation procedure for the Aerial Cable CBT System.



Port Number	Feeder Cable Fibre Colour	Port Number	Feeder Cable Fibre Colour
1	Blue	7	Brown
2	Orange	8	Violet
3	Green	9	Black
4	Red	10	White
5	Grey	11	Pink
6	Yellow	12	Turquoise

### Precautions and Warnings

- ! This guide is only valid for products purchased from or approved by Prysmian Group.
- ! During this procedure all local Health & Safety statutory regulations must be adhered to.
- ! This installation should only be carried out by suitably trained competent persons.
- ! 6.0mm Cable Parameters
  - Minimum Bend Diameter (Static) – 120mm
  - Maximum Working Tension – 1000N
  - Typical Installation Tension – 150N

## Tools and materials

1. Pole/House Mounting Clamp PN: XTCSC00001	2. Helical Tension Clamp PN: XTCSC00002	3. Cable Cleat PN: XTCSC00009	4. Cable Pulley PN: XTCSC00027	5. Sub-duct PN: n/a
				
6. Steel Capping PN: XTCSC00020	7. Plastic Capping PN: XTCSC00019	8. Capping Adaptor PN: XTCSC00021	9. Cable Stocking PN: XTCSC00008	10. Cable Dispenser PN: XTCSC00025
				
11. 4/12f Drop Cable Sheath Stripper PN: XBFSC01760	12. Side Cutters PN: n/a	13. PVC Tape PN: n/a	14. CBT Connector Tool PN: XKTSC01437	
				

## Pole Mounted CBT Terminal Installation

### Step 1



Determine the preferred position for the CBT Terminal.

### Step 2



Remove the base from the Connector housing by gently deflecting the two clips away from the base.

### Step 3



Attach the base to the pole using the steel banding provided. Alternatively, the base can be attached to the pole using wood screws.

### Step 4



At the CBT Terminal fit the cable into a suitable cable dispenser.

### Step 5



Remove and fleet sufficient cable from the drum to enable the cable to be installed into the u/g joint.

### Step 6



Re-attach the connector housing to the base. The housing is designed for either top or bottom entry of the drop cables.

### Step 7



Secure the feeder cable down the pole using pole cleats.

### Step 8



Install the cable through the underground network to the joint position.

### Step 9



Fit the capping adaptor to the base of the pole.

## Cable Instruction Guide

### Step 10



Protect the cable going up the pole with the steel or plastic capping.

## Underground Joint Chamber CBT Terminal Installation

### Step 11

**No Picture**

The CBT can be installed within an underground chamber. It should be secured to either the chamber wall or onto a MOBRA.



# Cable Instruction Guide

## Pre-Connectorised Drop Cable Installation

### Step 12



At the CBT Terminal fit the Drop Cable drum into a suitable cable dispenser.

### Step 13



Attach the Mounting Clamp to the pole at the correct position.  
**Care should be taken to ensure that the cable does not infringe the minimum ground clearance requirements under worst case conditions.**

### Step 14



Attach a suitable pulley to the Mounting Clamp.

### Step 15



Feed the pulling bond through the pulley at the cable dispenser pole.

### Step 16



Attach the swivel to the cable using that cable stocking grip.

### Step 17



Attach the Mounting Clamp to the house at the correct position.  
**Care should be taken to ensure that the cable does not infringe the minimum ground clearance requirements under worst case conditions.**

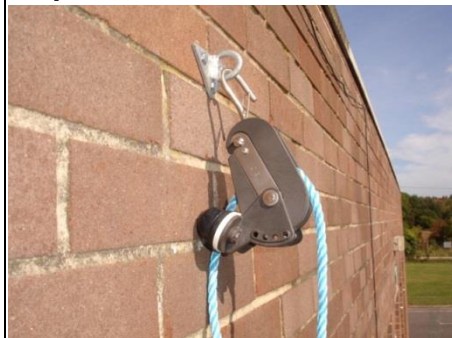
# Cable Instruction Guide

## Step 18



Attach a suitable pulley to the Mounting Clamp.

## Step 19



Pass the pulling bond through the pulley at the remote pole/house.

## Step 20



Pull the pulling bond and cable across the span.

**Care should be taken to ensure that there is no risk to third parties during this operation.**

## Step 21



Continue to pull the cable across the span until there is enough cable left on the drum to locate the pre-connectorised end into the CBT Terminal Block.

## Step 22



Fit the helical tension clamp to the cable and mounting clamp at the cable dispenser pole.

## Step 23



Pull the cable to the required tension and fit the helical tension clamp at the pole/house.

## Step 24



At the building end fit the CBT External Customer Termination Box in a suitable position. This could be inside or outside the building.

## Step 25



Determine the length of cable required to link the tension clamp to the CBT External Customer Termination Box. Mark the cable at this point and add an extra 3m.

## Step 26



Cut the cable at this mark.

# Cable Instruction Guide

## Cable Stripping

### Step 27



Open the cutter by pulling down on the black arm.

### Step 28



Assemble the cutter around the cable at the mark made in step 24. The blades should be positioned over the groove and yellow line.

**WARNING: Failure to maintain the 90° position relative to the cable wire strength members may result in permanent damage to the stripper tool.**

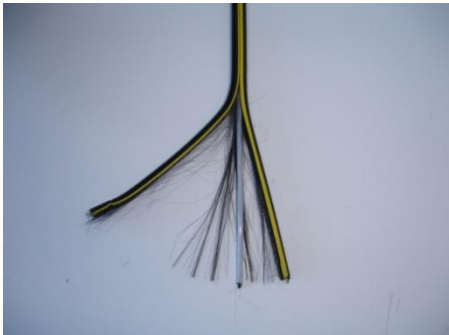
### Step 29



Pull the cutter along the cable.

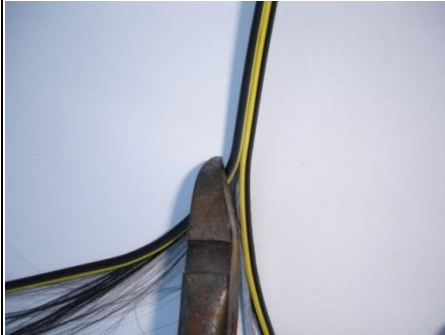
**WARNING: Failure to maintain the 90° position relative to the cable wire strength members may result in permanent damage to the stripper tool.**

### Step 30



Separate the two halves of the Fibre Drop Cable sheath back to the mark made in step 25.

### Step 31



Carefully cut the two halves of the cable sheath, non-mettalic yarns and the steel wire strength members.



## Installation Of Mk 2 Pre-Connectorised Assembly

### Step 32



Remove the remaining cable from the drum.

### Step 33



Slide the rubber boot away from the assembly

### Step 34



Unscrew the pulling eye locking nut.

### Step 35



Remove the pulling eye.

### Step 36



Slightly release the shroud nut.

### Step 37



Slide the shroud body back.

**Do not pull against the connector.**

### Step 38



Using the CBT Connector Tool remove the cap from the relevant port on the CBT. There is a number by the port for identification.

### Step 39



Remove the adapter blanking plug.

Note: The colour may differ.

### Step 40



The CBT Port Cap retaining straps on the Pulling Eye can be removed if required but the rubber washer must sit under the cable nut.



# Cable Instruction Guide

## Step 41



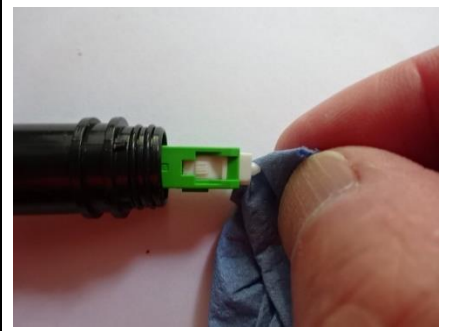
Alternatively, they can be screwed together and kept with the CBT.

## Step 42



Remove the SC connector protective shroud.

## Step 43



Clean the connector with a lint free cloth or other suitable wipe.

## Step 44



Push SC connector into the adapter. Ensure locating the rib is facing upwards to line on top of the port.

## Step 45



Line the rib on the shroud body to rib on the port and insert the shroud into the port.

## Step 46



Using the CBT Connector Tool tighten the shroud nut fully.

## Step 47



Tighten the clamp nut ensuring the seal is in the end of the shroud.

## Step 48



Slide the rubber boot over the clamp nut.

## Installation Of Pre-Connectorised Assembly Into An Underground CBT

For installation distances up to 25m

### Step 49



Remove the pulling eye and attach it to the pulling bond.

### Step 50



Secure the end with pvc tape.

### Step 51



Re-attach the pulling eye to the pre-connectorised assembly.

### Step 52

No Picture

Carefully pull the assembly, by hand, through the underground network to the joint position

### Step 53



Remove the pvc tape and follow Steps 37 – 51 or 53 – 68.

## For installation distances over 25m

### Step 54



Fit a helical tension clamp around the drop cable.  
Note the position of the clamp relative to the connector.

### Step 55



Attach the pulling bond to the tension clamp.

### Step 56



Secure the end of the pulling bond with pvc tape

## Step 57



Secure the pre-connectorised assembly to the pulling bond and tension clamp with pvc tape.

## Step 58

**No Picture**

The cable can now be carefully installed into the underground network

## Step 59



Remove the pvc tape and tension clamp and follow Steps 37 – 51 or 53 – 68.

## CBT External Customer Termination Box Installation

## Step 60



Carefully knock out the cable entry port on the left hand side of the base. Take care to support the base when doing this.

## Step 61



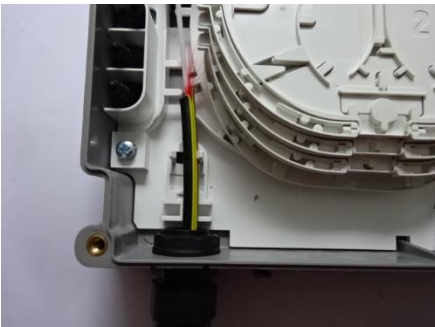
Fit 'O' Seal onto the cable gland and into annular recess in hexagonal face Push the cable gland into port so that the 'O' Seal sits against outside face of base. Fit Locknut and tighten against inside face of base to secure it.

## Step 62



Remove the output cable knock out port.

## Step 63



Insert the drop cable through gland and position approximately 65mm from the lowest face of the box.

## Step 64



Apply a circumferential cut to the loose tube at the cable butt

## Step 65



Apply a circumferential cut to the loose tube at 1m from the end of the tube.



## Step 66



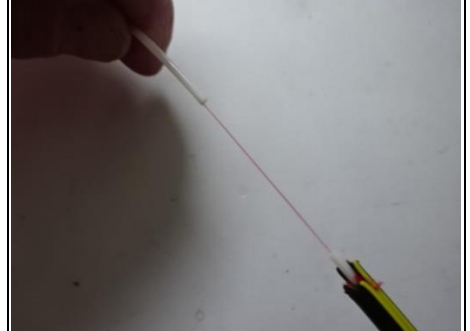
Carefully remove the tube.

## Step 67



Clean the optical fibre.

## Step 68



Remove the final section of the loose tube.

## Step 69



Clean the optical fibre.

## Step 70



Pass the optical fibre through the 6mm – 3mm connector.

## Step 71



Fit the connector to Drop Cable.

## Step 72



Insert optical fibre through the locking tube.

**Please Note:** The locking tube is pre-cut to the correct length

## Step 73



Fit the tube to the reducing connector.

## Step 74



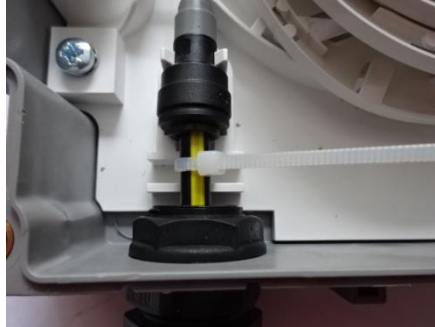
Locate the completed tube assembly into position and clip the connector into place.

## Step 75



Tighten gland sealing nut.

## Step 76



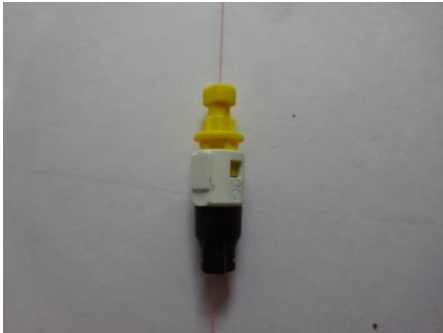
Secure the cable with cable tie in position shown.

## Step 77



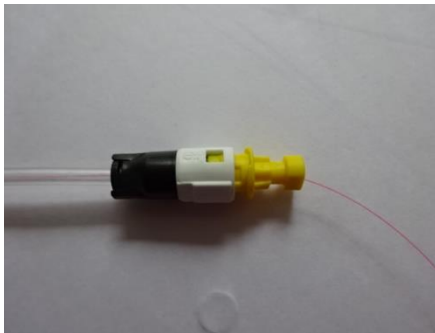
Trim the excess from the cable tie.

## Step 78



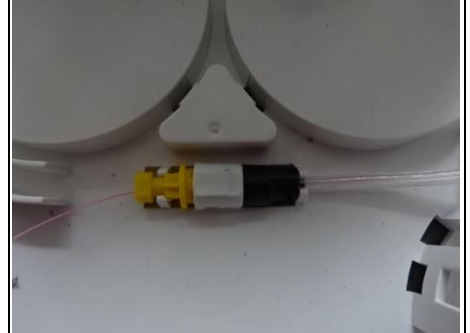
Pass the optical fibre through the connector

## Step 79



Attach the connector onto the locking tube.

## Step 80



Fit the connector into the locking clips.

## Step 81



Wrap the locking tube around the mandrels.

## Step 82



If the wrapping is done correctly there will be no excess tube.

## Step 83



Trim the output gland to the size for the outlet cable

## Cable Instruction Guide

### Step 84



Fit the output gland into the enclosure.

### Step 85



The output cable can be fed through the gland and the optical fibre spliced onto the drop cable fibre.

Copyright Prysmian Group - 2024 You may not copy, reprint, or reproduce in any form the content, either wholly or in part, of this Installation Guide, without the written permission of the copyright owner. Specifications are for product as supplied by Prysmian Group: any modification or alteration afterwards of product may give different result. The information is believed to be correct at the time of issue. Prysmian Group reserves the right to amend the information within this Installation Guide without prior notice. This Installation Guide may include inaccuracies, omissions of content and of information and is not contractually valid unless specifically authorised by Prysmian Group. Property of Prysmian Group UK - Uncontrolled when printed Prysmian Cables & Systems Limited, Chickenhall Lane, Eastleigh, Hampshire, SO50 6YU, United Kingdom.

**PRYSMIAN HELPLINE: + 44 (0) 7816191633**  
[connectivity.helpline@prysmian.com](mailto:connectivity.helpline@prysmian.com)



## Contact information

	Office	Telephone Fax	email
<b>ASEAN</b>	<b>Singapore</b>	T : +65 6898 3633 T : +65 6265 0707	sales.asean@prysmiangroup.com
<b>AUSTRALIA</b>	<b>Liverpool</b>	T: 1300 300 304 F : 1300 300 307	sales.telecom.au@prysmiangroup.com
<b>CHINA</b>	<b>Wuxi</b>	T : +86 510 68069518 F: +86 510 68069559	tls.china@prysmiangroup.com
<b>DANUBIAN</b>	<b>Slatina</b>	T : +40-349-406.628 F : +40-349-433.484	customercare.romania@prysmiangroup.com
<b>FRANCE</b>	<b>Champs-Sur-Marne</b>	T : +33 1 69 67 72 80	telecom.fr@prysmiangroup.com
<b>ITALIA</b>	<b>Milano</b>	T: +3964493939 F: +3964499264	pqa@prysmiangroup.com
<b>LATAM</b>	<b>Sorocaba</b>	T: +55 15 3212 6801 F: +55 15 3212 6814	sales.telecom.br@prysmiangroup.com
<b>MIDDLE EAST</b>	<b>Dubai</b>	T : +971 4 368 8682 F : +971 4 368 8683	dubaioffice@prysmiancables-me.com
<b>NORDICS</b>	<b>Malmö</b>	T : +46 380 554 265	info.nordic@prysmiangroup.com
<b>NORTH AMERICA</b>	<b>Lexington</b>	T : 800 669 0808	comm.cables@prysmiangroup.com
<b>OPGW &amp; SPECIALS</b>	<b>Vilanova</b>	T: +34 93 811 6181 F: + 34 93 811 6031	opgw@prysmiangroup.com
<b>RUSSIA</b>	<b>Moscow</b>	T: +7 495 777 80 86 F: +7 495 777 80 89	info.ru@prysmiangroup.com
<b>SPAIN &amp; AFRICA</b>	<b>Maliaño</b>	T: +34 942247118 F: +34 942247114	santander.bo@prysmiangroup.com
<b>TURKEY</b>	<b>Istanbul</b>		tpks@prysmiangroup.com
<b>UK</b>	<b>Eastleigh</b>	T: +44 2380 295 000	sales.telecom.uk@prysmiangroup.com