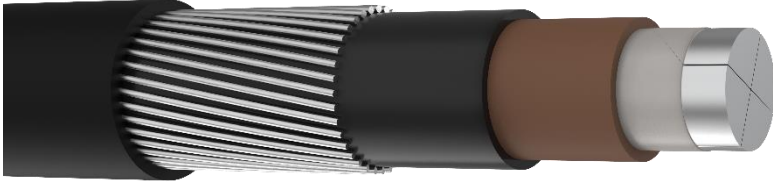


IEC 60502-1

Single Core Sectoral Armoured. IEC 60502-1. 600/1000V



Circular Solid Aluminium design made up of 4 shaped solid sectors. 1kV Sectoral cables are a standard specification taken across utility networks in the United Kingdom.

KEY APPLICATIONS

These cables are generally used as tails in LV substations. They are available in both armoured and unarmoured versions

FEATURES AND BENEFITS

Sectoral Circular Solid Aluminium

Cond XLPE Insulation

PVC Bedding

Aluminium wire armour

PVC Oversheath

CONSTRUCTION

Conductor material	Aluminium
Conductor surface	Bare
Core insulation material	XLPE
Armouring/reinforcement	Wire
Armouring	Yes
Material inner sheath	Polyvinyl chloride (PVC)
Material outer sheath	Polyvinyl chloride (PVC)
Cable shape	Round

APPLICATION PROPERTIES

Nominal voltage U ₀ [V]	600
Nominal voltage U [V]	1,000
Max. conductor temperature [°C]	90
Outdoor installation	Yes
Underground installation	Yes
UV resistant	Yes
Min. operating temperature [°C]	-15
Min. installation temperature [°C]	0
Bending radius (rule)	8D

COLOURS

Insulation: Single Core: Brown

Sheath: Black

TECHNICAL DATA

Number of cores	Nominal Cross Section Conductor [mm ²]	Diameter [mm]	Minimum Bend Radius [mm]	Max. Pulling Tension* [kg]	Cable Weight [kg/km]
1	600	44.0	350	1800	2.9
1	740	49.7	390	2000	3.7

* based on the conductor.

CURRENT RATINGS

Number of Cores	Product Code	Nominal Cross Section [mm ²]	Laid in Air [amps]	Laid Direct in Ground [amps]	Drawn in a Duct [amps]
1	20144252	600	839	672	557
1	20144254	740	940	734	591

Cables installed in **three phase, trefoil formation**

Current Rating conditions: Air Temp 25°C, Ground Temp 15°C, Depth of Burial 0.5m, Thermal Resistance of Soil 1.2°C m/

LOGISTICS

Number of cores	Nominal Cross Section Conductor [mm ²]	Length [m]	Outer Diameter [mm]	Total Width [mm]	Total Weight [kg]
1	600	100	1500	850	438
		250	1600	950	866
		500	2200	1000	1855
1	740	100	1700	975	575
		250	1700	975	1100
		500	2200	1000	2240

