

RACEWAY

Product Application

This instruction details the installation procedure to install the RACEWAY fibre routing system.



The RACEWAY system allows you to discreetly run up to 4 fibers to remote nodes including along corridors or to multiple office spaces or rooms.

Precautions and Warnings

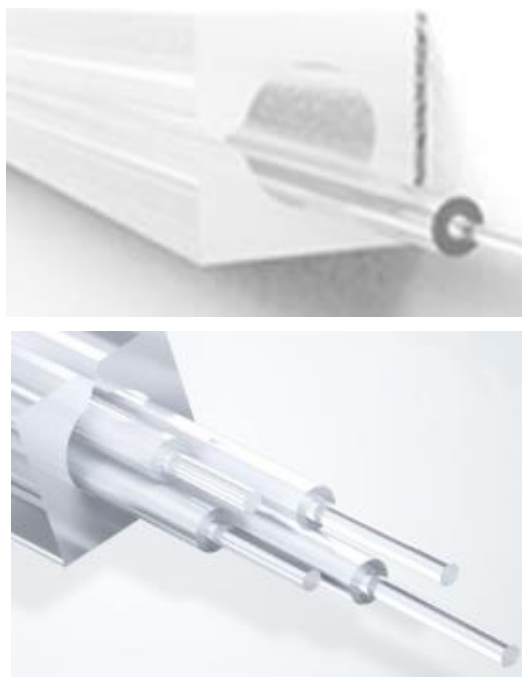
- ! This guide is only valid for products purchased from or approved by Prysmian Group.
- ! During this procedure all local Health & Safety statutory regulations must be adhered to.
- ! This installation should only be carried out by suitably trained competent persons.

Component Parts (pictures not to scale)

<p>1 Drill</p>	<p>2 6mm diameter Drill Bit, 25 cm long</p>	<p>3 12mm diameter Drill Bit, 25 cm long. (This is needed if connectorized cable is to be passed through wall).</p>	<p>4 Screwdriver (in case you want to use screws and plugs) or double-sided tape</p>	<p>5 Spirit Level</p>	<p>6 Pencil</p>
<p>PN: N/A</p> 	<p>PN: N/A</p> 	<p>PN: N/A</p> 	<p>PN: N/A</p> 	<p>PN: N/A</p> 	<p>PN: N/A</p> 

Parts list

RACEWAY



This is a silicone duct (transparent or white), with 3M adhesive on one side, which allows quick installation on any surfaces, and which guides and protects up to 4x 900um optical cable.

NB: It can also contain a standard heat shrinkable splice protector that will remain invisible and protected inside.

Parts list

Planar Corner Tool (Transparent or White)



Protection of 900um optical cable(s) in a flat corner.

NB: The radius of the bends does not go below 15mm on a flat surface.

Parts list

Internal Corner Tool (Transparent or White)

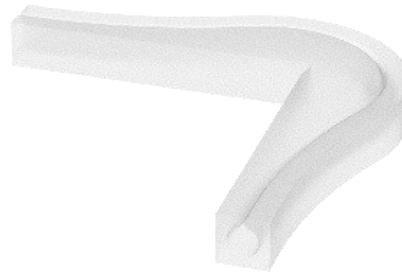


Protection of 900um optical cable(s) in internal bends.

NB: The radius of the bends does not go below 15mm on an inner curve wall corner.

Parts list

Edge Corner Tool (Transparent or White)



Protection of 900um optical cable(s) in external bends.

NB: The radius of the bends does not go below 15mm on an external curve wall corner.

Parts list

Wall Pass-Through/Divider



This accessory can either be used to pass fibre through the wall from one room to another (with connector if necessary)
Or to divide paths with multiple fibers.

Parts list

Optical Cable-Placing Tool



This tool facilitates and speeds up the insertion of the fiber into the RACEWAY.

Installing the RACEWAY on a surface

Step 1



Before installing the RACEWAY on any surface, it is mandatory to clean the surface properly to minimize the presence of dust.

BEST PRACTICE:

It is recommended to use a dust-catcher cloth or a brush.

Installing the RACEWAY on a surface

Step 2



To have a precise path on surfaces with no edges and corners, using a spirit level, lightly mark a straight line on the wall with a pencil.

Installing the RACEWAY on a surface

Step 3



BEST PRACTICE:

Always open about 1-2cm of the RACEWAY tube before installation. This will ensure the RACEWAY is ready for fibre deployment.

Installing the RACEWAY on a surface

Step 4



To commence installing the RACEWAY, take off 5cm of the protective liner.

Installing the RACEWAY on a surface

Step 5



Carefully lay the RACEWAY on the surface.

Installing the RACEWAY on a surface

Step 6



Then take off 20cm of the protective liner to carry on installing RACEWAY.

BEST PRACTICE:

Always remove 20cm protective lining at a time. RACEWAY is prone to tangle if longer lengths of protective lining is removed at once.

Installing the RACEWAY on a surface

Step 7



Firmly push the RACEWAY on the surface to hold with place.

BEST PRACTICE:

Ensure split area of the RACEWAY is facing correct position throughout installation, as it is easy to accidentally install RACEWAY facing a different position.

Installing the RACEWAY on a surface

Step 8



Carefully make a straight cut on the RACEWAY tube when desired length or position is reached.

RACEWAY around a Flat Corner using Planer Corner Tool

Step 1



To pass the RACEWAY around a corner, please use the Planar Corner Tool.

BEST PRACTICE:

Opening the split slot on bend manager BEFORE installation is highly recommended.

RACEWAY around a Flat Corner using Planer Corner Tool

Step 2



Take off the protective liner and install bend manager as appropriate.

RACEWAY around a Flat Corner using Planer Corner Tool

Step 3



If there is a longer length RACEWAY tube before bend, make a square/perpendicular cut in RACEWAY to flush length with bend manager.

RACEWAY around a Flat Corner using Planer Corner Tool

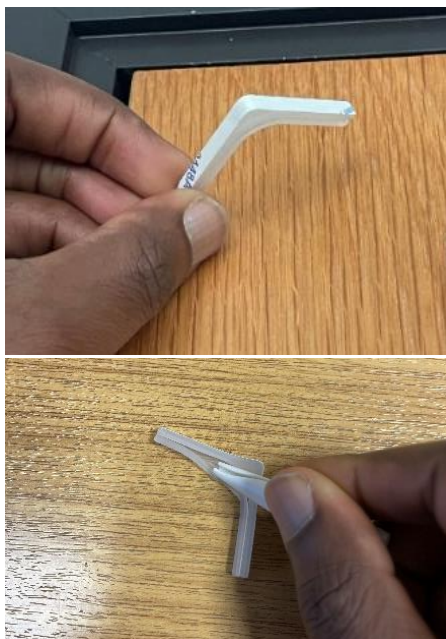
Step 4



To continue installation after bend manager, simply follow RACEWAY Installation steps in section 1 above.

RACEWAY around Internal Bend/ Corner using Planer Corner Tool

Step 1



To pass the RACEWAY around an internal corner, please use the Internal Corner Tool.

BEST PRACTICE:

Opening the split slot on bend manager BEFORE installation is highly recommended.

RACEWAY around Internal Bend/ Corner using Planer Corner Tool

Step 2



Take off the protective liner and install bend manager as appropriate.

RACEWAY around Internal Bend/ Corner using Planer Corner Tool

Step 3



If there is a longer length RACEWAY tube before bend, make a square/perpendicular cut in RACEWAY to flush length with bend manager.

RACEWAY around Internal Bend/ Corner using Planer Corner Tool

Step 4



To continue installation after bend manager, simply follow RACEWAY Installation steps in section 1 above.

RACEWAY around External Bend/ Corner using Edge Corner Tool

Step 1



To pass the RACEWAY around an external corner, please use the edge corner tool.

BEST PRACTICE:

Opening the split slot on bend manager BEFORE installation is highly recommended.

RACEWAY around External Bend/ Corner using Edge Corner Tool

Step 2



Take off the protective liner and install bend manager as appropriate.

RACEWAY around External Bend/ Corner using Edge Corner Tool

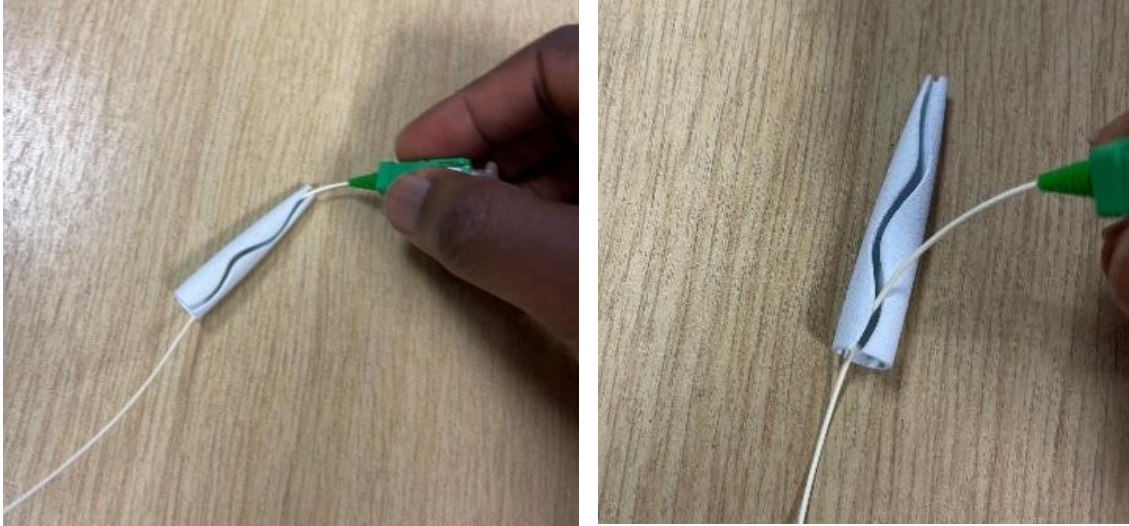
Step 3



To continue installation after bend manager, simply follow RACEWAY Installation steps in section 1 above.

Routing Fibre in the RACEWAY

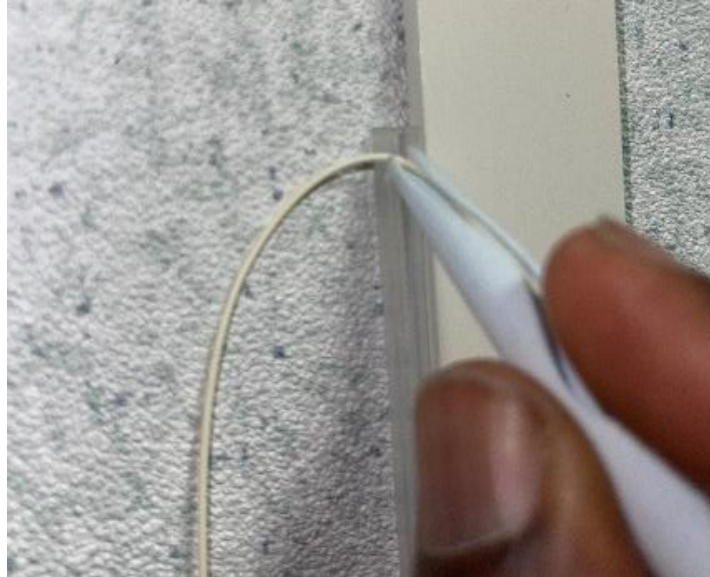
Step 1



For ease of routing fibre along the RACEWAY, first route the fibre into Cable Placing Tool.

Routing Fibre in the RACEWAY

Step 2



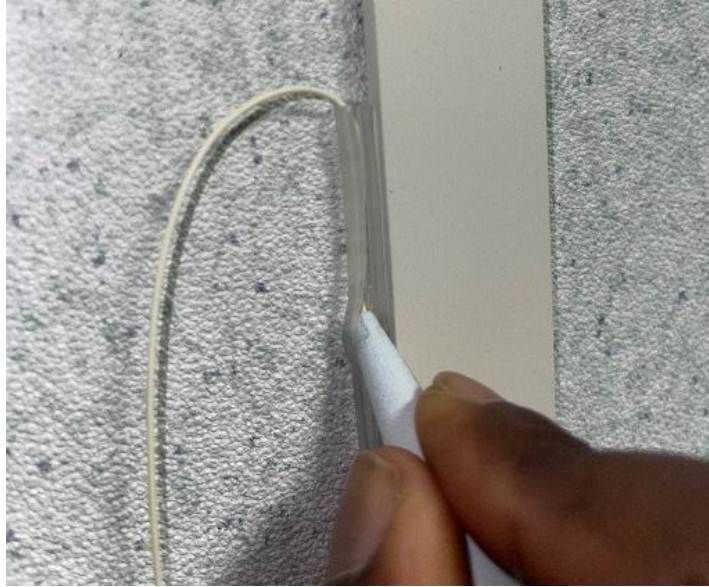
With the placing tool, route fibre into the RACEWAY from the split slot.

BEST PRACTICE:

Slot in cable placing tool to be positioned in the direction that the fibre is being installed to prevent the fibre coming out of the tool.

Routing Fibre in the RACEWAY

Step 3



Run fibre along RACEWAY.

Routing Fibre in the RACEWAY

Step 4



Route Fibre along the flat bend manager where necessary.

Routing Fibre in the RACEWAY

Step 5



Route Fibre along the flat bend manager where necessary.

Routing Fibre in the RACEWAY

Step 6



Route Fibre along the external bend manager where necessary.

Wall Pass - Through

Step 1



Using a drill and 6mm drill bit, drill wall.

Wall Pass - Through

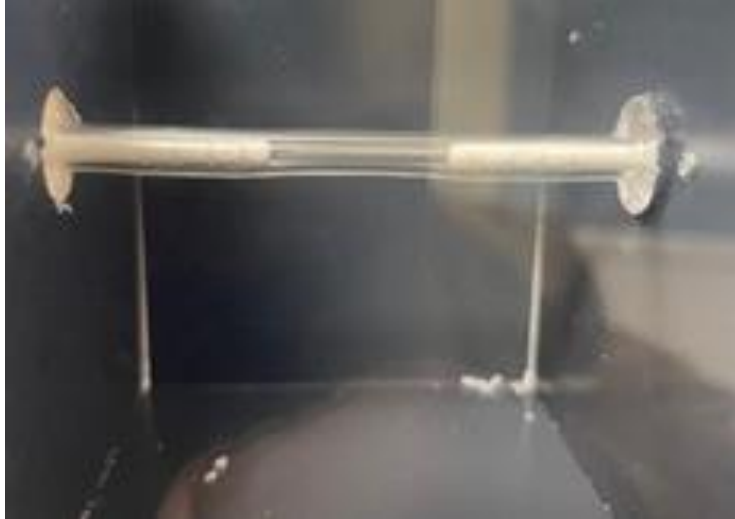
Step 2



Route fibre into wall pass-through from one side to the other.

Wall Pass - Through

Step 3



Where necessary, use the connector to connect both dividers and to protect fibre.

Wall Pass - Through

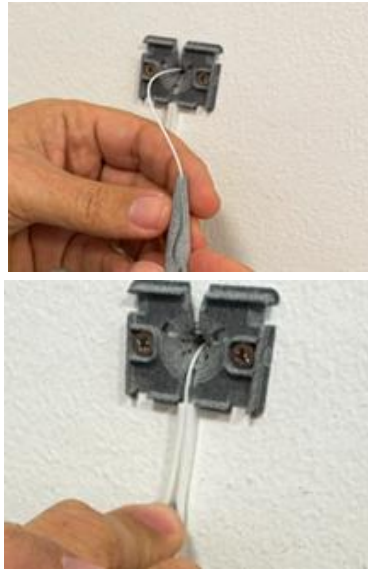
Step 4



Screw the wall pass-through accessory in on both sides.

Wall Pass - Through

Step 5



Following section 1 above, install RACEWAY as appropriate after the divider and route fibre using the fibre routing tool.

Wall Pass - Through

Step 6



Install RACEWAY and route fibre until wall outlet or wall box.

Optical Test

Step 1



A final optical test must be carried out to ensure connectivity across the installation.

Contact Information

	Office	Telephone Fax	email
ASEAN	Singapore	T : +65 6898 3633 T : +65 6265 0707	sales.asean@prysmiangroup.com
AUSTRALIA	Liverpool	T: 1300 300 304 F : 1300 300 307	sales.telecom.au@prysmiangroup.com
CHINA	Wuxi	T : +86 510 68069518 F: +86 510 68069559	tls.china@prysmiangroup.com
DANUBIAN	Slatina	T : +40-349-406.628 F : +40-349-433.484	customercare.romania@prysmiangroup.com
FRANCE	Champs-Sur-Marne	T : +33 1 69 67 72 80	telecom.fr@prysmiangroup.com
ITALIA	Milano	T: +3964493939 F: +3964499264	pqa@prysmiangroup.com
LATAM	Sorocaba	T: +55 15 3212 6801 F: +55 15 3212 6814	sales.telecom.br@prysmiangroup.com
MIDDLE EAST	Dubai	T : +971 4 368 8682 F : +971 4 368 8683	dubaioffice@prysmiancables-me.com
NORDICS	Malmö	T : +46 380 554 265	info.nordic@prysmiangroup.com
NORTH AMERICA	Lexington	T : 800 669 0808	comm.cables@prysmiangroup.com
OPGW & SPECIALS	Vilanova	T: +34 93 811 6181 F: + 34 93 811 6031	opgw@prysmiangroup.com
RUSSIA	Moscow	T: +7 495 777 80 86 F: +7 495 777 80 89	info.ru@prysmiangroup.com
SPAIN & AFRICA	Maliaño	T: +34 942247118 F: +34 942247114	santander.bo@prysmiangroup.com
TURKEY	Istanbul		tpks@prysmiangroup.com
UK	Eastleigh	T: +44 2380 295 000	sales.telecom.uk@prysmiangroup.com

Copyright Prysmian - 2024 You may not copy, reprint, or reproduce in any form the content, either wholly or in part, of this Installation Guide, without the written permission of the copyright owner. Specifications are for product as supplied by Prysmian: any modification or alteration afterwards of product may give different result. The information is believed to be correct at the time of issue. Prysmian reserves the right to amend the information within this Installation Guide without prior notice. This Installation Guide may include inaccuracies, omissions of content and of information and is not contractually valid unless specifically authorised by Prysmian Group. Property of Prysmian Group UK - Uncontrolled when printed Prysmian Cables & Systems Limited, Chickenhall Lane, Eastleigh, Hampshire, SO50 6YU, United Kingdom.

PRYSMIAN HELPLINE: + 44 (0) 7816191633
connectivity.helpline@prysmian.com