

CABLE SEAL KIT: 40mm DUCT
THIS GUIDE IS ONLY VALID IF 40 mm (Nominal) DIAMETER DUCT IS USED
NOTE – To be used in conjunction with Document No: IP116

KIT CONTENTS

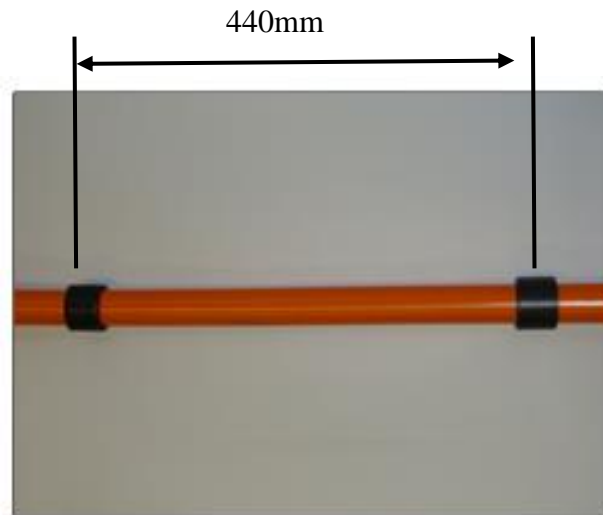
ITEM No.:	DESCRIPTION	QTY
1	SELF AMALGAMATING TAPE 420 mm	x2
2	FOAM CORD 70 mm	x4
3	INSTALLATION INSTRUCTIONS (IP124)	x1

ADDITIONAL ACCESSORIES:	PART No.:	DESCRIPTION
SILICONE SEALANT	XKTSC00272	SILICONE SEALANT

SEE NOTE AT BOTTOM RIGHT BEFORE PROCEEDING

CABLE SEAL KIT: 40mm DUCT

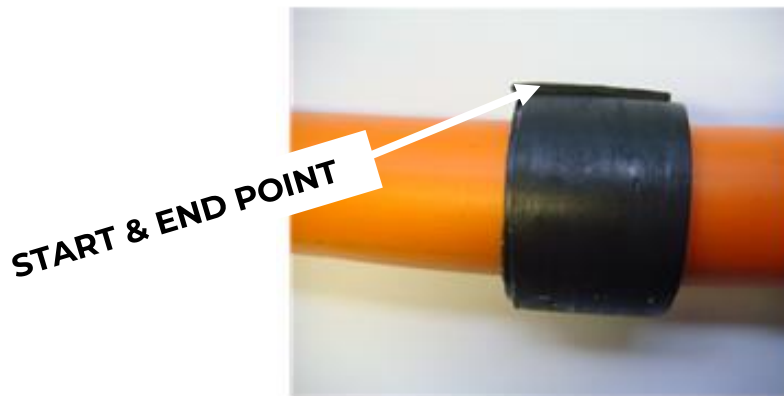
Step 1



WRAP THE SELF AMALGAMATING SEALING TAPE IN TWO POSITIONS WITH A 440mm SPACE BETWEEN EACH. AFTER ONE COMPLETE WRAP PRESS DOWN AT THE POINT IT OVERLAPS TO SEAL COMPLETELY AROUND THE CABLE. CONTINUE TO WRAP THE TAPE UNTIL YOU HAVE COMPLETED 3 TURNS.

CABLE SEAL KIT: 40mm DUCT

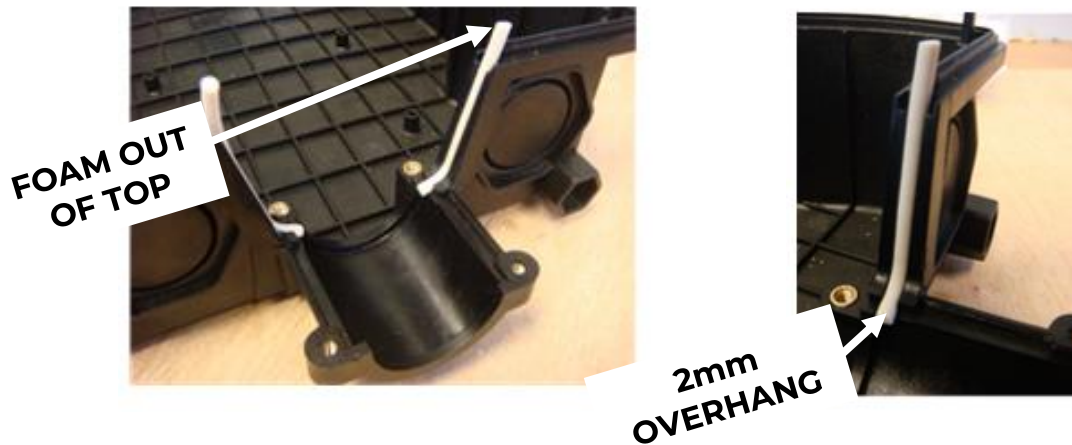
Step 2



THE START & END POINT OF THE TAPE MUST BE AT THE SIDE OF THE CABLE AND ORIENTATED THE SAME BOTH ENDS OF THE CABLE. PRESS ALONG THE END POSITION FIRMLY TO ENSURE THE TAPE STICKS SECURELY TO ITSELF.

CABLE SEAL KIT: 40mm DUCT

Step 3

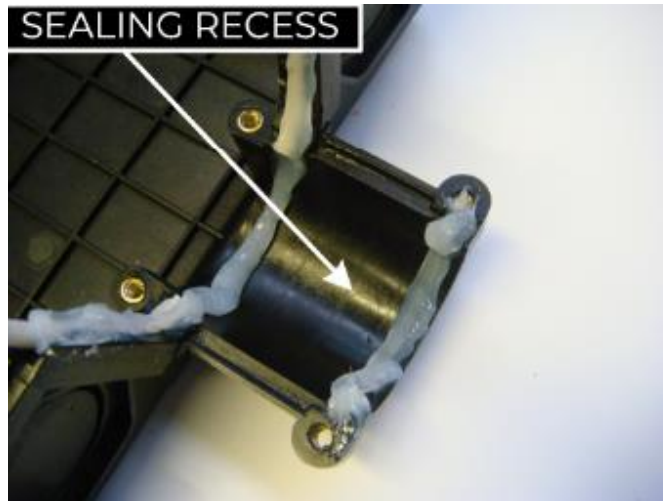


TAKE THE FOAM CORDS AND PUSH THEM FIRMLY INTO THE GROOVES LOCATED AT THE CABLE ENTRY POINT. DO NOT DRAG OR PUSH THE FOAM WITH A SHARP INSTRUMENT AS THIS WILL AFFECT THE SEAL INTEGRITY.

NOTE – START FITTING THE FOAM AT THE BOTTOM WITH APPROXIMATELY 2mm PROTRUDING INTO THE SEALING RECESS. EXCESS FOAM WILL PROTRUDE OUT OF THE TOP AT THIS STAGE WHICH IS NORMAL.

CABLE SEAL KIT: 40mm DUCT

Step 4



APPLY A CONSTANT BEAD OF SILICON DOWN THE FOAM CORD AT EACH SIDE AND CONTINUE INTO THE SEALING RECESS.

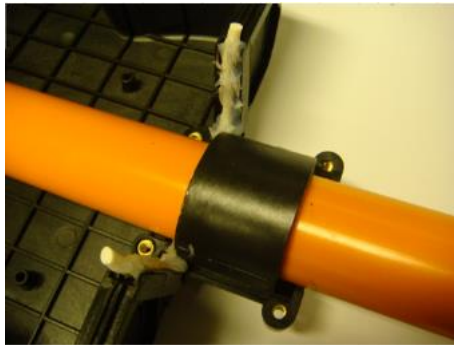
ANOTHER BEAD OF SILICON IS ALSO REQUIRED AT THE FRONT OF THE SEALING RECESS AS SHOWN IN THE PHOTO.

REPEAT THIS OPERATION AT THE OTHER END.

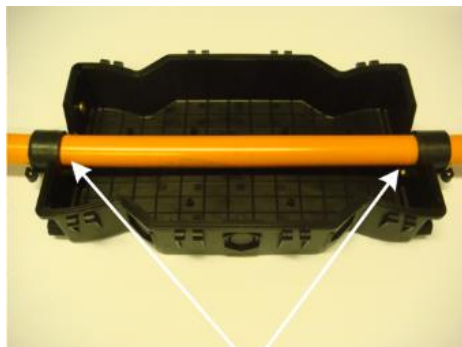
CABLE SEAL KIT: 40mm DUCT

Step 5

POSITION TDC UNDER CABLE AND ALIGN SO THAT THE PREVIOUSLY WRAPPED TAPE FITS CENTRALLY INTO THE SEALING RECESS AT BOTH ENDS.



ENSURE THE TDC IS CENTRAL AND THE TAPE IS CORRECTLY POSITIONED WITHIN THE SEALING RECESS AT BOTH ENDS.



CABLE SEAL KIT: 40mm DUCT

Step 6

ENSURE THE TAPE END POSITION IS APPROXIMATELY IN LINE AND LEVEL WITH THE EDGE OF THE SEALING RECESS.



PUSH THE TAPE FIRMLY INTO THE TDC SEALING RECESS AT BOTH ENDS. THIS WILL PARTIALLY BED THE TAPE INTO THE RECESS AND ASSIST WHEN ASSEMBLING THE IN-LINE CLAMPS.



CABLE SEAL KIT: 40mm DUCT

Step 7



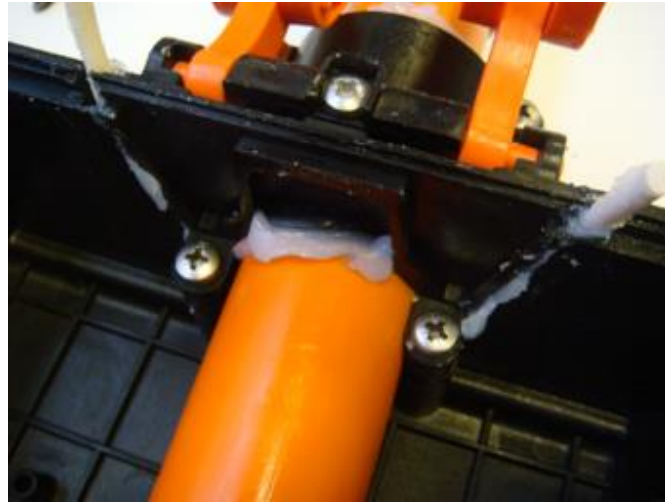
TAKE THE IN-LINE CLAMP AND APPLY A CONSTANT BEAD OF SILICON DOWN EACH SIDE AND CONTINUE INTO THE SEALING RECESS.

ANOTHER BEAD OF SILICON IS ALSO REQUIRED AT THE FRONT OF THE SEALING RECESS AS SHOWN IN THE PHOTO.

REPEAT THIS OPERATION ON THE OTHER IN LINE CLAMP.

CABLE SEAL KIT: 40mm DUCT

Step 8



PUSH THE IN-LINE CLAMP INTO POSITION. ENSURE IT FITS CENTRALLY BETWEEN THE FOAM CORD EITHER SIDE TAKING CARE NOT TO MOVE THEM OUT OF POSITION.

PUSH DOWN FIRMLY AND EQUALLY SO THAT THE IN-LINE CLAMP IS BEDDED INTO THE AMALGAMATING TAPE WHICH WILL MAKE IT EASIER TO FIT THE SCREWS.

REPEAT THIS OPERATION AT THE OTHER END.

USING THE 8 X M5 SCREWS (4 AT EACH END) SECURE THE IN-LINE CLAMPS IN POSITION.

NOTE – THE SCREWS SHOULD BE FITTED IN STAGES AND TIGHTENING ALTERNATED SO THAT THE IN-LINE CLAMPS ARE SECURED EQUALLY ONTO THE FOAM CORD AND THE SEALING TAPE.

BEFORE FULLY TIGHTENING ALL SCREWS, THE FOAM CORD MUST BE CENTRAL TO THE SEALING RIB THAT RUNS ALONG THE TOP OF THE IN-LINE CLAMP AND TDC BASE

CABLE SEAL KIT: 40mm DUCT

Step 9



WHEN ALL SCREWS ARE FULLY TIGHTENED IT IS NORMAL TO SEE EXCESS SEALING TAPE AND SILICON SQUEEZED OUT AROUND THE SEALING AREAS BOTH INSIDE AND OUTSIDE THE BOX.

ANY EXCESS SHOULD BE ALLOWED TO SET AS IT IS AND NOT REMOVED.

CABLE SEAL KIT: 40mm DUCT

Step 10



REMOVE THE EXCESS LENGTH OF FOAM CORD AT EACH OF THE FOUR POSITIONS USING SCISSORS TO CUT IT FLUSH WITH THE TOP SEALING RIB.

ENSURE THE FOAM CORD REMAINS CENTRAL AFTER CUTTING.

NOTE – DOCUMENT No: IP116 TUBE DISTRIBUTION CLOSURE INSTALLATION GUIDE SHOULD BE READ BEFORE PROCEEDING WITH THE INSTRUCTIONS IN THIS GUIDE.

ALL OF OF THE INSTRUCTIONS IN THIS GUIDE SHOULD BE USED IN PLACE OF STEPS 3 TO 8 OF DOCUMENT No: IP116