

LAST MILE CONNECTIVITY

Product Catalogue



Last mile connectivity

As a world leader in the telecommunications industry, Prysmian is committed to developing outstanding connectivity solutions capable of managing networks that meet and exceed the demands of today and tomorrow. Our extensive and versatile range of optical connectivity products is designed and assembled in the UK and has made us a Centre of Excellence for connectivity.

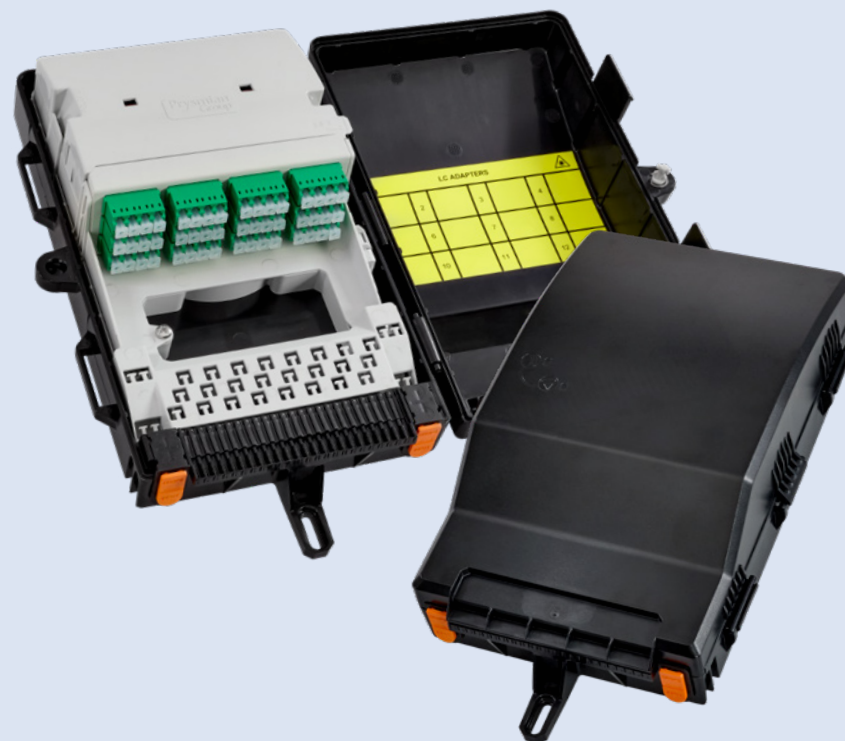
Our range includes multiple solutions that cater specifically for last mile connections, from the network to the customer premises, getting everyone connected everywhere.



Network Deployments [Daisy Chain](#) | [Splice Through](#) | [Branch](#)

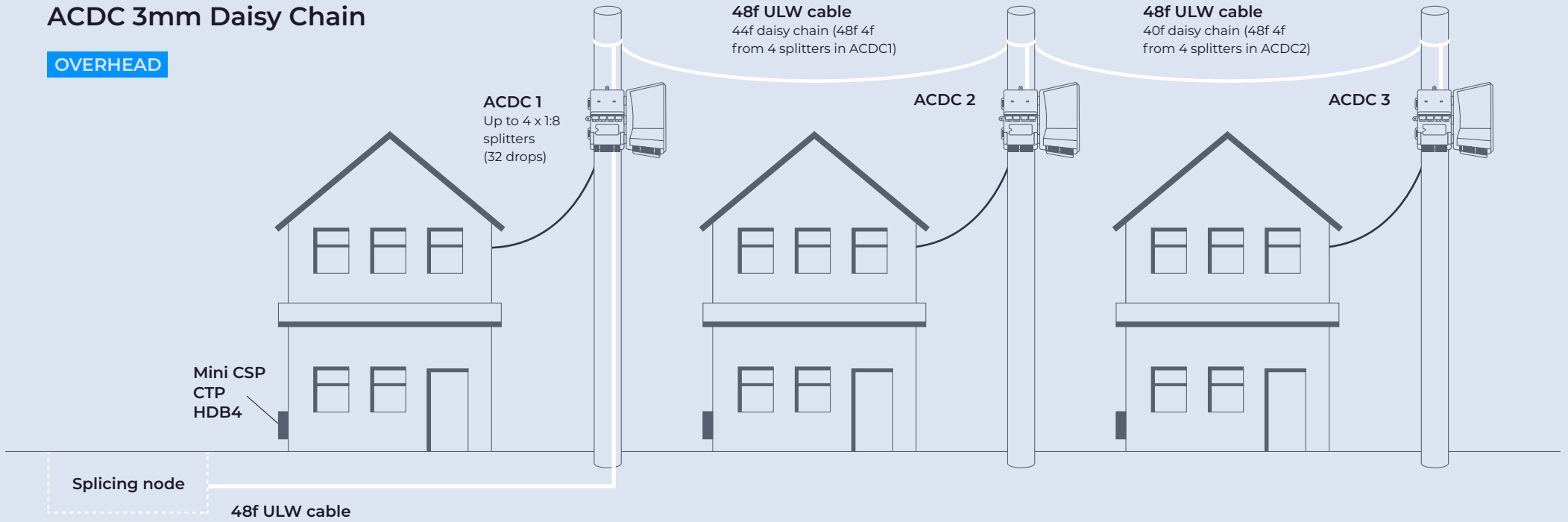
Aerial Casalink Drop Closure (ACDC)

The ACDC is a compact and discreet closure designed for overhead connections from the pole or wall to the customer. The closure is supplied with pre-installed drop cable seals and has lockable sections to prevent unauthorised access. The ACDC is suitable for daisy chain, splice through and branch installations.



ACDC 3mm Daisy Chain

OVERHEAD



Drop Connectivity



Aerial Casalink Drop Closure (ACDC)

→ [Page 15](#)



Preconnectorised 3mm Drop Cable

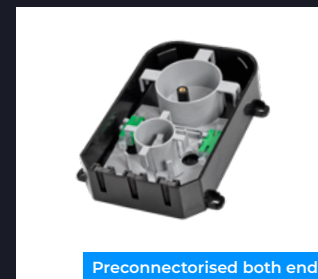
→ [Page 19](#)

Customer Premises



Mini Customer Splice Point (Mini CSP)

→ [Page 23](#)



Customer Termination Point (CTP)

→ [Page 23](#)

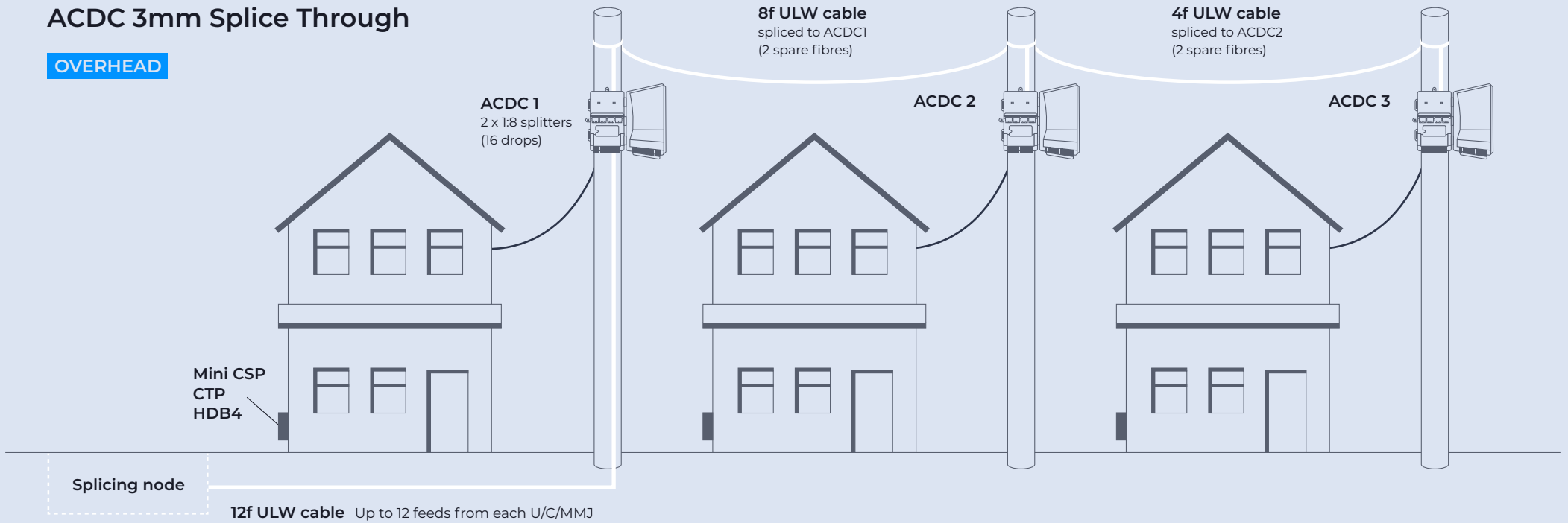


Hybrid Drop Box (HDB4)

→ [Page 24](#)

ACDC 3mm Splice Through

OVERHEAD



Drop Connectivity



Aerial Casalink Drop Closure (ACDC)

→ [Page 15](#)



Preconnectorised 3mm Drop Cable

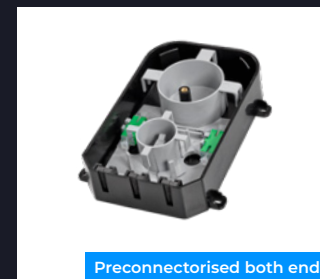
→ [Page 19](#)

Customer Premises



Mini Customer Splice Point (Mini CSP)

→ [Page 23](#)



Customer Termination Point (CTP)

→ [Page 23](#)

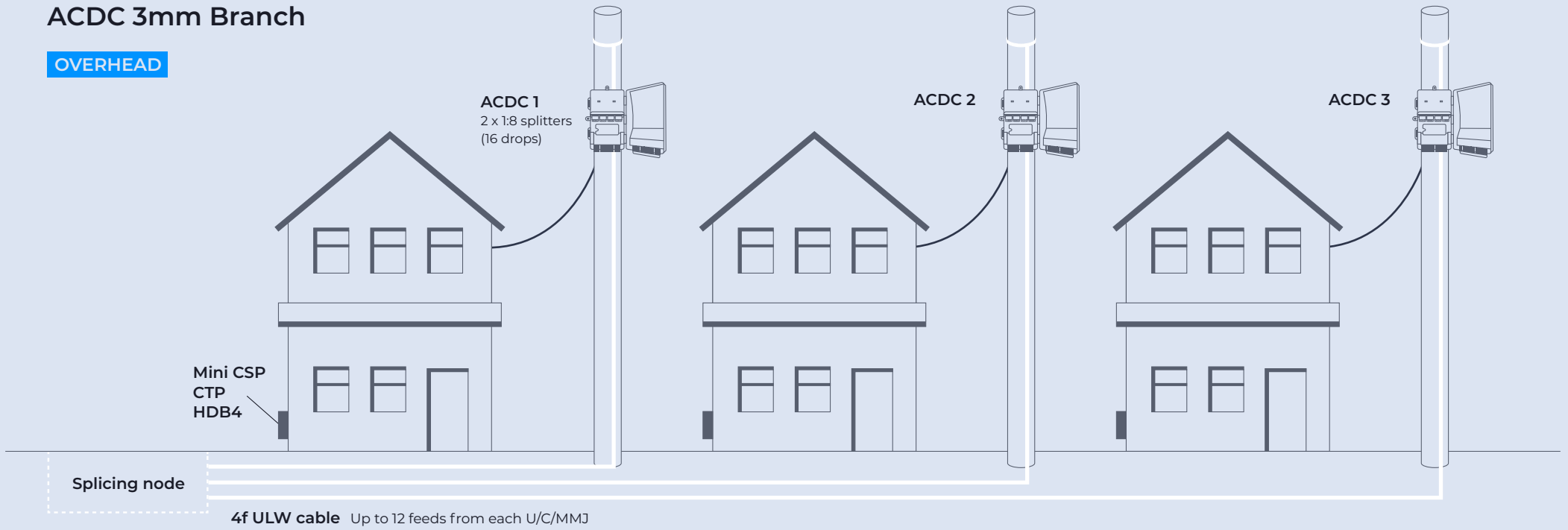


Hybrid Drop Box (HDB4)

→ [Page 24](#)

ACDC 3mm Branch

OVERHEAD



Drop Connectivity



Aerial Casalink Drop Closure (ACDC)

→ [Page 15](#)



Preconnectorised 3mm Drop Cable

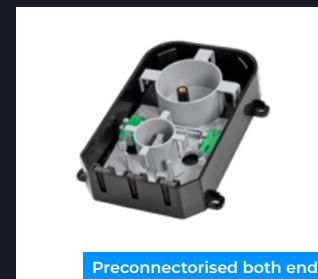
→ [Page 19](#)

Customer Premises



Mini Customer Splice Point (Mini CSP)

→ [Page 23](#)



Customer Termination Point (CTP)

→ [Page 23](#)



Hybrid Drop Box (HDB4)

→ [Page 24](#)

Network Deployments [Overhead](#) | [Underground](#)

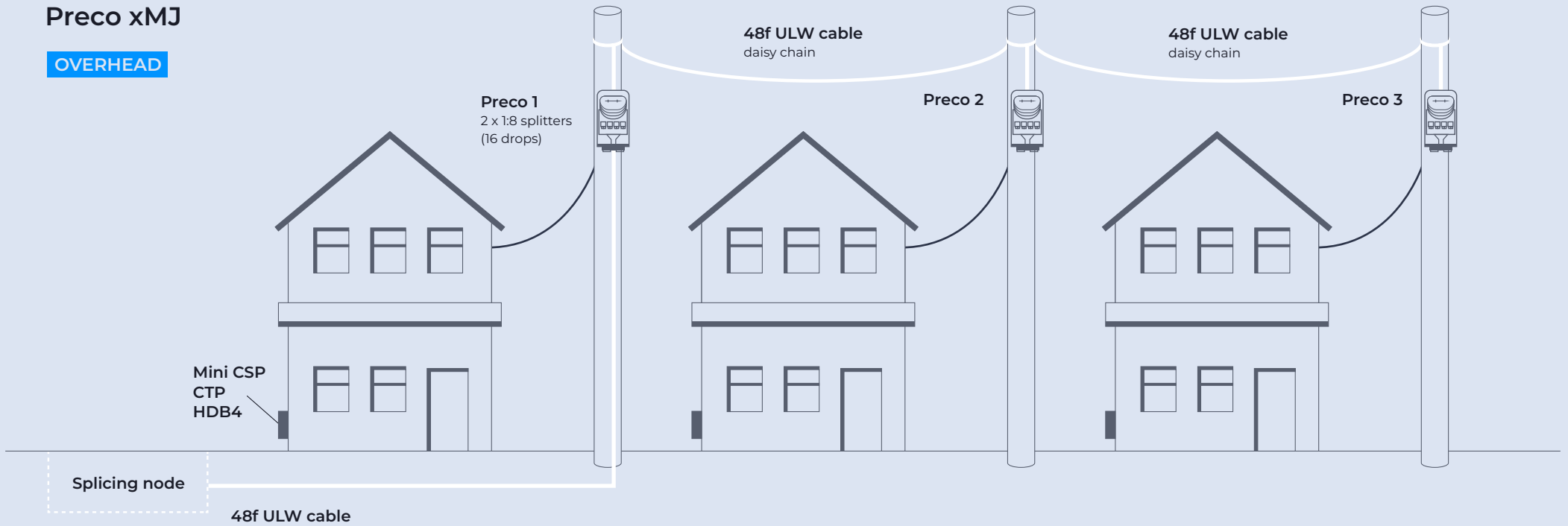
Preco xMJ

The Pre-connectorised xMJ closure range (UMJ/CMJ/MMJ) is specially designed for the splicing and patching of optical cables. The joint is supplied for up to 16 drops (UMJ), 24 drops (CMJ) and 48 drops (MMJ). The combination of capacity and compact size makes this joint ideal for use as a final drop solution in either overhead or underground installations.



Preco xMJ

OVERHEAD



Drop Connectivity



Preco xMJ

→ Page 15



Preconnectorised 3mm Drop Cable

→ Page 19



Preconnectorised UDS1 5mm Drop Cable

→ Page 19

Customer Premises



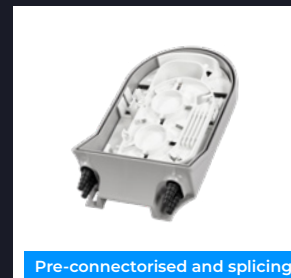
Mini Customer Splice Point (Mini CSP)

→ Page 23



Customer Termination Point (CTP)

→ Page 23



Hybrid Drop Box (HDB4)

→ Page 24

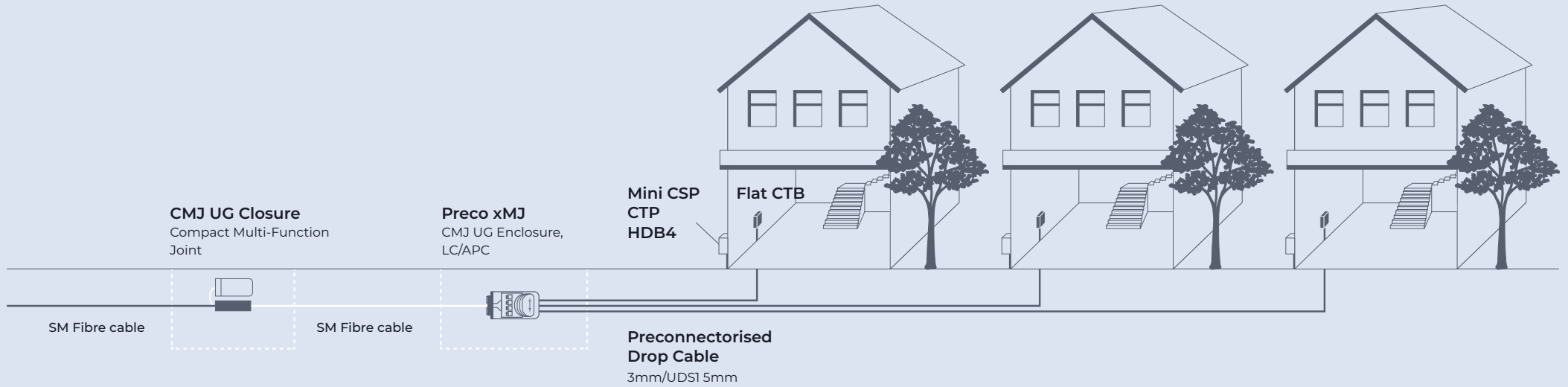


Pre-terminated Flat Compact Termination Box (Flat CTB)

→ Page 24

Preco xMJ

UNDERGROUND



Drop Connectivity

Customer Premises



Preco xMJ

→ [Page 15](#)



Preconnectorised 3mm Drop Cable

→ [Page 19](#)



Flat CTB compatible

Preconnectorised UDSI 5mm Drop Cable

→ [Page 19](#)



For splicing

Mini Customer Splice Point (Mini CSP)

→ [Page 23](#)



Preconnectorised both ends

Customer Termination Point (CTP)

→ [Page 23](#)



Pre-connectorised and splicing

Hybrid Drop Box (HDB4)

→ [Page 24](#)



Internal only

Pre-terminated Flat Compact Termination Box (Flat CTB)

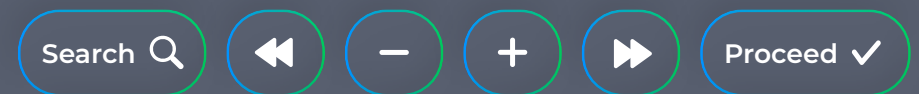
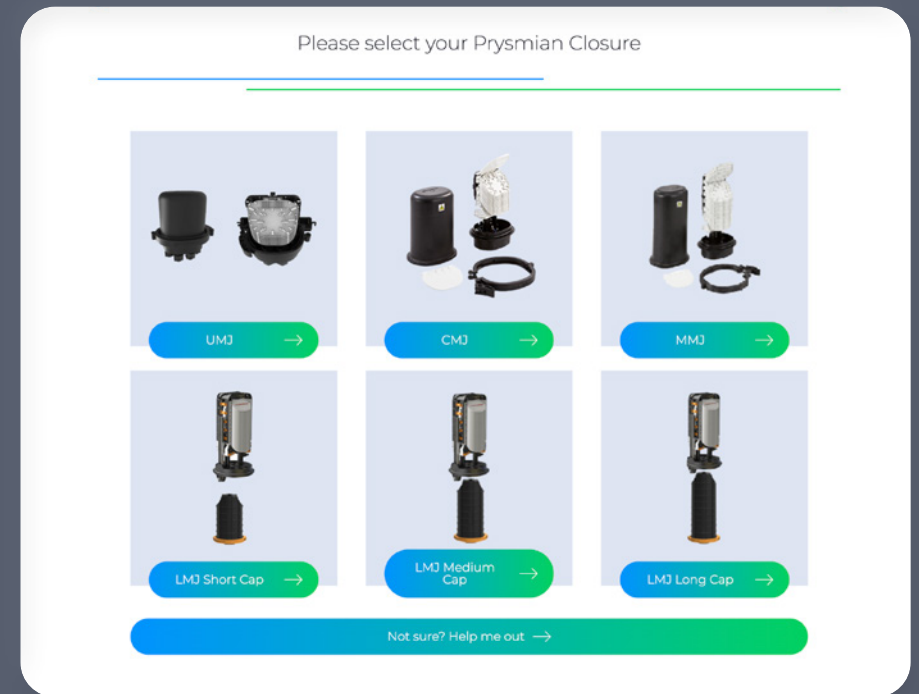
→ [Page 24](#)

Prysmian Connectivity Selector Tool



Take the guesswork out of choosing connectivity products with the Prysmian Connectivity Selector Tool. Designed to save you time and effort, the convenient web tool calculates and recommends the correct closure based on your individual requirements.

The easy-to-use tool helps you to configure the right components and accessories to customise your fibre closure. With just a few clicks, you will find the right product for your fibre optic installation, and you can even request a quote from our sales team.



Scan the QR code to start your calculations
uk.prysmian.com/connectivity_tool

Network Deployments [Branch Splitter \(OH\)](#) | [MPO Daisy Chain \(OH\)](#) | [Feeder & MOBRA Mounting \(UG\)](#)

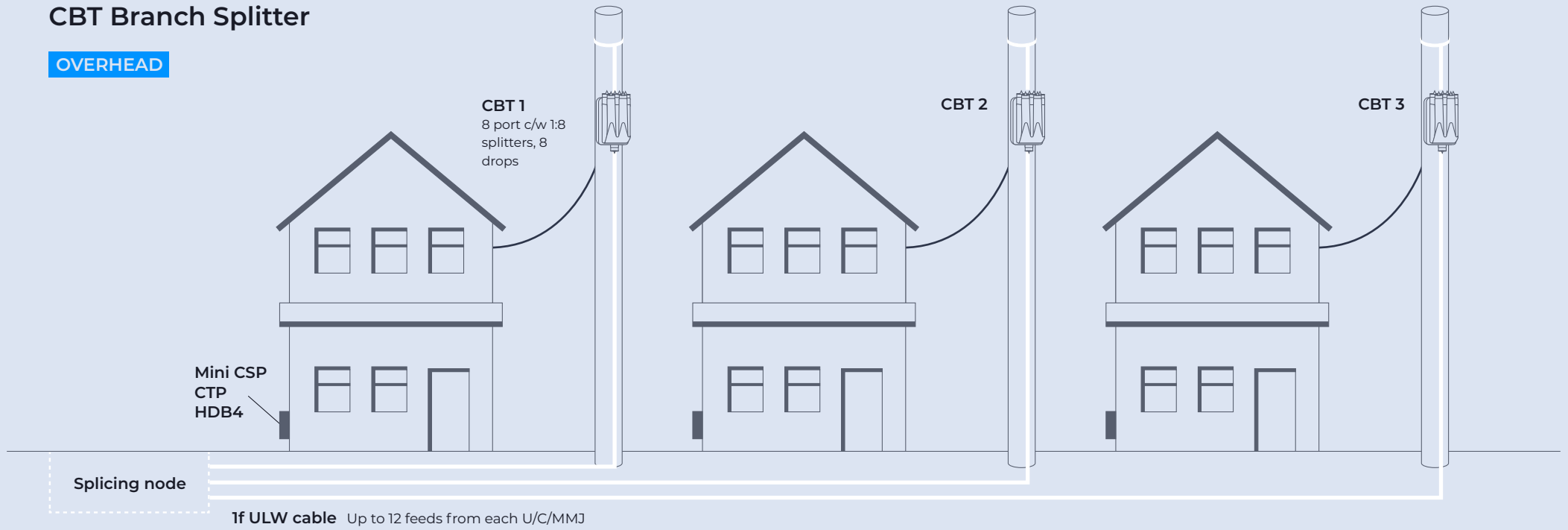
CasaLink Block Terminal (CBT)

Designed for quick and easy installations, the CBT is a pre-connectorised closure developed for use in external environments with an IP rating of IP68. The CBT closure can be supplied with splitters or a feeder cable and is suitable for overhead or underground installations. The drop ports can be oriented upwards or downwards on the pole, and a separate mounting bracket is supplied to make overhead installations easier. The CBT closure is suitable for branch and MPO daisy chain installations.



CBT Branch Splitter

OVERHEAD



Drop Connectivity



CasaLink Block Terminal (CBT)

→ [Page 16](#)



CBT Ultra Lightweight Drop Cable

→ [Page 20](#)

Customer Premises



Mini Customer Splice Point (Mini CSP)

→ [Page 23](#)



Customer Termination Point (CTP)

→ [Page 23](#)

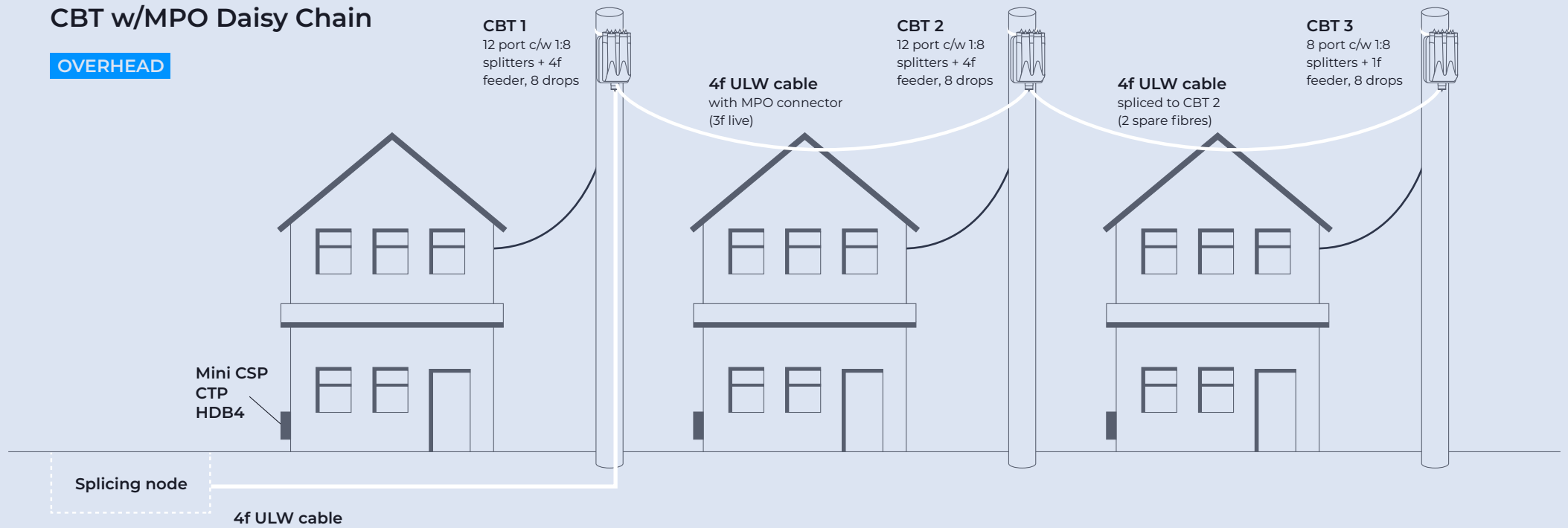


Hybrid Drop Box (HDB4)

→ [Page 24](#)

CBT w/MPO Daisy Chain

OVERHEAD



Drop Connectivity



CasaLink Block Terminal (CBT)

→ [Page 16](#)



CBT Ultra Lightweight Drop Cable

→ [Page 20](#)

Customer Premises



Mini Customer Splice Point (Mini CSP)

→ [Page 23](#)



Customer Termination Point (CTP)

→ [Page 23](#)

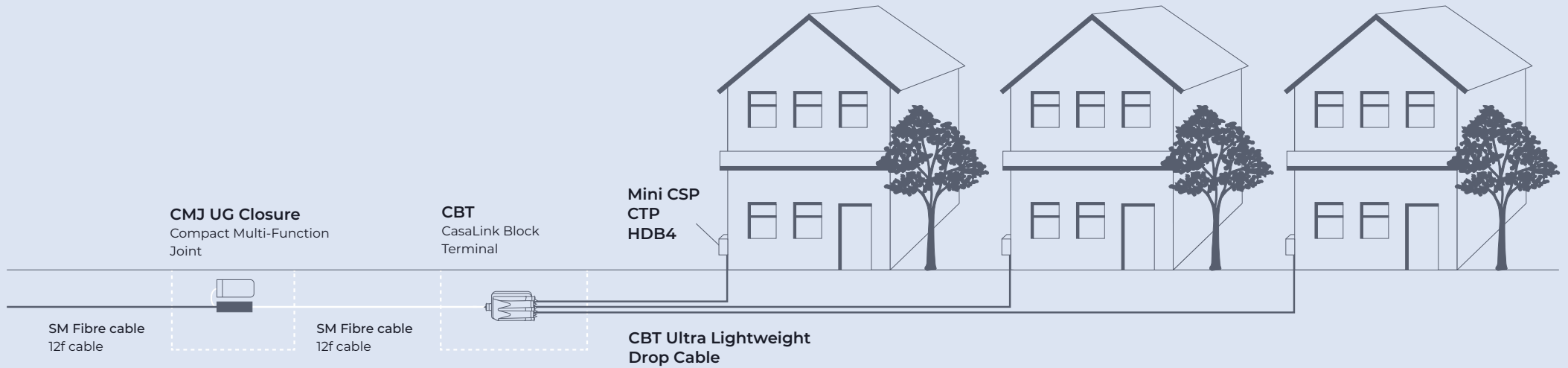


Hybrid Drop Box (HDB4)

→ [Page 24](#)

CBT w/Feeder & MOBRA Mounting

UNDERGROUND



Drop Connectivity



CasaLink Block Terminal (CBT)

→ [Page 16](#)



CBT Ultra Lightweight Drop Cable

→ [Page 20](#)

Customer Premises



For splicing

Mini Customer Splice Point (Mini CSP)

→ [Page 23](#)



Preconnectorised both ends

Customer Termination Point (CTP)

→ [Page 23](#)



Pre-connectorised and splicing

Hybrid Drop Box (HDB4)

→ [Page 24](#)

Product Ranges

Drop Connectivity

Prysmian offers a range of versatile and compact products specifically designed to connect fibre from the access network to the customer. Our drop connectivity solutions are suitable for overhead or underground installations.

Aerial Casalink Drop Closure

Preco xMJ (UMJ/CMJ/MMJ)

CasaLink Block Terminal

Compact CasaLink Block Terminal





Scan the QR code
for more information

Aerial Casalink Drop Closure (ACDC)

A compact and discreet closure specially designed for secure and seamless aerial customer drop installations. Supplied with knockout ports for drop cables and connectors, splitters or pigtails, the closure allows for easy installation and maintenance.

The ACDC closure can be pole or wall mounted, and its robust construction means it can withstand weather and environmental challenges.

→ Customer connection cables

32 (24) x 3mm LC (SC)

16 (16) x 5mm LC (SC)

→ Splice capacity

48



1:4 splitter 1:8 splitter 1:16 splitter



Scan the QR code
for more information

Preco xMJ (UMJ/CMJ/MMJ)

The Preconnectorised xMJ closure range (UMJ/CMJ/MMJ) is the ideal solution for connecting customers to the network overhead or underground.

The connectorised pigtails or splitters are factory fitted and each tray can accommodate up to 12 spliced fibres.

Ultra Compact Multi-Function Joint

→ Maximum capacity

4 single element trays 48 fibres
(accommodate 12 splices)

→ Drop cable capacity

8SC/16LC

Compact Multifunction Joint

→ Maximum capacity

3 single element trays 36 fibres
(accommodate 12 splices)

→ Drop cable capacity

12SC / 24LC

Medium Multi-function Joint

→ Maximum capacity

6 single element trays 72 fibres
(accommodate 12 splices)

→ Drop cable capacity

24SC / 48LC



1:4 splitter 1:8 splitter 1:16 splitter





Scan the QR code
for more information

CasaLink Block Terminal (CBT)

The CBT is a pre-connectorised closure designed for use in external environments with a compact design that simplifies installation and maintenance.

The closure can be supplied with up to 350m of cable pre-installed into the box terminated onto SC/AC adapters. Alternatively, the CBT can be supplied with splitters installed.

→ Available in sizes

4, 8 and 12 drops

→ Max capacity (fibres)

12

→ Max number of drop cables

12



Scan the QR code
for more information

Compact CasaLink Block Terminal (Compact CBT)

This pre-connectorised, ultra small closure features an extremely compact design and has all the benefits of the standard CBT. It is ideal for installation inside hollow poles.

The Compact CBT can be supplied with various lengths of cable pre-installed into the box terminated on to SC adapters. Alternatively, the compact CBT can be supplied with a 1:4 or 1:8 splitter installed.

→ Max capacity (fibres)

12

→ Max number of drop cables

12



| Product | Max drops / connectors | Drop cable compatibility | Splitters | Input cable | Splice capacity | UG / OH |
|-----------------|------------------------|--------------------------|----------------------------------|-------------|--------------------|---------|
| Aerial Casalink | 32LC 16SC | 3mm | Up to 4x 1:8 | ULW / Any | 48 | OH |
| Drop Closure | 16LC 16SC | 5mm | 2x 1:16 | | | |
| Preco xMJ | UMJ 8SC 16LC | 3mm | UMJ 4 | Any | UMJ 48 | UG & OH |
| | CMJ 12SC 24LC | 5mm | CMJ 3 | | CMJ 36 | |
| | MMJ 24SC 48LC | | MMJ 6 | | MMJ 72 | |
| CasaLink Block | 4SC | CBT ULW | Up to 1:12 balanced / unbalanced | ULW / Drop | 1 (factory fitted) | UG & OH |
| Terminal | 8SC | 6mm | | | | |
| | 12SC | | | | | |

Product Ranges

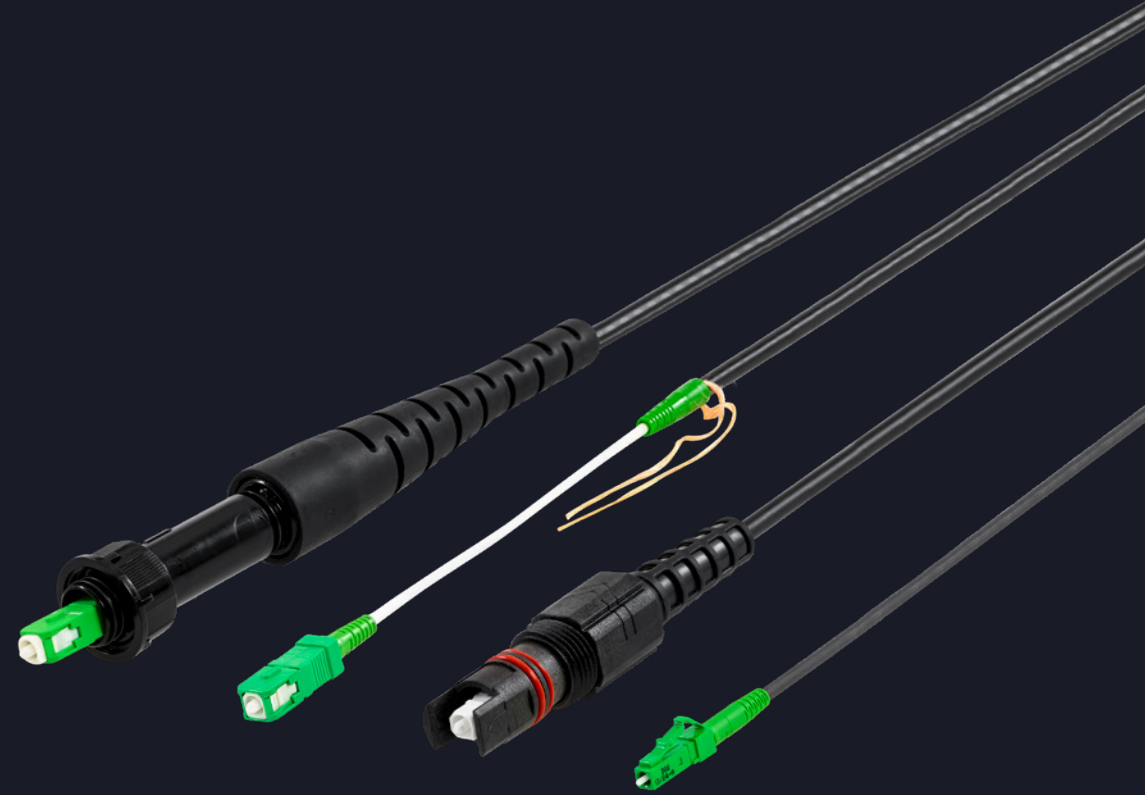
Drop Cables

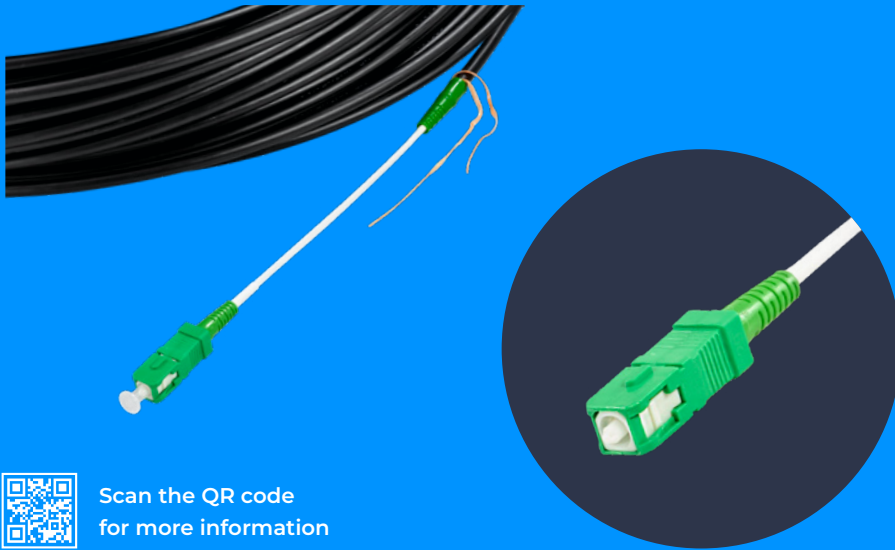
Drop cables play an important role in the FTTH network, linking the drop connectivity products to the customer premises. We have a range of drop cables to suit every scenario.

Pre-connectorised UDS1 5mm Drop Cable

Pre-connectorised 3mm Drop Cable

CBT Ultra Lightweight Drop Cable





Scan the QR code
for more information

Preconnectorised UDS1 5mm Drop Cable

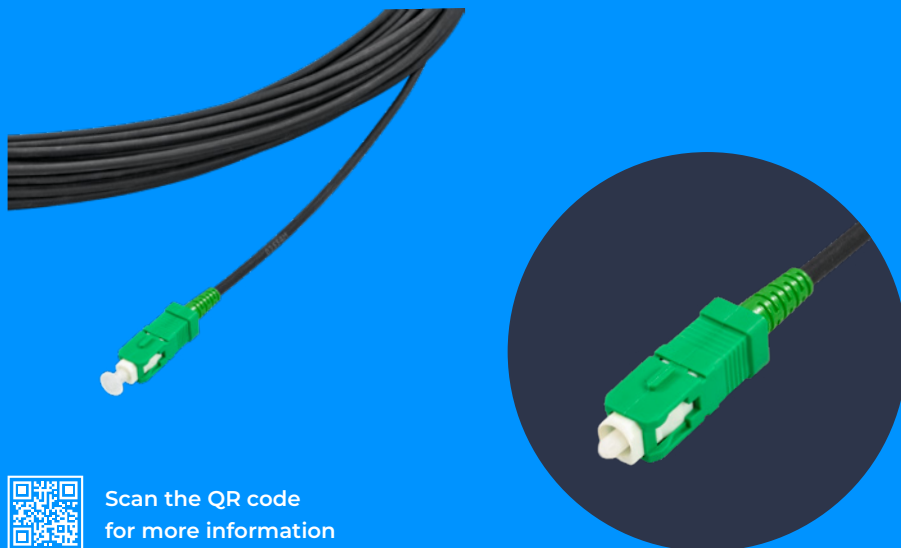
The pre-connectorised UDS1 Drop Cable can be used indoors and outdoors and is suitable for overhead and underground use. It is specially designed to allow minimal effort during installation.

The external sheath can be removed easily to reveal a white inner low smoke sheath for internal use. The UDS1 can be supplied in various lengths and can be terminated at a single end or at both ends.

→ Maximum break load
< 2000N

→ Available in a range of lengths
10m to 200m

PIA
ready



Scan the QR code
for more information

Pre-connectorised 3mm Drop Cable

Suitable for overhead and underground applications, the pre-connectorised 3mm indoor/outdoor drop cable is ideal for situations where a discreet cable is needed.

It can be terminated at a single end or at both ends and is PIA ready.

→ Maximum break load
< 2000N

→ Available in a range of lengths
10m to 200m

PIA
ready



Scan the QR code
for more information

CBT Ultra Lightweight Drop Cable

CasaLink Block Terminal (ULW) Drop Cable has been developed specially for the CBT system. The terminated end is secured in the CBT box and the unterminated end is spliced at the customer premises.

The cable is suitable for overhead and underground applications. Available in a range of lengths using various cable designs to suit the local market.

→ Maximum break load
< 2000N

→ Available in a range of lengths
10m to 200m

PIA
ready

| Product | Diameter | Fibre type | Sheath | Termination options | Both end termination | Supply method |
|------------------------------------------|-----------|------------|--------------------------|---------------------|----------------------|---------------------------------------|
| Pre-connectorised UDS1 5mm Drop Cable | 5mm | G657.A2 | Internal / external LSOH | SC, LC or OptiTap | Yes | Coiled on a cardboard ring |
| Pre-connectorised 3mm Drop Cable | 3mm | G657.A2 | External LSOH | SC, LC or OptiTap | Yes | Coiled on a cardboard ring |
| CBT Ultra Lightweight Drop Cable | 6mm round | G657.A1 | HDPE or LSOH | SC, MPO | No | Coiled on a cardboard ring or reel |

Product Ranges

OptiTap Components

OptiTap Pre-connectorised 5mm Drop Cable

Designed for quicker, easier installations, our OptiTap components are the ideal solution to get homes connected faster.



Scan the QR code
for more information

OptiTap Pre-connectorised 5mm Drop Cable

The pre-connectorised OptiTap drop cable is available in a range of lengths using various cable designs to suit the local market.

Either cable end can be pre-terminated with hardened or standard connectors.

→ Connector type

SC/APC
LC
MPO

→ Available in a range of lengths

30m to 500m

PIA
ready

Product Ranges

Customer Premises Products

Our versatile range of customer premises products is designed to get homes and businesses connected faster. Whether you are looking for splice or pre-connectorised solutions, we have the products for the job.

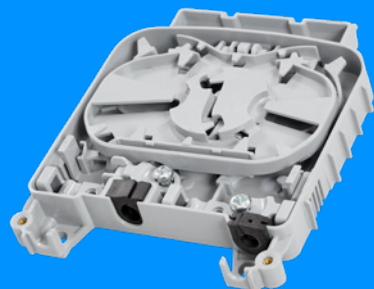
Customer Termination Point

Mini Customer Splice Point

Hybrid Drop Box

Pre-terminated Flat Compact Termination Box





Scan the QR code
for more information

Mini Customer Splice Point (mCSP)

The External Mini CSP is designed to get the customer connected fast. Its ultra compact design allows it to be installed easily and quickly.

The Mini CSP can be used in fibre-to-the-premises applications with integral splicing. It is wall mountable with a single entry position for an input cable.

→ Max capacity (fibres)

2

→ Max number of drop cables

2

→ Max diameter of drop cables

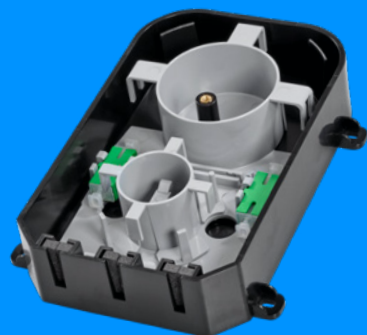
- Input max 6mm (round)

- 8.5x4.5mm (flat)

- Drops 4.8mm



EXTERNAL



Scan the QR code
for more information

Customer Termination Point (CTP)

Designed to get the customer connected faster, the CTP can be used for fibre-to-the-premises applications and has an integral splicing area, as well as space for up to 2 SC Simplex or LC Duplex adapters.

It features excess storage of up to 10m of 3mm cables and 25m of blown fibre units up to 1.25mm.

→ Max number of connectors

4LC

2SC

→ Max number of drop cables

4

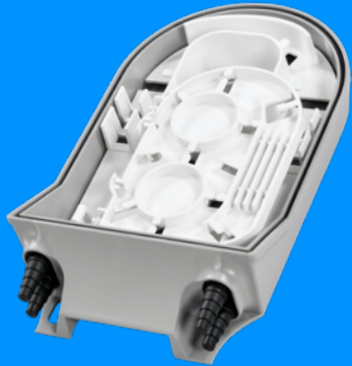
→ Diameter of cables

- Input max 5mm



EXTERNAL





Scan the QR code
for more information

Hybrid Drop Box (HDB4)

The wall mounted HDB4 is used for the splicing of up to four fibres and up to four customer drop cables. It features an additional copper storage area to accommodate a hybrid cable.

The box can be supplied as splice only, or with two duplex LC/APC adapters and four LC/APC pigtails for connectorised drops.

→ Number of cable ports

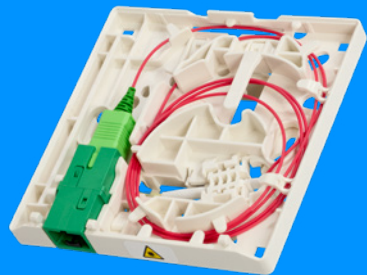
2 input, 4 output (via 2 double grommets)

→ Maximum cable diameter

3mm-7mm



EXTERNAL



Scan the QR code
for more information

Pre-terminated Flat Compact Termination Box (Flat CTB)

The Flat CTB is designed for internal use in residential and business applications. Supplied with the required length of cable pre-installed in the factory, the Flat CTB eliminates the need for splicing or fitting field mount connectors in the customer premises.

With a depth of 12mm, it has a discreet and slim design. Wall fixings are supplied with the box.

→ Maximum input cable diameter

5mm

→ Number of input cable ports

1

→ Maximum Capacity

1 connector type SC and 1 splice



INTERNAL

| Product | Required space envelope | Connectors | Splices | Slack storage | Colour |
|----------------------------|---------------------------------|------------|---------|---------------|------------------------|
| Mini Customer Splice Point | (h) 97 x (w) 114.5 x (d) 21 mm | - | Up to 2 | No | Grey |
| Customer Termination Point | (h) 185 x (w) 115.5 x (d) 42 mm | SC or LC | Up to 4 | Yes | Black Brown Grey |
| Hybrid Drop Box | (h) 190 x (w) 110 x (d) 40 mm | SC or LC | Up to 4 | Yes | Grey |

Put your trust in Prysmian

We are one of the world's largest producers of telecoms cables and are constantly developing innovative products that meet and exceed the evolving needs of the customer.



With over 140 years' experience in the cable industry, we have the knowledge and expertise to deliver exceptional telecom and connectivity solutions whatever the network type.



We have 30+ manufacturing facilities around the world, meaning our supply chain is unrivalled.



We offer full sales support from enquiry right through to after sales, providing great peace of mind.

Are you ready to future-proof your network? Our dedicated team are here to support you. Get in touch today.

Tel: 02381 680800

Email: sales.telecom.uk@prysmian.com

[➔ uk.prysmian.com/markets/digital-solutions](https://uk.prysmian.com/markets/digital-solutions)

Prysmian Cables & Systems Ltd

Chickenhall Lane, Eastleigh,
Hampshire, SO50 6YU

uk.prysmian.com

Tel: 02381 680800

Email: sales.telecom.uk@prysmian.com



Visit our website for more information:
uk.prysmian.com/markets/digital-solutions

