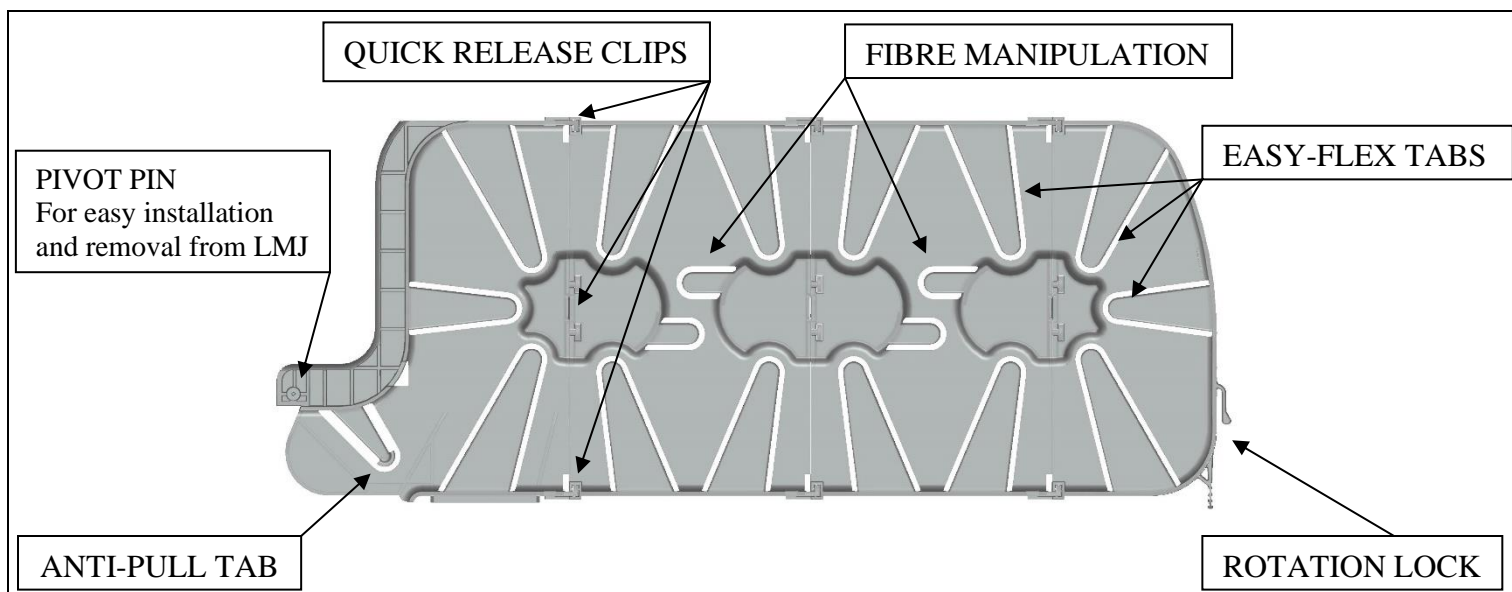


LMJ – MIDSPAN LOOP MANAGER INSTALLATION

Description

This installation procedure is a breakdown of the installation of the MIDSPAN LOOP MANAGER that is used to manage the FIBRE by approved bend radii.

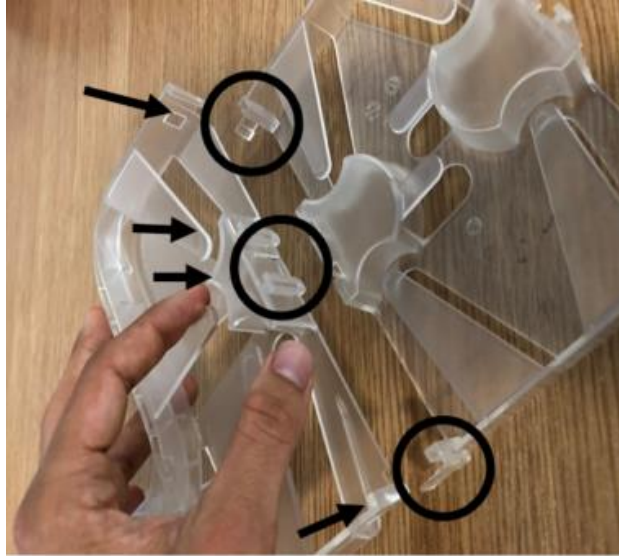
FEATURES



IF THE LOOP MANAGER IS PRE-INSTALLED INTO THE CLOSURE GO TO STEP 5.
IF THE LOOP MANAGER IS SUPPLIED IN A KIT GO TO STEP 2.

LMJ – MIDSPAN LOOP MANAGER INSTALLATION

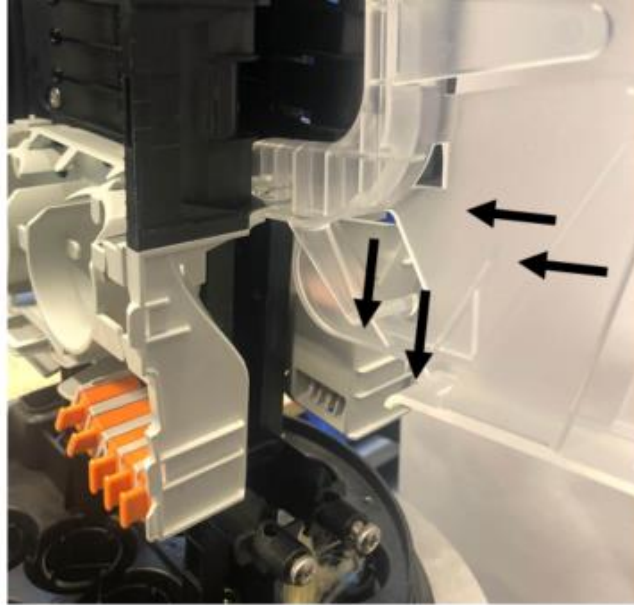
Step 1



- Conclude which size manager is going to be assembled.
- Slide each section of the LOOP MANAGER together by lining up all 4 slots. **NOTE: Make sure that the three clips are secured highlighted by the black circles.**

LMJ – MIDSPAN LOOP MANAGER INSTALLATION

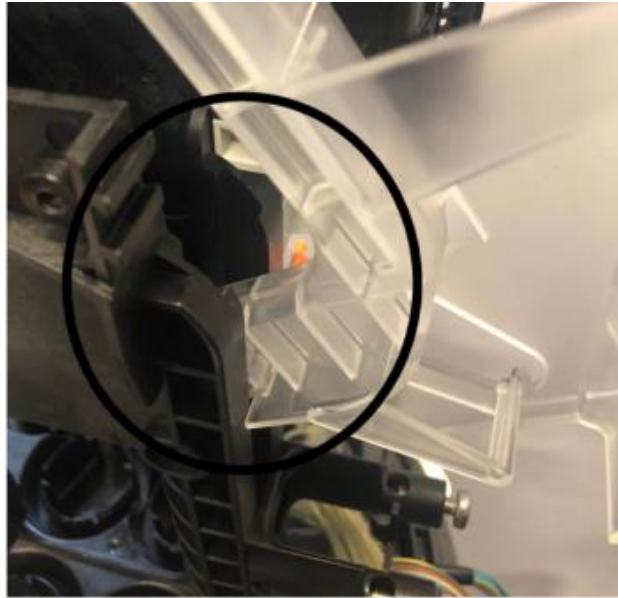
Step 2



- Once the LOOP MANAGER is assembled. You must align the PIVOT PIN of the manager and slot of the LMJ spine.
- **NOTE: The orientation of the Loop manager.**

LMJ – MIDSPAN LOOP MANAGER INSTALLATION

Step 3



- Push the loop manager downwards until the boss bottoms out on the slot, as shown in the picture above.
- **NOTE: The boss is shown fully installed into the slot in the black circle.**

LMJ – MIDSPAN LOOP MANAGER INSTALLATION

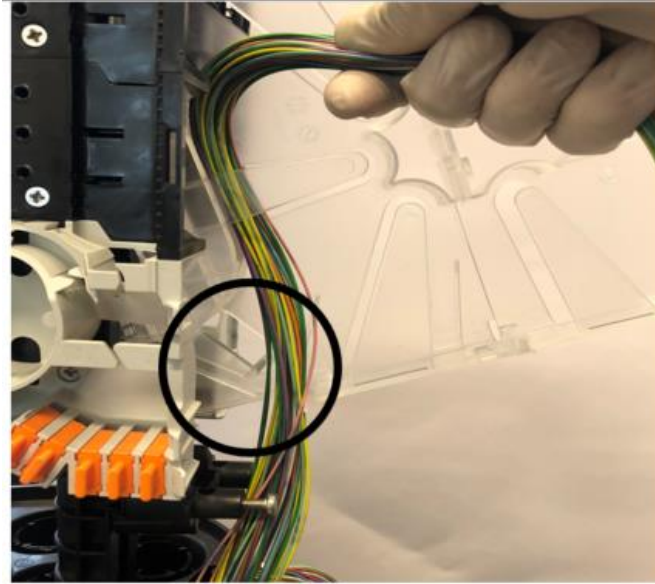
Step 4

Joint Type	Cable Type	Loop Length	Max. Fibre
LMJ Small	LT	3.6m x 12 elements	N/A
LMJ Medium	LT	3.6m x 12 elements (2mm)	144F
LMJ Large	LT	3.8m x 12 elements (2mm)	144F
LMJ Small	FT	3.6m x 48 elements	576F
LMJ Medium	FT	3.6m x 60 elements	720F
LMJ Large	FT	3.8m x 60 elements	720F

**Note: LT= LOOSE TUBE
FT= FLEX TUBE**

LMJ – MIDSPAN LOOP MANAGER INSTALLATION

Step 5



- With the loop manager in its loading position, start to route the elements around the outside of the Anti – pull tab shown with the black circle.

LMJ – MIDSPAN LOOP MANAGER INSTALLATION

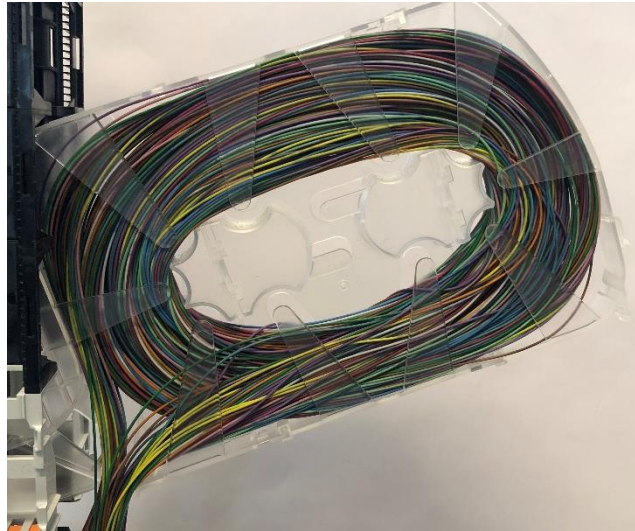
Step 6



- Route the elements around the outside of the mid span loop manager in a clockwise direction.

LMJ – MIDSPAN LOOP MANAGER INSTALLATION

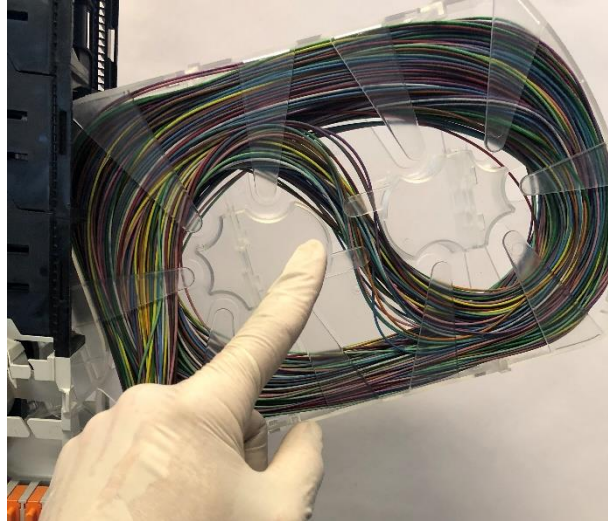
Step 7



- Ensure each loop is routed tightly within the previous.
- Continue to route the elements until all elements are inside of the loop manager.

LMJ – MIDSPAN LOOP MANAGER INSTALLATION

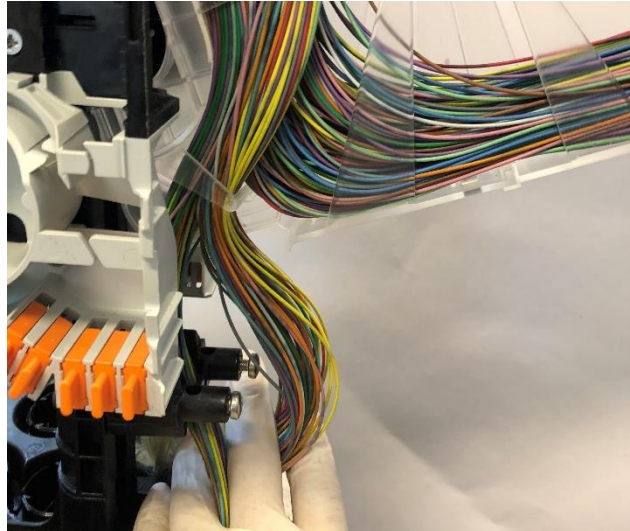
Step 8



- You can route elements around the central mandrel to take up slack.

LMJ – MIDSPAN LOOP MANAGER INSTALLATION

Step 9



- Separate the elements going into the manager from the elements going out of the manager using the cable anchor plate.

LMJ – MIDSPAN LOOP MANAGER INSTALLATION

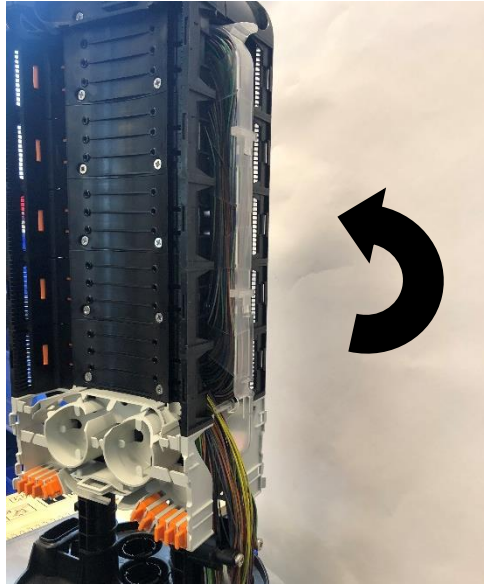
Step 10



- Flex the anti- pull tab to retain the elements, using this ensures elements are not strained.

LMJ – MIDSPAN LOOP MANAGER INSTALLATION

Step 11



- Rotate the loop manager back into the closure. Being careful not to strain the elements.

LMJ – MIDSPAN LOOP MANAGER INSTALLATION

Step 12



- Replace the cover.

Copyright Prysmian Group - 2023 You may not copy, reprint, or reproduce in any form the content, either wholly or in part, of this Installation Guide, without the written permission of the copyright owner. Specifications are for product as supplied by Prysmian Group; any modification or alteration afterwards of product may give different result. The information is believed to be correct at the time of issue. Prysmian Group reserves the right to amend the information within this Installation Guide without prior notice. This Installation Guide may include inaccuracies, omissions of content and of information and is not contractually valid unless specifically authorised by Prysmian Group. Property of Prysmian Group UK - Uncontrolled when printed Prysmian Cables & Systems Limited, Chickenhall Lane, Eastleigh, Hampshire, SO50 6YU, United Kingdom.

PRYSMIAN HELPLINE: + 44 (0) 78161916333
connectivity.help@prysmiangroup.com

Page 13 of 13