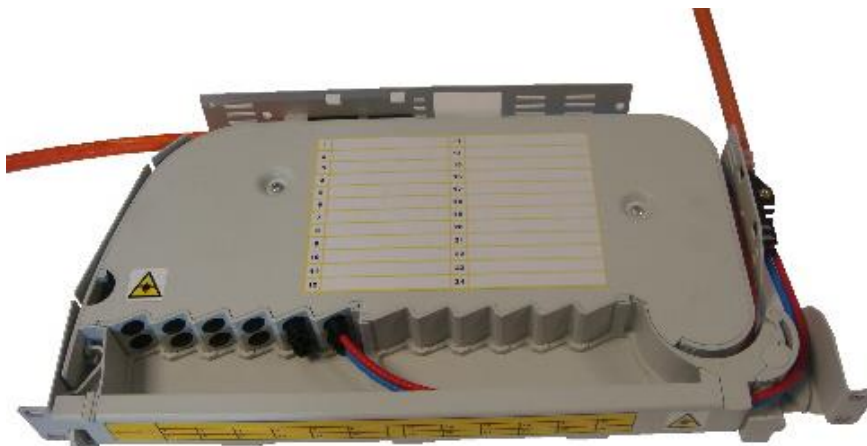


INSTALLATION INSTRUCTION

OAsys® INTERNAL PLANT

12/24 Fibre 1U SRS3000 SPLICE ONLY

Part No. SRS1-200, SRS2 and SRS3 part numbers containing 'module-200'



Description

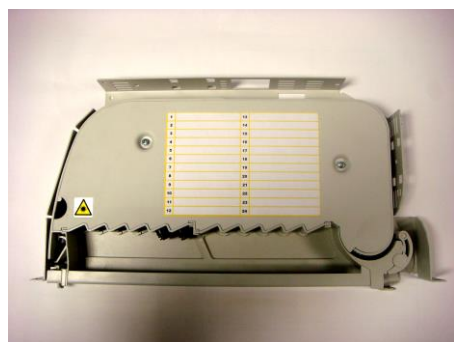
- Suitable for installation into 19" ETSI / ANSI racks, wall mounted cabinets and street-side cabinets.
- The shelf has a capacity of up to 48 fibre splices.
- The shelf is supplied with splice protector holders for 2.2mm heat shrink splice protectors. Crimp splice protectors can also be accommodated by using crimp splice protector holders. Refer to additional items.
- Can accommodate most cable types including blown fibre tube cables.
- Splice module pivots outwards for easy fibre access and maintenance.
- The drop down front panel prevents accidental disconnection of fibre routing tubes during installations.
- All fibres are positively bend managed to a 30mm radius
- Supplied with a large cover label and front panel labels for easy identification and data recording.
- Splice bay is covered with a detachable lid (secured with two screws) to protect the fibres once installed.

Tools and Additional Items Required

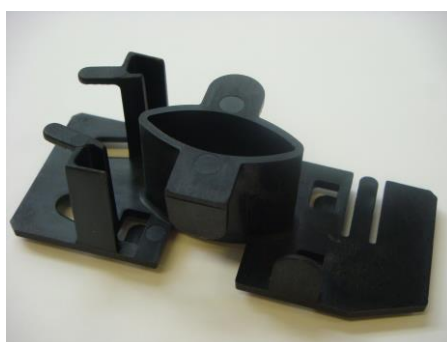
Additional Items Required:	Prysmian Part No.:
Heatshrink Splice Protectors (pk 12)	XPESC00050
Heatshrink Splice Protectors (pk 50)	XPESC00053
Optional Items Available:	Prysmian Part No.:
ETSI Mounting Bracket Kit	XKTSC00171
Crimp Splice Holders (pk 10)	XSRSC00358
Rear Mounting Bracket Kit	XSRSC00361
Crimp Splice Protectors (pk 12)	XKTSC00020
SRS - ARS Cable Anchor Kit	XSRSC00360
Tools:	Pozi Drive Screwdrivers: No.2 / No.3
	Flush Cutting Tool 1A – BT Item Code 07680
	Tube Cutting Tool

Components Parts (pictures not to scale)

1. Splice Only Shelf Assembly QTY: 1



2. Patch Cord Bend Manager QTY: A/R

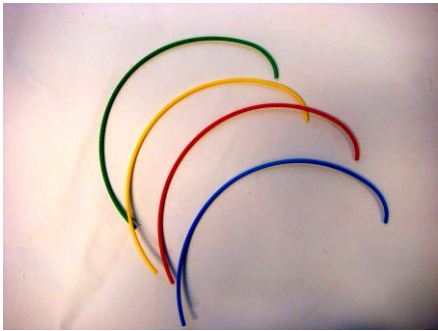
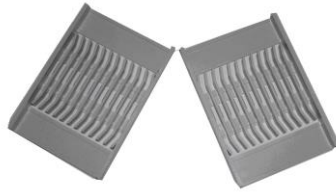


3. Tube Installation Tool QTY:1



INSTALLATION INSTRUCTION

Components Parts (pictures not to scale) Continued

4. Bend Limiting Tube
QTY: 4

5. Splice Protector bays
QTY: 4

6. Fastenings and Fixings
QTY:

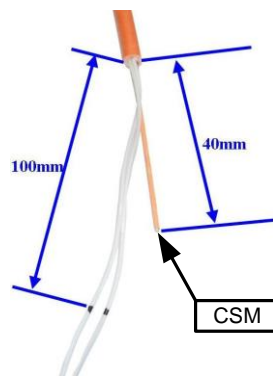
M6 Cage Nuts	4
M6 x 12mm Pozi Pan Hd SEMS	4
ARS Kit	2
Cable Ties (2.5 x 90mm)	
Cable Ties (3.5 x 290mm)	

Cable Prep and Installation

Step 1

Preparation Step

- Prior to installation ensure that there is a minimum of 3m of cable spare for installation, termination and storage purposes.
- Make a Butt Mark 2m from end of cable.
- Remove the outer sheath back to the Butt mark and remove all tapes and bindings.
- Remove all unwanted cable elements.

Step 2


- Cut the Central Strength Member (CSM) to a length of 40mm from the cable butt.
- Make a mark on the exposed cable elements 100mm from the cable butt.
- Remove the protective tube/sheath from the elements back to this mark to expose the fibres.

Step 3


- Ensure that the CSM is located in the centre boss of the ARS and the cable butt is approximately in line with the end of the cable support cradle of the ARS.
- Fit the M4 x 10mm screw to secure the CSM.

INSTALLATION INSTRUCTION

Step 4

Ensure the cable ties are secured in this position with the blocks on top.



- Secure the cable butt to the ARS using 2, 3.5 x 290mm cable ties.
- Remove excess cable tie length with a Flush Cutting Tool 1A.
- *The cable ties must be installed with the large end of the cable tie in the position as illustrated above.*

Step 5



- Thread the fibres from cable element No.1 into the BLUE Bend Limiting Tube.
- Thread the fibres from cable element No.2 into the RED Bend Limiting Tube.
- The end of each tube should be approximately 30mm from the end of the ARS body.

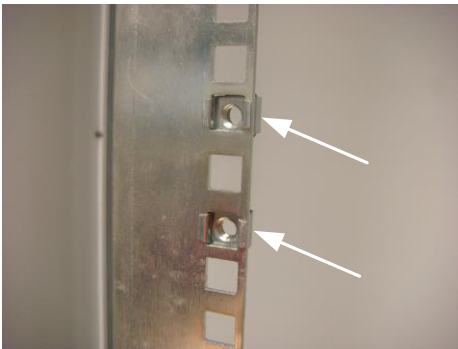
Step 6



Ensure the cable ties are secured in this position with the blocks on top.

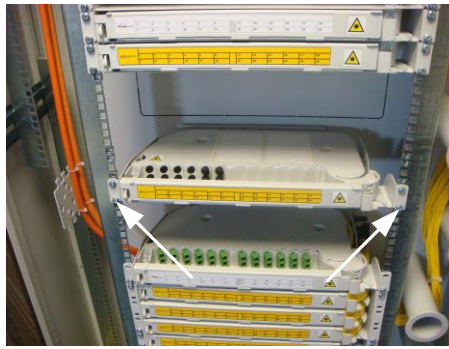
- Thread two, 2.5mm x 90mm cable ties through the 4 holes in the body of the ARS and secure the BUE and RED tubes to the ARS body.
- *For cable to cable/blown fibre these seven steps need to be completed on both cables*

Step 7



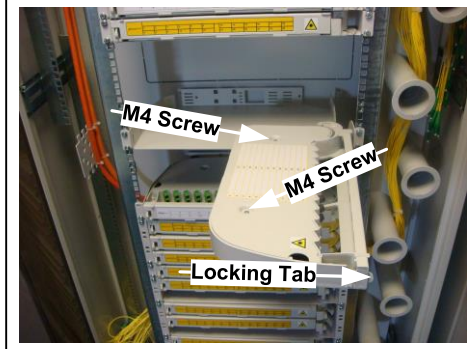
- To install the shelf into the rack first of all locate a suitable position within the rack.
- Insert the cage nuts from the installation kit in both sides of the rack to the back of the rail.
- Check the position of them by offering up the shelf to check that the spacing is correct.

Step 8



- Fix the shelf into position using the 4 M6 x 12mm Pozi Pan Hd SEMS screws. Use a No.3 Pozi Drive Screwdriver.
- Ensure that the shelf is securely attached by tightening the screws so that the serrated washer engages with the shelf metalwork.
- *If fitting into an ETSI rack fit: ETSI Mounting Bracket Kit – XKTSC00171 by attaching the brackets to the 19" fixing holes. Tighten 2 self tapping screws each side using a No.3 Pozi Drive Screwdriver.*

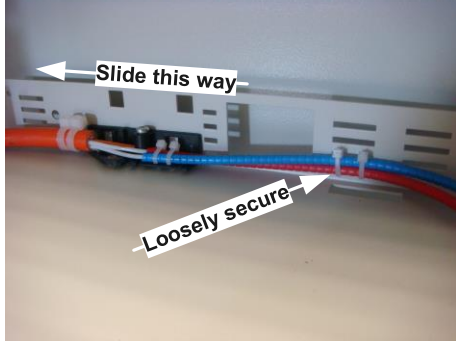
Step 9



- On the left of the shelf you will see a locking tab. Push this to right and then pull.
- This will allow the shelf to swing out. Open the shelf so that it swings out approximately 90°.
- Remove the 2x M4 screws that retain the cover on the shelf by using a No.2 Pozi Drive Screwdriver.

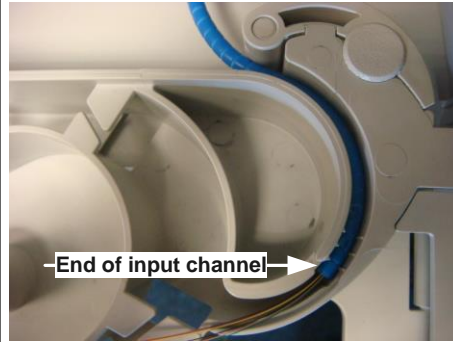
INSTALLATION INSTRUCTION

Step 10



- This installation step starts showing you have to start loading fibre onto the shelf.
- Attach the ARS to the back of the shelf. To do this push it into the square holes and slide to the left.
- Insert 2x cable ties (2.5 x 90mm) into the back shelf to secure the bend limiting tube in place. Only lightly secure them. Do not pull them tight as the tubes need to be free moving until they are locked into the plastic shelf.
- *If the ARS needs to be removed, then place a flat bladed screw driver behind the release tab and push the ARS assembly to the right.*

Step 11



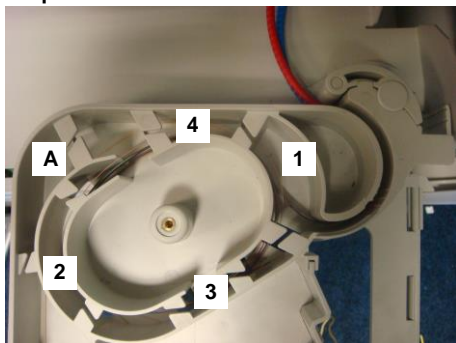
- Push the blue tube in first. Locate it so that the end of the bend limiting tube is at the end of the input channel.
- You will see some serrations which lock into the grooves on the bend limiting tube. Align these and gently push with your fingers until the tube is held in place.

Step 12



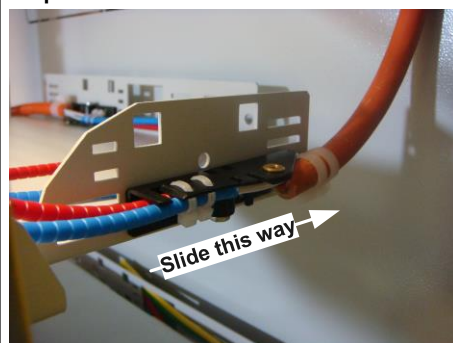
- Use the tube installation tool to push the blue tube into position. Do this in smooth even push and make sure that the tube is pushed all the way in.
- Repeat step 11 and step 12 for other bend limiting tube.
- Tighten the cable ties from step 10.
- Suggested colour sequence is as follow:
Blue
Red
Green
Yellow

Step 13



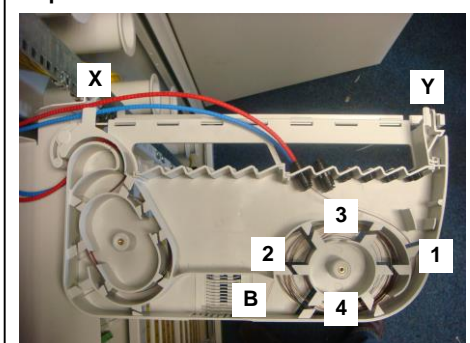
- Route the fibres through point 1 making sure to follow the arrow on the moulding.
- Follow the numbered route.
- When you are ready, route your fibres for splicing through point 'A'.

Step 14



- Prepare the cable using steps 1 to 6.
- Attach the ARS to the side of the shelf. To do this push it into the square holes and slide to the right. *Note: this is fitted upside down to ensure that the bend limiting tube enter the shelf the correct way.*
- Allow the bend limiting tube to poke out of the front of the shelf.
- *If the ARS needs to be removed, then place a flat bladed screw driver behind the release tab and push the ARS assembly to the left.*
- *If you are using blown fibre cable refer to 'Appendix A'.*

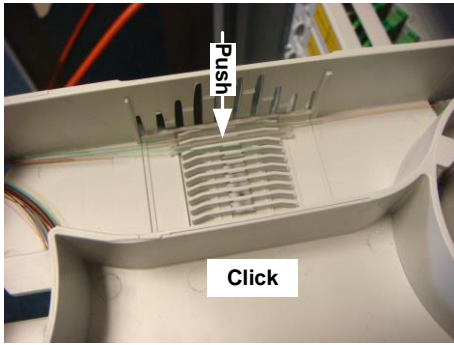
Step 15



- Flip down the front cover by releasing tabs 'X' and 'Y' at either end of the front cover. Route the tubes to the patch panel.
- Feed the fibres through the bulkhead connector being careful that they do not snag as they are inserted.
- Push the bend limiting tube into the bulkhead connector. Use the four positions nearest the hinge.
- Route the fibres into the storage area following the numbered route.
- When you are ready route your fibres ready for splicing through point 'B'.
- *A maximum of 4 bend limiting tubes can be taken from 1 ARS.*

INSTALLATION INSTRUCTION

Step 16



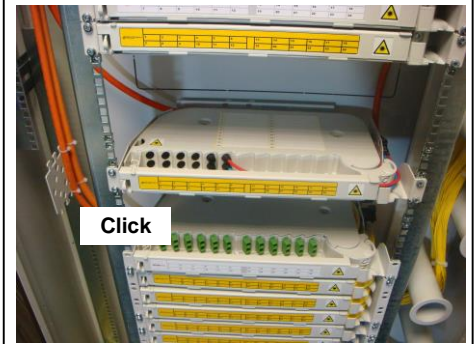
- Hook the nearest side of the splice bay underneath the small ridges on the shelf base.
- Firmly and evenly push the splice bay down so that it clicks into position. Ensure that the splice bay is firmly locked in position. It should sit flush with the floor of the shelf if it has been installed correctly.
- Splice your selected fibres together and then push them into the bay as shown.
- 12 splices can be held in each tray.
- Extra splice bays are mounted on top in the same way.
- *To release a splice bay bend the the tabs on the back of the shelf base.*

Step 17



- Replace the cover making sure that it sits flat and is recessed correctly. Replace the 2 M4 screws which were removed in Step 5. These screws retain the cover on the shelf. Use a No.2 Pozzi Drive Screwdriver. Do not over tighten.

Step 18

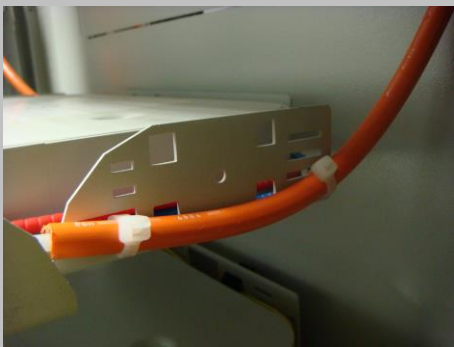


- Push the shelf back into the closed position. Push this fully back into the shelf a click will be heard when the locking tab has been engaged on the metalwork.

Note. When closing the module lift slightly before pushing back into place.

- Installation is now complete.

Appendix A Step 1



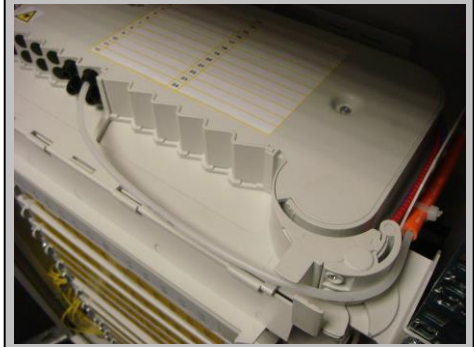
- Measure the distance between the cable anchor point and the bulkhead connector you are using. Add 50mm to the length.
- Using 2x (3.5 x 290mm) cable ties secure the cable to shelf using the horizontal slots.

Appendix A Step 2



- Route the tube around the front of the shelf.

Appendix A Step 3



- Trim the tube to length and insert it into the bulkhead connector.
- Return to step 15.

INSTALLATION INSTRUCTION

NOTES:

Please note this installation guide has been written showing loose tube multi fibre. The steps within this document are applicable to all other supported cable types. For blown fibre installation secure the cable to the shelf using cable ties and route the tubes directly onto the shelf or to the bulkhead connectors.

See Prysmian Datasheet: RM018-01 SRS3000 1U Splice Only Shelf for more details.

©PRYSMIAN 2014. All Rights Reserved.

The information contained within this document must not be copied, reprinted or reproduced in any form, either wholly or in part, without the written consent of Prysmian. The information is believed correct at the time of issue. Prysmian reserves the right to amend this specification without notice. This specification is not contractually valid unless specifically authorised by Prysmian.

PRYSMIAN HELPLINE: + 44 (0) 2380 608787
connectivity.helpline@prysmian.com

Prysmian Telecom Cables & Systems UK Ltd, Chickenhall Lane, Bishopstoke, Hants SO50 6YU, UK
Technical Enquiries +44 (0) 2380 608760 Fax Number +44 (0) 2380 608769