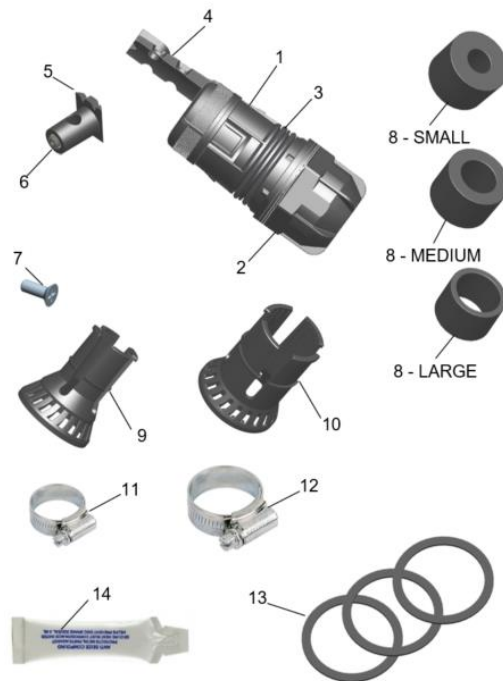


**MECH SEAL – CIRCULAR COF 200, COF 209, COF 730 & COF 950
INSTALLATION GUIDE**

KIT CONTENTS

ITEM No.:	DESCRIPTION	QTY
1	MEDIUM BODY SEALING GLAND	x1
2	MEDIUM NUT	x1
3	O-RING BS124 NITRILE	x2
4	STRENGTH MEMBER RETENTION BRACKET	x1
5	STRENGTH MEMBER RETENTION BOSS	x1
6	GRUB SCREW	x1
7	M4 x 12mm CSK POZI PAN SCREW	x1
8	SINGLE WAY CABLE SEAL	x1
9	ANTI-TORSION CLAMP – SMALL	x1
10	ANTI-TORSION CLAMP – LARGE	x1
11	JUBILEE CLIP 8-16mm – SMALL	x1
12	JUBILEE CLIP 16-27mm – LARGE	x1
13	SPACERS	x3
14	GREASE SACHET	x1



**MECH SEAL – CIRCULAR COF 200, COF 209, COF 730 & COF 950
INSTALLATION GUIDE**

Step 1

REMOVE PORT BLANK FROM BASE BY FULLY SQUEEZING TOGETHER THE TABS FROM INSIDE THE BASE.

NOTE: YOU MAY NEED TO ROTATE THE BLANK IN THE PORT TO SQUEEZE THE TABS.

USING YOUR OTHER HAND OR PLIERS, HOLD THE CENTRAL RIB AND FIRMLY PULL UNTIL THE PORT BLANK IS RELEASED.



**MECH SEAL – CIRCULAR COF 200, COF 209, COF 730 & COF 950
INSTALLATION GUIDE**

Step 2

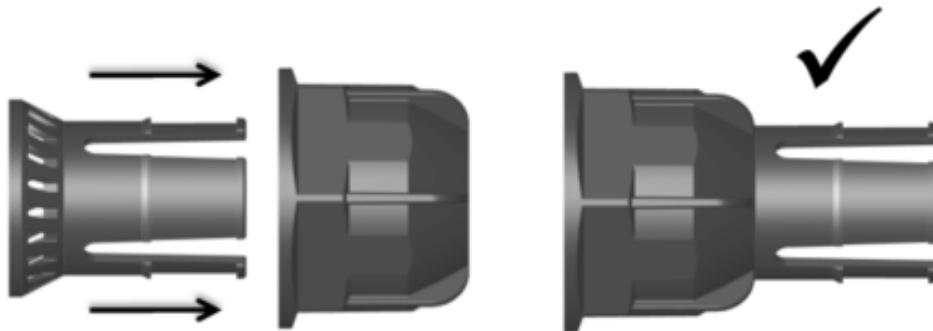
IDENTIFY THE CABLE DIAMETER AND USING THE TABLE BELOW SELECT THE CORRECT CABLE SEAL, JUBILEE CLIP, ANTI-TORSION CLAMP AND THE NUMBER OF SPACERS REQUIRED.

CABLE Ø	SEAL SIZE (8)	CABLE RANGE	CABLE TYPE	SPACERS (13)	ANTI-TORSION SIZE & JUBILEE CLIP SIZE
7mm - 10.9mm	SMALL SEAL XJTSG01774	7.2- 7.7mm	COF 260 UP TO 144F	1	SMALL (10 & 12)
		9- 10.2mm	COF 209	2	SMALL (10 & 12)
		10- 10.9mm	COF 950 144F ONLY	3	SMALL (10 & 12)
11mm - 16.4mm	MEDIUM SEAL XJTSG01773	12- 13.09mm	COF 200 UP TO 144F PRYSMIAN & CORNING	1	SMALL (10 & 12)
		13.1-14.09mm	COF 200 UP TO 144F STERLITE	2	SMALL (10 & 12)
		14.1- 16.4mm	COF 200 ABOVE 144F	3	LARGE (11 & 13)
16.5mm - 20mm	LARGE SEAL XJTSG01557	16.5 - 17.5mm	COF 730	1	LARGE (11 & 13)

**MECH SEAL – CIRCULAR COF 200, COF 209, COF 730 & COF 950
INSTALLATION GUIDE**

Step 3

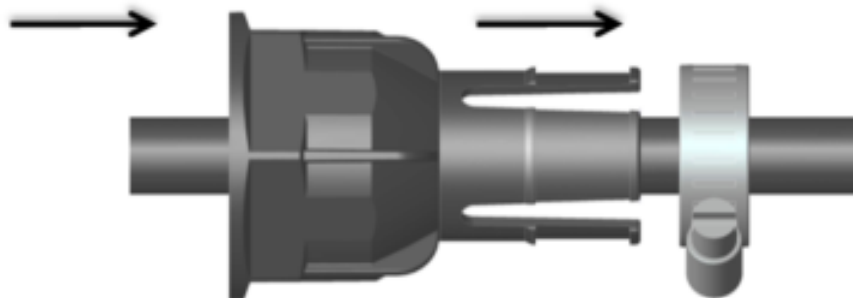
REMOVE THE MEDIUM NUT (2) FROM THE GLAND ASSEMBLY AND INSERT THE CORRECT ANTI-TORSION CLAMP (9 OR 10) AS SHOWN BELOW.



**MECH SEAL – CIRCULAR COF 200, COF 209, COF 730 & COF 950
INSTALLATION GUIDE**

Step 4

SLIDE THE JUBILEE CLIP (11 OR 12) OVER THE CABLE END FIRST. THEN SLIDE THE MEDIUM NUT (2) AND ANTI-TORSION CLAMP (9 OR 10) OVER THE CABLE END (FITTED TOGETHER).



**MECH SEAL – CIRCULAR COF 200, COF 209, COF 730 & COF 950
INSTALLATION GUIDE**

Step 5

INSERT THE SEAL (8) INTO THE GLAND ASSEMBLY (1) AS SHOWN.



**MECH SEAL – CIRCULAR COF 200, COF 209, COF 730 & COF 950
INSTALLATION GUIDE**

Step 6

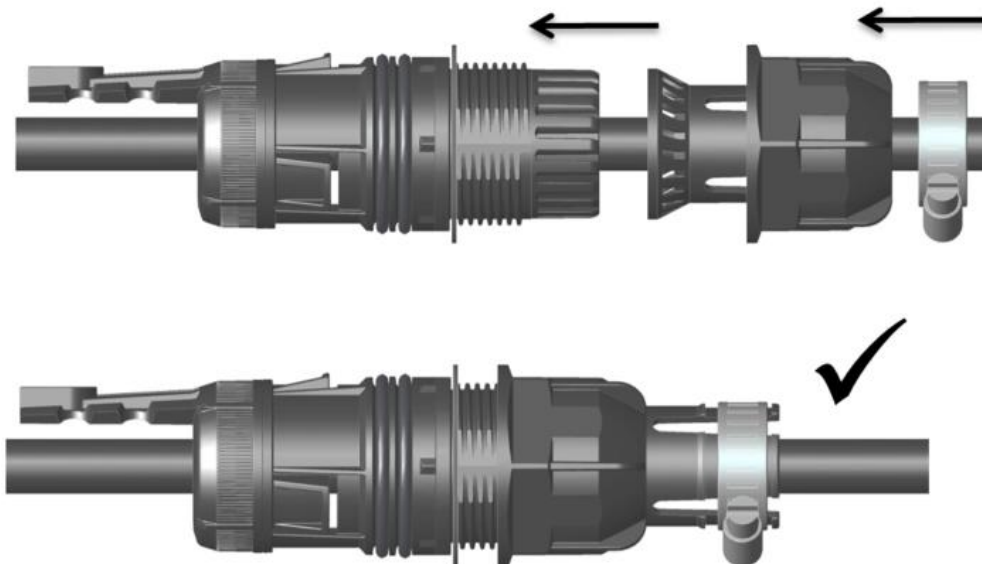
FIT THE REQUIRED NUMBER OF SPACERS (13) OVER THE THREAD OF THE GLAND BODY ASSEMBLY (1).



**MECH SEAL – CIRCULAR COF 200, COF 209, COF 730 & COF 950
INSTALLATION GUIDE**

Step 7

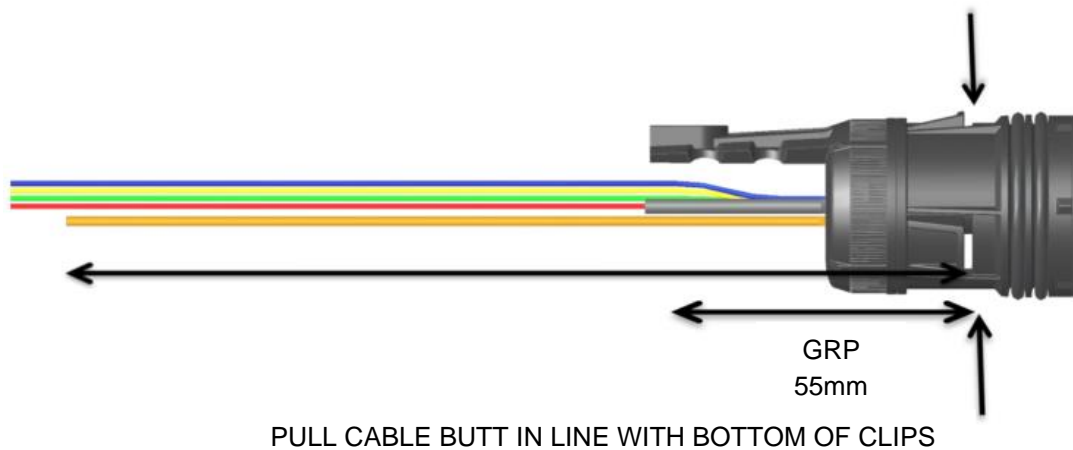
SLIDE THE GLAND ASSEMBLY (1) ONTO THE CABLE AND PUSH THROUGH APPROXIMATELY 2.2m OF CABLE. LOOSELY TIGHTEN THE MEDIUM NUT (2) BACK ONTO THE GLAND BODY AND LOOSELY TIGHTEN JUBILEE CLIP (11 OR 12) ONTO THE ANTI-TORSION CLAMP (9 OR 10).



**MECH SEAL – CIRCULAR COF 200, COF 209, COF 730 & COF 950
INSTALLATION GUIDE**

Step 8

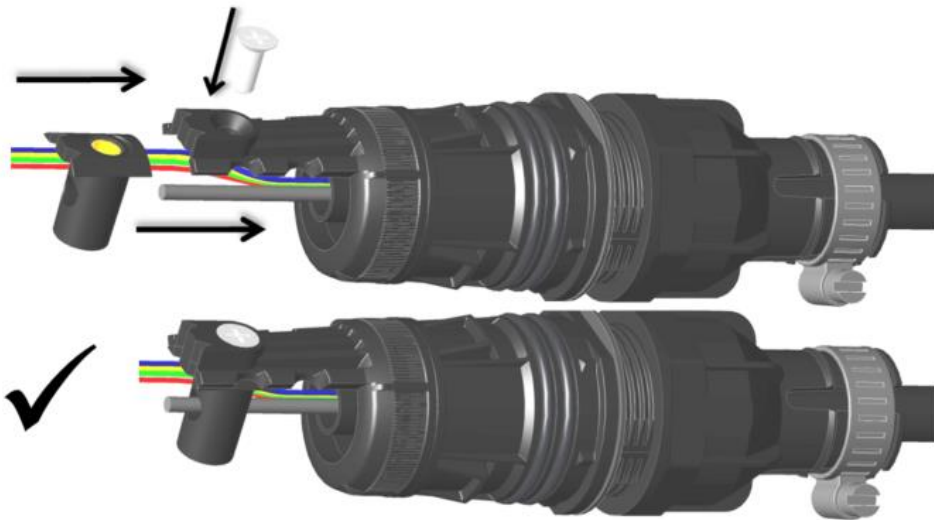
STRIP CABLE BACK 2m (S/M TM NODE) or 3m (L/XL TM NODE) EXPOSING THE ELEMENTS AND GRP. MEASURE FROM THE CABLE BUTT AND CUT THE GRP TO 55mm. APPLY GREASE (14) ALONG CABLE SHEATH FROM THE BUTT BACK 200mm & PULL CABLE BACK UNTIL BUTT ENDS UP IN POSITION SHOWN.



**MECH SEAL – CIRCULAR COF 200, COF 209, COF 730 & COF 950
INSTALLATION GUIDE**

Step 9

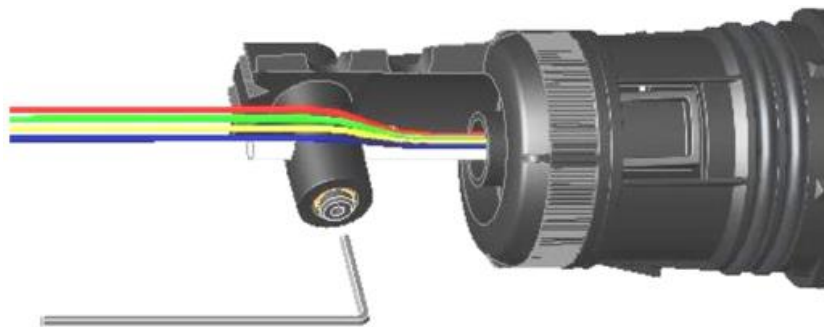
SLIDE RETENTION BOSS (5) OVER GRP AND LINE UP THE SCREW HOLE. SECURE RETENTION BOSS (5) TO THE RETENTION BRACKET (4) USING SCREW (7). ENSURE THE GROOVES LINE UP AT THE TOP.



**MECH SEAL – CIRCULAR COF 200, COF 209, COF 730 & COF 950
INSTALLATION GUIDE**

Step 10

TIGHTEN THE GRUB SCREW (6) ONTO THE GRP USING A 2MM ALLEN KEY. DO NOT OVER TIGHTEN.

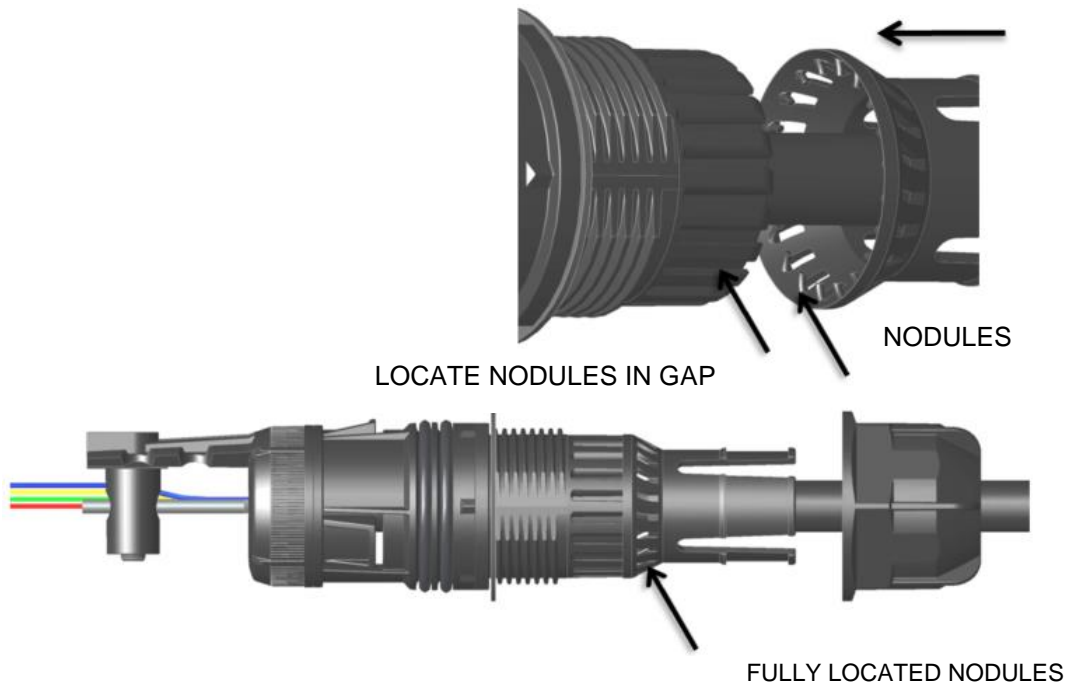


**MECH SEAL – CIRCULAR COF 200, COF 209, COF 730 & COF 950
INSTALLATION GUIDE**

Step 11

ENSURE THE SINGLE SEAL (8) IS FULLY INSERTED INTO GLAND BODY (1). LOCATE THE ANTI-TORSION CLAMP (9 OR 10) NODULES AND PUSH THE CLAMP ONTO THE SEAL SO THE ANTI-TORSION CLAMP CANNOT ROTATE.

**NOTE: DO NOT FORCEFULLY ROTATE THE CLAMP.
IF THE ANTI-TORSION CLAMP ROTATES, IT HAS NOT BEEN
LOCATED CORRECTLY.**



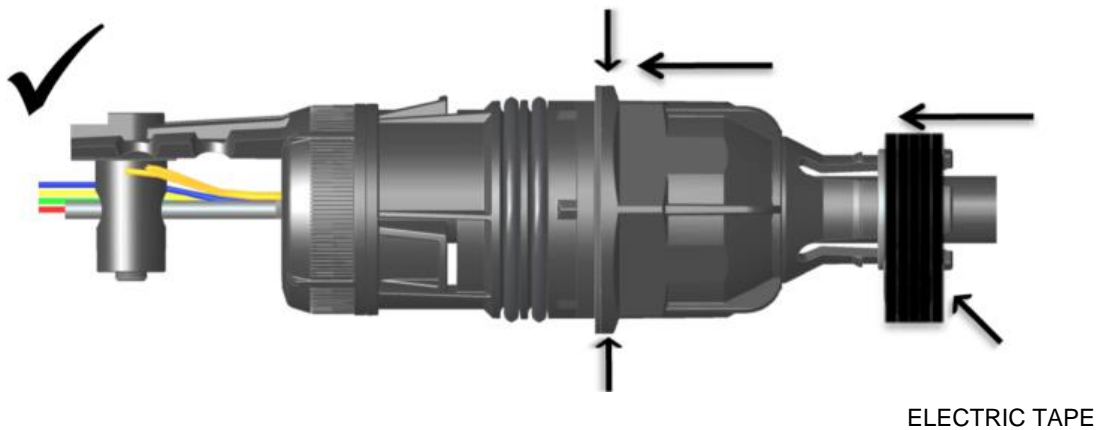
**MECH SEAL – CIRCULAR COF 200, COF 209, COF 730 & COF 950
INSTALLATION GUIDE**

Step 12

SLIDE THE MEDIUM NUT (2) OVER THE ANTI-TORSION CLAMP AND SCREW THE NUT DOWN UNTIL ALL THE SURFACES MATE. ENSURE THE ANTI-TORSION CLAMP STAYS LOCATED BY PUSHING DOWN ON THE END WHILST IN POSITION. USING JUBLIEE CLIP (11 OR 12), SLIDE IT OVER THE END OF CLAMP AND TIGHTEN USING SCREWDRIVER.

NOTE: DO NOT OVER TIGHTEN ON CABLE.

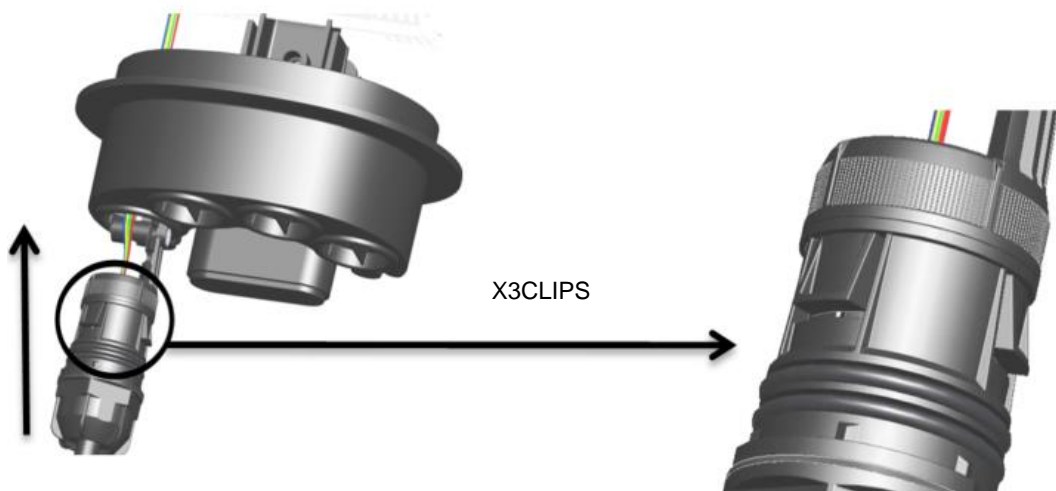
APPLY 2 TURNS OF ELECTRICAL TAPE OVER THE JUBILEE CLIP.



**MECH SEAL – CIRCULAR COF 200, COF 209, COF 730 & COF 950
INSTALLATION GUIDE**

Step 13

PUSH GLAND (1) INTO S/M/L/XL TM NODE BASE. ONCE RESISTANCE ON O-RING IS FELT, CONTINUE PUSHING WITH A TWISTING ACTION UNTIL AN AUDIBLE CLICK IS HEARD. VISUALLY CHECK FROM INSIDE THE BASE ALL 3 CLIPS ARE SECURED INTO BASE.



**MECH SEAL – CIRCULAR COF 200, COF 209, COF 730 & COF 950
INSTALLATION GUIDE**

Step 14

INSERT THE CABLE TUBE INTO THE MANIFOLD RESTRAINT AND STRIP THE TUBE AT THE INDICATED POSITION, AS SHOWN. ROUTE ELEMENTS AND FIBRES AS PER THE CLOSURE INSTALLATION INSTRUCTIONS.



Copyright Prysmian Group - 2023 You may not copy, reprint, or reproduce in any form the content, either wholly or in part, of this Installation Guide, without the written permission of the copyright owner. Specifications are for product as supplied by Prysmian Group: any modification or alteration afterwards of product may give different result. The information is believed to be correct at the time of issue. Prysmian Group reserves the right to amend the information within this Installation Guide without prior notice. This Installation Guide may include inaccuracies, omissions of content and of information and is not contractually valid unless specifically authorised by Prysmian Group. Property of Prysmian Group UK - Uncontrolled when printed Prysmian Cables & Systems Limited, Chickenhall Lane, Eastleigh, Hampshire, SO50 6YU, United Kingdom.

PRYSMIAN HELPLINE: + 44 (0) 7816191633
connectivity.helpline@prysmiangroup.com